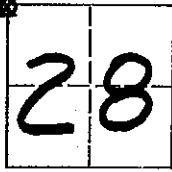


# CORNER RECORD

COUNTY OF MADERA    TOWNSHIP    **6**    SOUTH,    RANGE    **21**    EAST,    M.D.B.&M.    CALIFORNIA

CORNER TYPE:    GOV'T. CORNER     MEANDER     RANCHO     CONTROL     OTHER

CORNER IDENTIFICATION - DATE OF VISIT:    **June**    19 **62**



**NORTHWEST CORNER OF SECTION 28, 6/21.**

CORNER - LEFT AS FOUND     FOUND AND TAGGED     REESTABLISHED OBLITERATED CORNER     REBUILT

PHYSICAL DESCRIPTION OF CORNER FOUND; EVIDENCE AND METHOD USED TO IDENTIFY OR REESTABLISH

**Found remains of original bearing trees & reset corner from same. Also found wood stake in rock mound - N 16°17'40"E , 173.21 feet from corner. NOT ACCEPTED**

PHYSICAL DESCRIPTION OF MONUMENTS REBUILT OR PERPETUATED

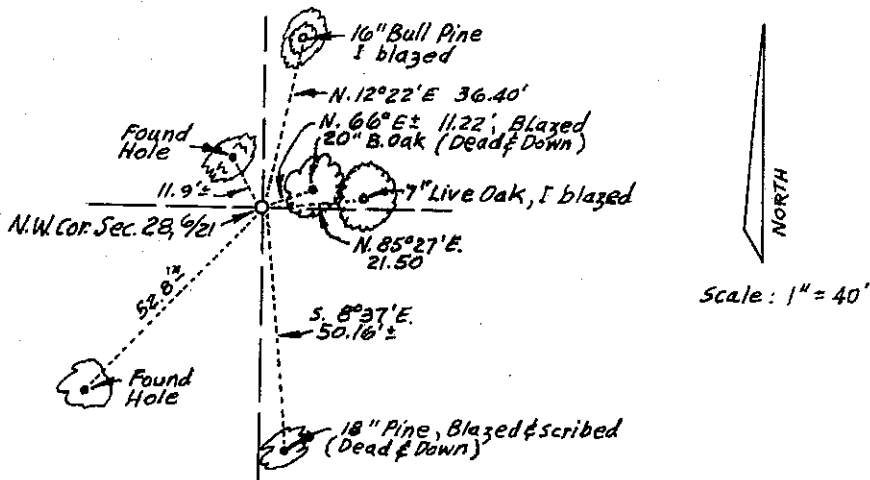
**Set 2" Iron Pipe with Brass Cap "LS 2737".**

CALIFORNIA COORDINATE SYSTEM ORDER:    FIRST     SECOND     THIRD

STATIONS USED:    NGS (USC & GS)     STATE     COUNTY     OTHER     STATION \_\_\_\_\_ STATION \_\_\_\_\_

ZONE \_\_\_\_\_ ELEVATION \_\_\_\_\_ NORTHINGS (Y) \_\_\_\_\_ EASTINGS (X) \_\_\_\_\_

SKETCH: (INCLUDE REFERENCE TIE OR WITNESS POINTS, REMARKS AND TOPO OF AREA)



**Note: Copied from Record of Survey for F. Carl Hirdler, Jr. Surveyed by W.O. Gentry, LS 2737.**

VOL 9 PAGE 112

**SURVEYOR'S CERTIFICATE**

THIS CORNER RECORD WAS PREPARED BY ME OR UNDER MY DIRECTION IN CONFORMANCE WITH THE LAND SURVEYOR'S ACT ON \_\_\_\_\_ 19\_\_\_\_.

SIGNED: \_\_\_\_\_

L.S. or R.C.E. No: \_\_\_\_\_

SEAL

**COUNTY SURVEYOR'S CERTIFICATE**

THE CORNER RECORD WAS RECEIVED \_\_\_\_\_ 19\_\_\_\_

AND EXAMINED AND FILED \_\_\_\_\_ 19\_\_\_\_.

BY: \_\_\_\_\_

TITLE: \_\_\_\_\_

DOCUMENT No: \_\_\_\_\_

STATEMENT ON BACK OF SHEET:    YES     NO