

CORNER RECORD

COUNTY OF MADERA T. 6S R. T.E. M.D.B. & MERIDIAN CALIF.

CORNER TYPE: GOV'T. CORNER () MEANDER () RANCHO () CONTROL () OTHER ()

CORNER IDENTIFICATION --- DATE OF VISIT July 7, 1976 1976



5/4 Cor. Sec. 26/6/21

CORNER -- LEFT AS FOUND () FOUND & TAGGED () REESTABLISHED OBLITERATED CORNER ()
REBUILT ()

PHYSICAL DESCRIPTION OF CORNER FOUND: EVIDENCE & METHOD USED TO IDENTIFY OR REESTABLISH:

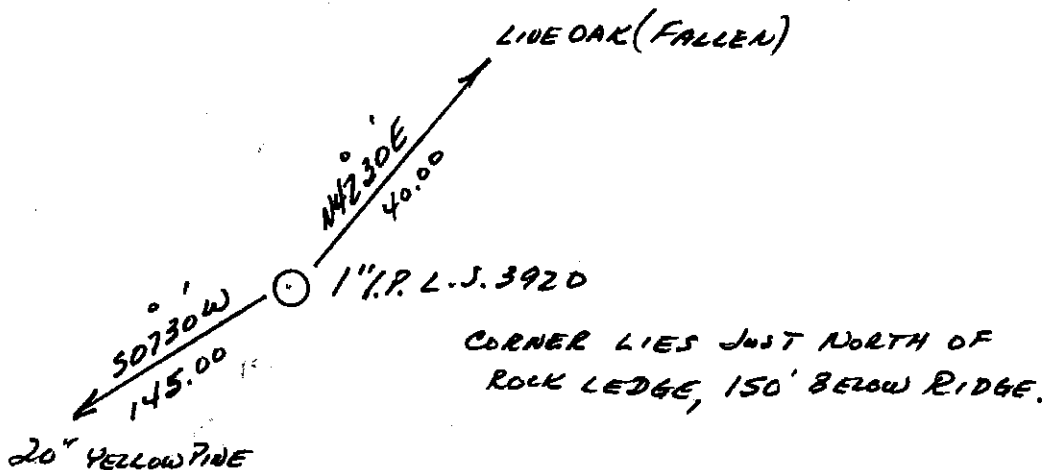
1" I.P. TAGGED L.S. 2920 FOR 5/4 COR. 26/6/21

PHYSICAL DESCRIPTION OF MONUMENTS REBUILT OR PERPETUATED:

(N. APP.)

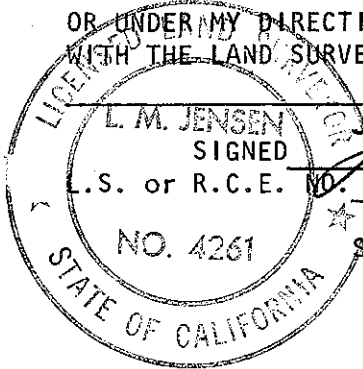
CALIFORNIA COORDINATE SYSTEM ORDER: FIRST () SECOND () THIRD ()
STATIONS USED: NOS (USC & GS) () STATE () COUNTY () OTHER () STATION _____
STATION _____ ZONE _____ ELEVATION _____ NORTHINGS (Y) _____
EASTINGS (X) _____

SKETCH: (INCLUDE REFERENCE TIE OR WITNESS POINTS, REMARKS AND TOPO OF AREA)



SURVEYOR'S CERTIFICATE

THIS CORNER RECORD WAS PREPARED BY ME OR UNDER MY DIRECTION IN CONFORMANCE WITH THE LAND SURVEYORS ACT ON 15 Aug. 1976



L.M. Jensen
L.S. or R.C.E. NO. L.S. 4261

COUNTY SURVEYOR'S CERTIFICATE

THE CORNER RECORD WAS RECEIVED 8-19-76 & EXAMINED
& FILED AUG 19 1976
BY: A. Grote
TITLE: County Engineer

DOCUMENT NO. 76-24-6
STATEMENT ON BACK OF SHEET
YES () NO ()