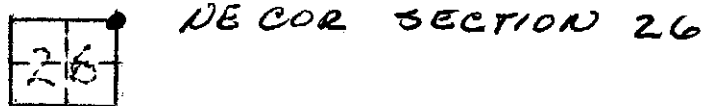


CORNER RECORD

COUNTY OF MADERA T. 6 S R. 21 E MERIDIAN CALIF.

CORNER TYPE: GOV'T. CORNER ( ) MEANDER ( ) RANCHO ( ) CONTROL ( ) OTHER ()

CORNER IDENTIFICATION --- DATE OF VISIT July 7 19 76



CORNER -- LEFT AS FOUND () FOUND & TAGGED ( ) REESTABLISHED OBLITERATED CORNER ( ) REBUILT ( )

PHYSICAL DESCRIPTION OF CORNER FOUND: EVIDENCE & METHOD USED TO IDENTIFY OR REESTABLISH:

1 1/2" BRASS CAP STAMPED A.W. MILLER R.E. 1674

PHYSICAL DESCRIPTION OF MONUMENTS REBUILT OR PERPETUATED:

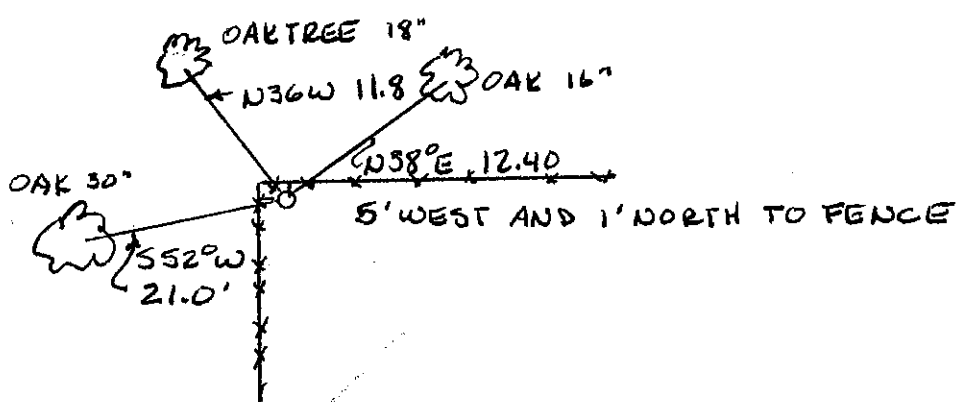
CALIFORNIA COORDINATE SYSTEM ORDER: FIRST ( ) SECOND ( ) THIRD ( )

STATIONS USED: NOS (USC & GS) ( ) STATE ( ) COUNTY ( ) OTHER ( ) STATION \_\_\_\_\_

STATION \_\_\_\_\_ ZONE \_\_\_\_\_ ELEVATION \_\_\_\_\_ NORTHINGS (Y) \_\_\_\_\_

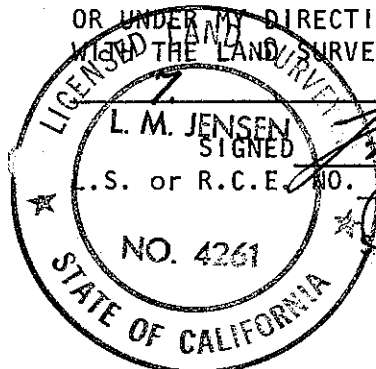
EASTINGS (X) \_\_\_\_\_

SKETCH: (INCLUDE REFERENCE TIE OR WITNESS POINTS, REMARKS AND TOPO OF AREA)



SURVEYOR'S CERTIFICATE

THIS CORNER RECORD WAS PREPARED BY ME OR UNDER MY DIRECTION IN CONFORMANCE WITH THE LAND SURVEYORS ACT ON July 7 19 76



COUNTY SURVEYOR'S CERTIFICATE

THE CORNER RECORD WAS RECEIVED 8.19.76 & EXAMINED

FILED AUG 19 1976  
BY: A. Grote  
TITLE: County Engineer

DOCUMENT NO. 76.24.8  
STATEMENT ON BACK OF SHEET  
YES ( ) NO ()