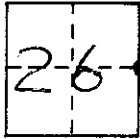


# CORNER RECORD

COUNTY OF MADERA T. 6S R. 21E M.D.B. MERIDIAN CALIFORNIA  
 CORNER TYPE: GOV'T. CORNER  MEANDER  RANCHO  CONTROL  OTHER   
 CORNER IDENTIFICATION - DATE OF VISIT 7-9 1990



E 1/4 CORNER SECTION 26 6/21

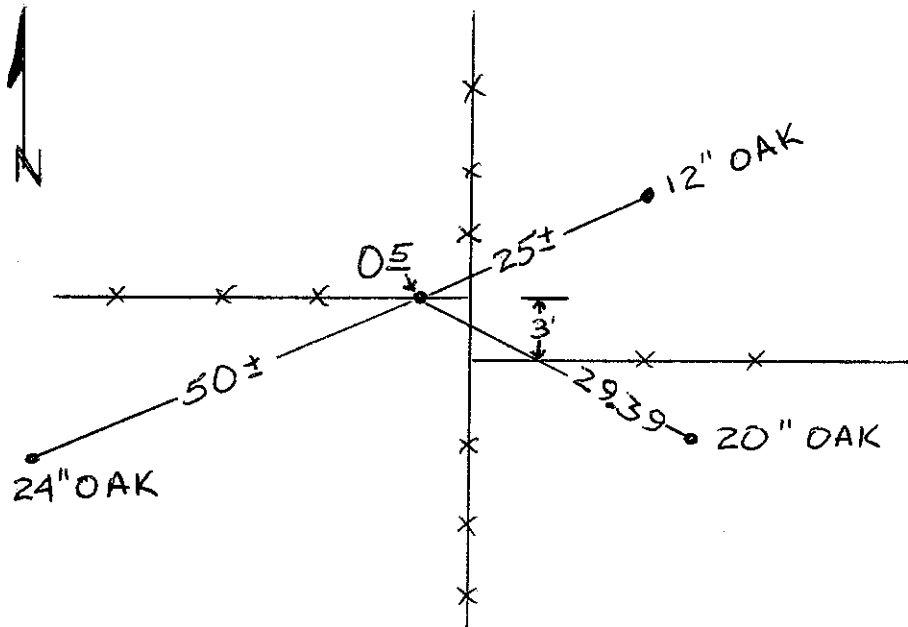
CORNER - LEFT AS FOUND  FOUND AND TAGGED  REESTABLISHED OBLITERATED CORNER  REBUILT

PHYSICAL DESCRIPTION OF CORNER FOUND; EVIDENCE AND METHOD USED TO IDENTIFY OR REESTABLISH  
FD 1 1/4" I.P. FLUSH RCE 5982 @ F.C. N, S, E & W ON SE SLOPE OF HILL  
FD FORREST SERVICE BEARING TREES; 2000' ± E of & MAD 41  
43 S.E. to FOREST SERVICE S.C. MARKER;  
25' ± ENE to 12" OAK; 50' ± WSW to 24" OAK; 29.39' SE to ORIGINAL  
BEARING TREE (20" OAK)

PHYSICAL DESCRIPTION OF MONUMENTS REBUILT OR PERPETUATED

CALIFORNIA COORDINATE SYSTEM ORDER: FIRST  SECOND  THIRD   
 STATIONS USED: NGS (USC & GS)  STATE  COUNTY  OTHER  STATION \_\_\_\_\_ STATION \_\_\_\_\_  
 ZONE \_\_\_\_\_ ELEVATION \_\_\_\_\_ NORTHINGS (Y) \_\_\_\_\_ EASTINGS (X) \_\_\_\_\_

SKETCH: (Include reference tie or witness points, remarks and topo of area)



N.T.S.

**SURVEYOR'S CERTIFICATE**  
 THIS CORNER RECORD WAS PREPARED BY ME OR UNDER MY DIRECTION IN CONFORMANCE WITH THE LAND SURVEYORS ACT ON 8-1- 1990 FOR THE STATE OF CALIFORNIA

SIGNED: [Signature]  
 L.S. or R.C.E. No.: 5396

SEAL

**COUNTY SURVEYOR'S CERTIFICATE**  
 THE CORNER RECORD WAS RECEIVED 12-28 1990 AND EXAMINED AND FILED 1-4 1991  
 BY: [Signature]  
 TITLE: Cty. Engr.

DOCUMENT No. \_\_\_\_\_

STATEMENT ON BACK OF SHEET

YES  NO