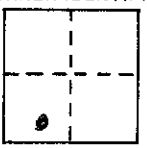


NAD27 ✓

CORNER RECORD

COUNTY OF Madera T. 67S R. 21E Mt. Diablo MERIDIAN CALIFORNIA
 CORNER TYPE: GOV'T. CORNER MEANDER RANCHO CONTROL OTHER
 CORNER IDENTIFICATION - DATE OF VISIT 4-19 1990



Sec. 25 6/21

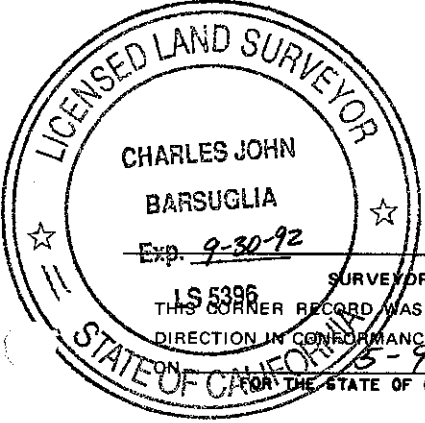
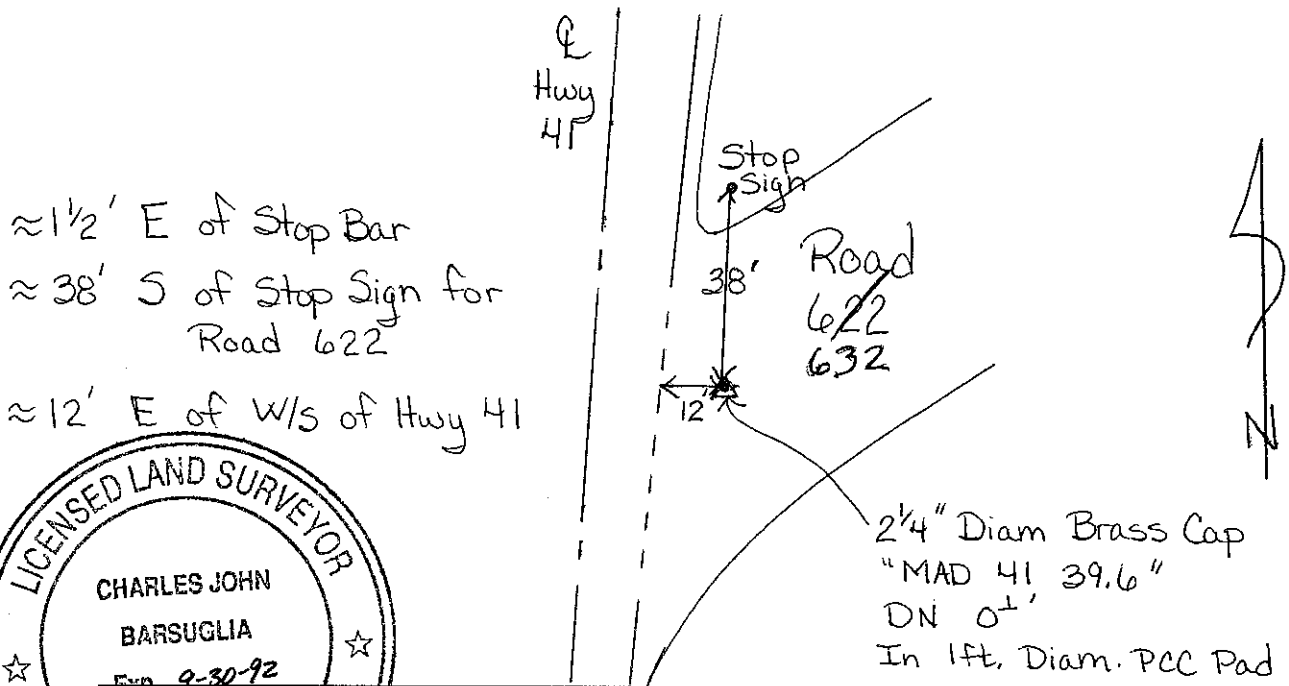
CORNER - LEFT AS FOUND FOUND AND TAGGED REESTABLISHED OBLITERATED CORNER REBUILT

PHYSICAL DESCRIPTION OF CORNER FOUND; EVIDENCE AND METHOD USED TO IDENTIFY OR REESTABLISH

PHYSICAL DESCRIPTION OF MONUMENTS REBUILT OR PERPETUATED (Set) GPS - MAD 41 39.6 -
Located in Road ~~622~~ at Hwy. 41
32

CALIFORNIA COORDINATE SYSTEM ORDER: FIRST SECOND THIRD
 STATIONS USED: NGS (USC & GS) STATE COUNTY OTHER STATION _____ STATION _____
 ZONE 3 ELEVATION 3025.57 NORTHINGS (Y) 743877.8225 EASTINGS (X) 1818071.1694

SKETCH: (Include reference tie or witness points, remarks and topo of area)



SURVEYOR'S CERTIFICATE
 THIS CORNER RECORD WAS PREPARED BY ME OR UNDER MY DIRECTION IN CONFORMANCE WITH THE LAND SURVEYORS ACT ON _____ 1990 FOR THE STATE OF CALIFORNIA
 SIGNED: Charles John Barsuglia
 L.S. or R.C.E. No.: 5396

COUNTY SURVEYOR'S CERTIFICATE
 THE CORNER RECORD WAS RECEIVED _____ 19____ AND EXAMINED AND FILED 6-18 1990.
 BY: Dave Stinson
 TITLE: Madera Co. Eng'r
 DOCUMENT No. _____
 STATEMENT ON BACK OF SHEET YES NO

SEAL