

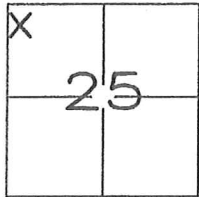
# CORNER RECORD

Document Number \_\_\_\_\_

City of UNINCORPORATED

County of MADERA, California

Brief Legal Description PARCEL 2 OF PARCEL MAP 379, RECORDED IN BOOK 16 OF MAPS AT PAGE 104, M.C.R.



T.6S., R.21E.

### CORNER TYPE

Government Corner  Control   
 Meander  Property   
 Rancho  Other

Date of Survey JULY 15, 2015

### COORDINATES(Optional)

N. \_\_\_\_\_  
 E. \_\_\_\_\_  
 Zone \_\_\_\_\_ NAD27  NAD83   
 NAD83 Epoch \_\_\_\_\_  
 Elev. \_\_\_\_\_  
 Vert. Datum: NGVD29  NADV88   
 Meas. Units: Metric  Imperial

Corner - Left as found  Found and tagged  Established  Reestablished  Rebuilt

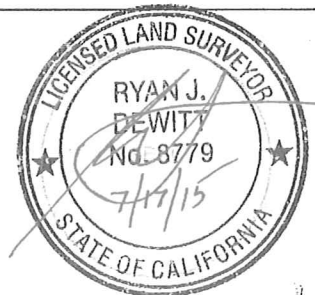
Identification and type of corner found: Evidence used to identify or procedure used to establish or reestablish the corner:  
**FOUND CONTROLLING ORIGINAL MONUMENTS, AND SET MISSING CORNER AT PRORATED POSITION. SEE PAGE 2.**

A description of the physical condition of the monument as found and as set or reset:  
**SET 5/8" REBAR, WITH PLASTIC CAP, MARKED "LS 8779", FLUSH WITH GROUND.**

### SURVEYOR'S STATEMENT

This Corner Record was prepared by me or under my direction in conformance with the Land Surveyor's Act on JULY 17, 2015.

Signed \_\_\_\_\_ P.L.S. or R.C.E. No.: PLS 8779



### COUNTY SURVEYOR'S STATEMENT

This Corner Record was received July 7, 2015 and examined and filed August 4, 2015.

Signed David McGlasson P.L.S. or R.C.E. No.: PLS 6968

Title Acting County Surveyor

County Surveyor's Comment \_\_\_\_\_



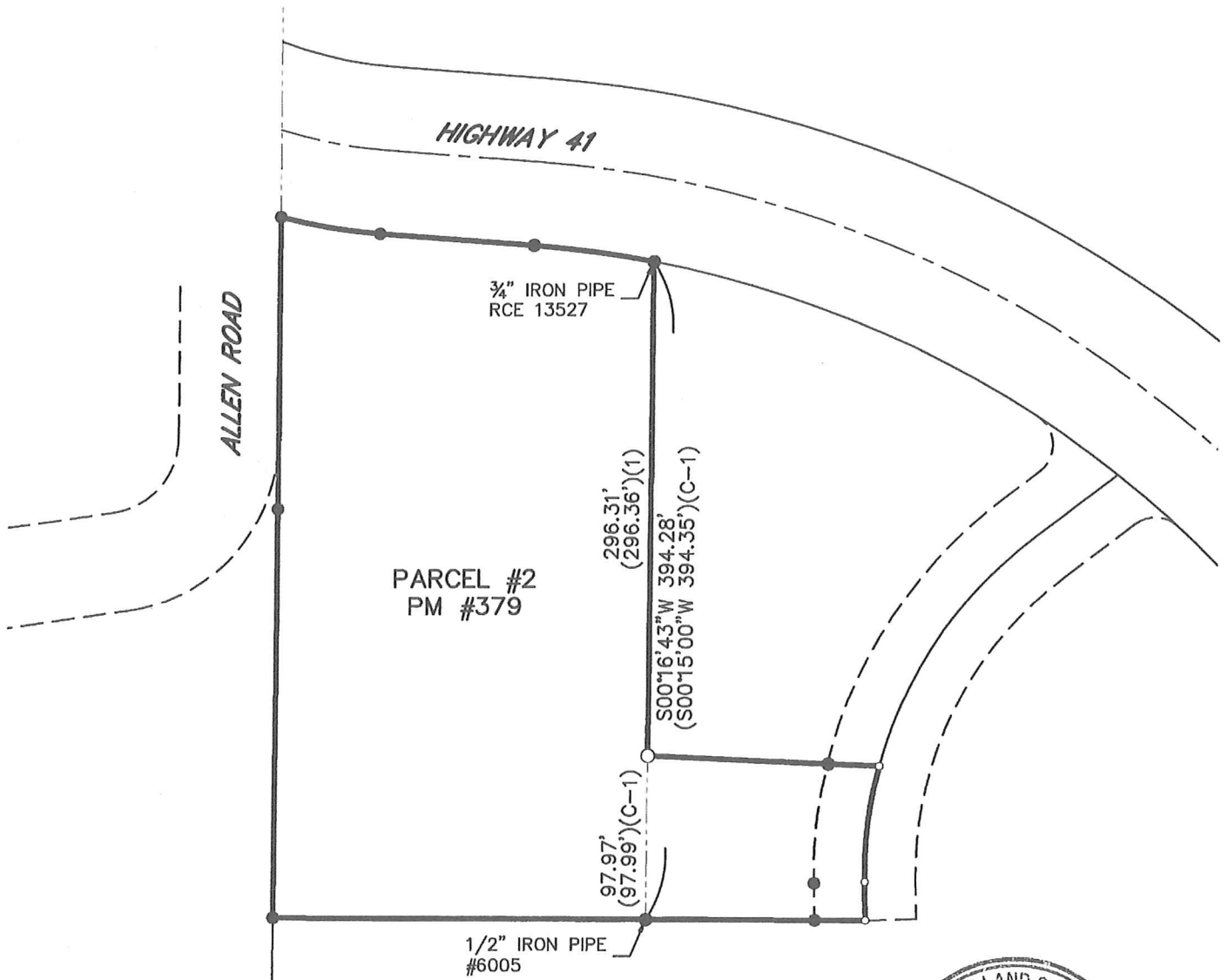


SCALE 1"=100'

# CORNER RECORD

OF

PARCEL 2 OF PARCEL MAP 379, RECORDED IN  
BOOK 16 OF MAPS AT PAGE 104, M.C.R.



## LEGEND

- SURVEY MONUMENT (AS NOTED)
- SET 5/8" REBAR, LS 8779
- ⊢ SET LINE POINT
- DIMENSION POINT (NOTHING FOUND OR SET)
- PROPERTY LINE
- ADJOINING PROPERTY LINE
- - - RIGHT-OF-WAY
- - - RIGHT-OF-WAY CENTERLINE
- - - NOT A DIVISION LINE
- (...)(1) BOOK 16 OF MAPS, PAGE 104, M.C.R.
- (C-1) CALCULATED PER (1)



JONES SNYDER & ASSOCIATES  
P.O. BOX 2292, OAKHURST, CA 93644  
(559)683-7661 WWW.JSSURVEYING.COM

DATE: 07/17/15  
JOB NO: 15-215

DWG FILE: 15-215MOS.dwg  
DRAWN BY: RJD