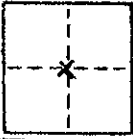


CORNER RECORD

COUNTY OF MADERA T. 9 R. 15 M.D.B. & MERIDIAN CALIFOR. 1975
 CORNER TYPE: GOVT. CORNER MEANDER RANCHO CONTROL OTHER
 CORNER IDENTIFICATION — DATE OF VISIT Nov 1975

*Therefore
Sec. 25*



S.W. COR. Lot 26 DAIRYLAND FARMS SUB. No. 1

CORNER — LEFT AS FOUND FOUND AND TAGGED REESTABLISHED OBLITERATED CORNER REBUILT

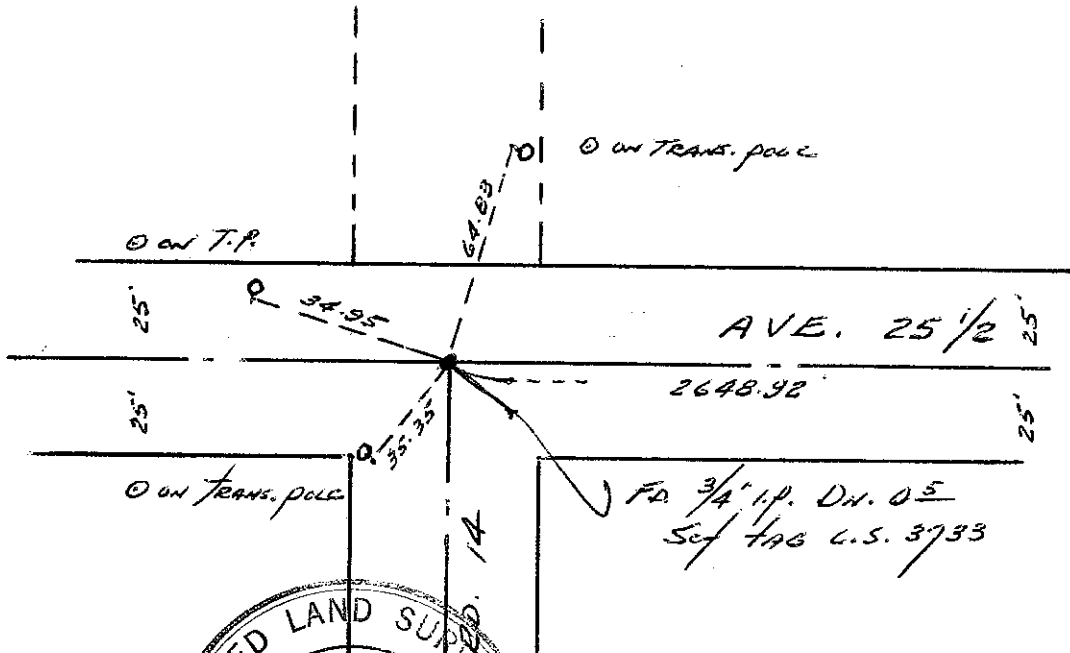
PHYSICAL DESCRIPTION OF CORNER FOUND; EVIDENCE AND METHOD USED TO IDENTIFY OR REESTABLISH

*Monument was found & used on prior surveys
SEE P.M. No 949 BK. 21 of Maps pages 109 & 110*

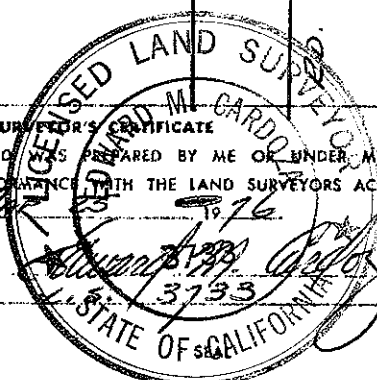
PHYSICAL DESCRIPTION OF MONUMENTS REBUILT OR PERPETUATED

CALIFORNIA COORDINATE SYSTEM ORDER: FIRST SECOND THIRD
 STATIONS USED: NGS (USC & GS) STATE COUNTY OTHER STATION _____ STATION _____
 ZONE _____ ELEVATION _____ NORTHINGS (Y) _____ EASTINGS (X) _____

SKETCH: (Include reference tie or witness points, remarks and topo of area)



SURVEYOR'S CERTIFICATE
 THIS CORNER RECORD WAS PREPARED BY ME OR UNDER MY DIRECTION IN CONFORMANCE WITH THE LAND SURVEYORS ACT ON 11/23 1975



SIGNED: _____
 I.S. or R.C.E. No.: _____

COUNTY SURVEYOR'S CERTIFICATE
 THE CORNER RECORD WAS RECEIVED 3-25 1976
 AND EXAMINED AND FILED 3-29 1976
 BY: A. Grote
 TITLE: County Engineer
 DOCUMENT No. 76-07-01

STATEMENT ON BACK OF SHEET

YES NO