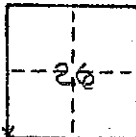


# CORNER RECORD

COUNTY OF Madera T. 9 S. R. 15 E. M.D.B. & M. MERIDIAN CALIFORNIA  
 CORNER TYPE: GOVT. CORNER  MEANDER  RANCHO  CONTROL  OTHER   
 CORNER IDENTIFICATION -- DATE OF VISIT Dec 16 1974



Conc. Mon. as witness Cor. 10.0' feet North of S.W. Cor Sec. 26 T.9 S., R.15 E. M.D.B. & M.

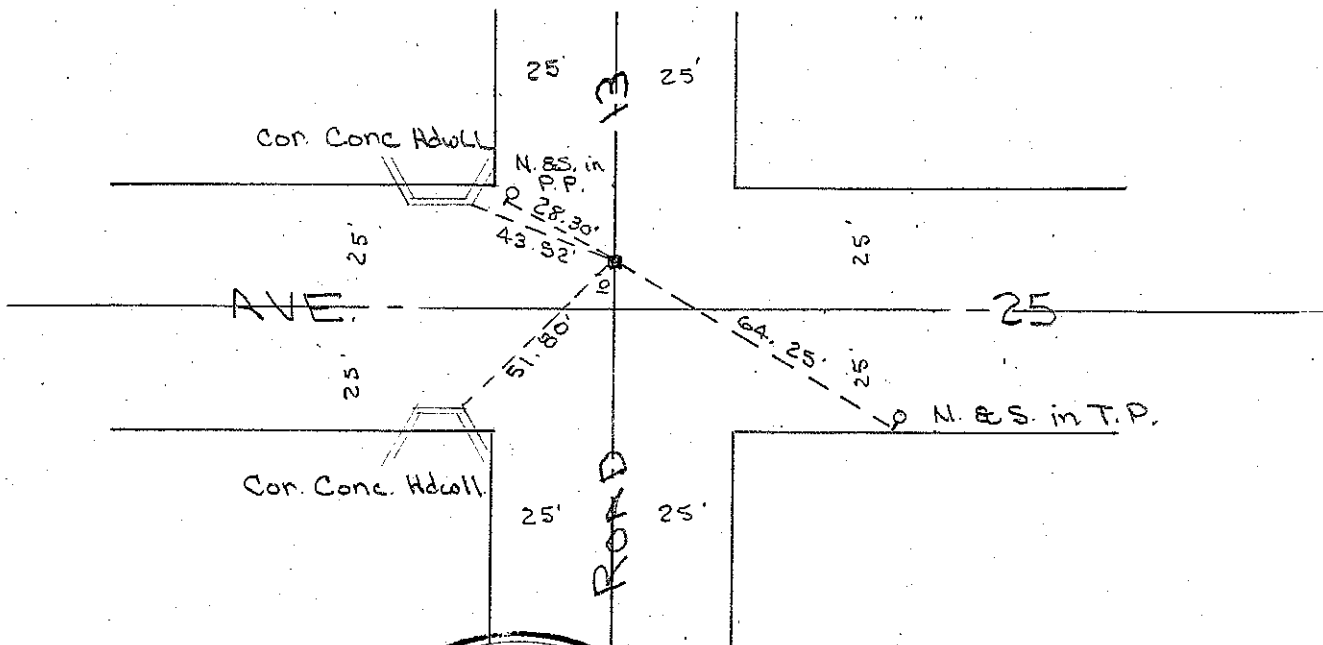
CORNER -- LEFT AS FOUND  FOUND AND TAGGED  REESTABLISHED OBLITERATED CORNER  REBUILT   
 PHYSICAL DESCRIPTION OF CORNER FOUND; EVIDENCE AND METHOD USED TO IDENTIFY OR REESTABLISH

Fd Conc Mon. 10.0' North of Sec. Cor. No mon. at Sec. Cor. as per "Map of Dairyland Farms Sub. #1"

PHYSICAL DESCRIPTION OF MONUMENTS REBUILT OR PERPETUATED

CALIFORNIA COORDINATE SYSTEM ORDER: FIRST  SECOND  THIRD   
 STATIONS USED: NGS (USC & GS)  STATE  COUNTY  OTHER  STATION \_\_\_\_\_ STATION \_\_\_\_\_  
 ZONE \_\_\_\_\_ ELEVATION \_\_\_\_\_ NORTHINGS (Y) \_\_\_\_\_ EASTINGS (X) \_\_\_\_\_

SKETCH: (Include reference tie or witness points, remarks and topo of area)



SURVEYOR'S CERTIFICATE  
 THIS CORNER RECORD WAS PREPARED BY ME UNDER THE DIRECTION IN CONFORMANCE WITH THE LAND SURVEYORS ACT ON 12/16 1975  
 SIGNED: [Signature]  
 L.S. or R.C.E. No.: 3733



COUNTY SURVEYOR'S CERTIFICATE  
 THE CORNER RECORD WAS RECEIVED JUNE 2 1975  
 AND EXAMINED AND FILED June 5 1975  
 BY: [Signature]  
 TITLE: County Engineer

DOCUMENT No. 75-20-04  
 STATEMENT ON BACK OF SHEET YES  NO