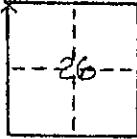


# CORNER RECORD

COUNTY OF Madera T. 9 S. R. 15 E. M.D.B. & M. MERIDIAN CALIFORNIA

CORNER TYPE: GOVT. CORNER  MEANDER  RANCHO  CONTROL  OTHER

CORNER IDENTIFICATION - DATE OF VISIT Dec. 16 19 74



N.W. Cor. Section 26  
T. 9 S.; R. 15 E.; M.D.B. & M.

CORNER - LEFT AS FOUND  FOUND AND TAGGED  REESTABLISHED OBLITERATED CORNER  REBUILT

PHYSICAL DESCRIPTION OF CORNER FOUND; EVIDENCE AND METHOD USED TO IDENTIFY OR REESTABLISH

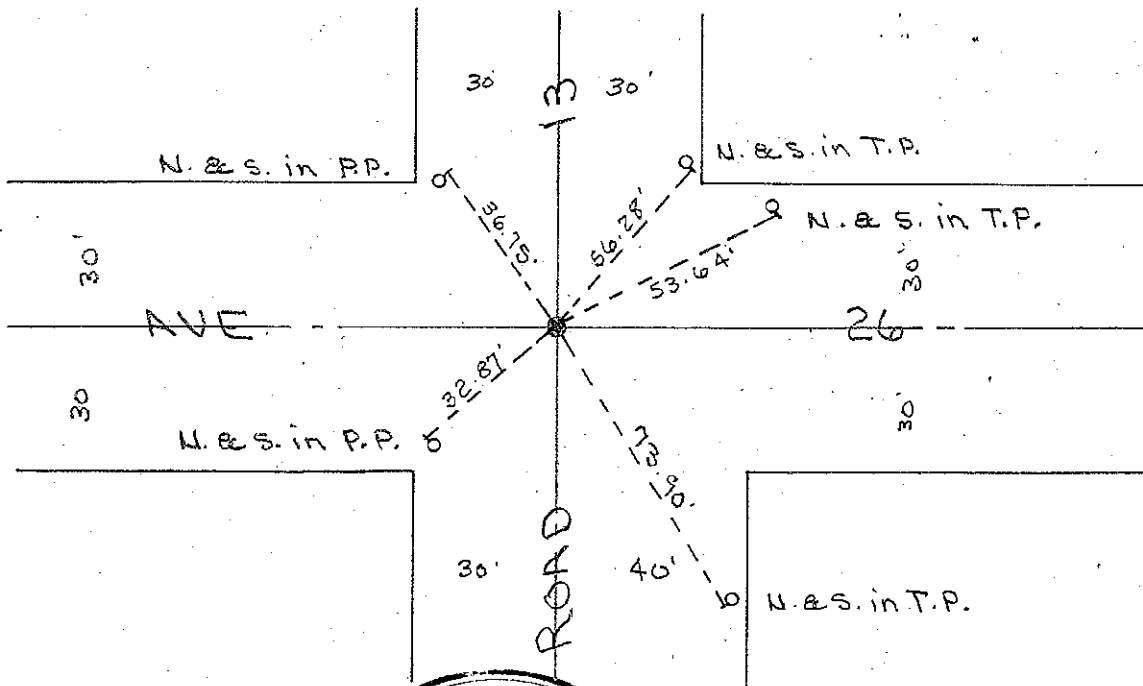
Fd. R.R. Spike

PHYSICAL DESCRIPTION OF MONUMENTS REBUILT OR PERPETUATED

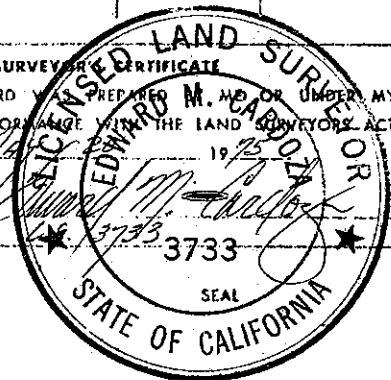
Replaced with 3/4" I.P. with tag L.S. 3733

CALIFORNIA COORDINATE SYSTEM ORDER: FIRST  SECOND  THIRD   
 STATIONS USED: NGS (USC & GS)  STATE  COUNTY  OTHER  STATION \_\_\_\_\_ STATION \_\_\_\_\_  
 ZONE \_\_\_\_\_ ELEVATION \_\_\_\_\_ NORTHINGS (Y) \_\_\_\_\_ EASTINGS (X) \_\_\_\_\_

SKETCH: (Include reference tie or witness points, remarks and topo of area)



SURVEYOR'S CERTIFICATE  
 THIS CORNER RECORD WAS PREPARED BY M. H. CAPRIS OR UNDER MY  
 DIRECTION IN CONFORMANCE WITH THE LAND SURVEYORS ACT  
 ON 1/4 19 75  
 SIGNED: [Signature]  
 I.S. or R.C.E. No.: 3733



COUNTY SURVEYOR'S CERTIFICATE  
 THE CORNER RECORD WAS RECEIVED JUNE 2 19 75  
 AND EXAMINED AND FILED June 5 19 75  
 BY: A. D. Grote  
 TITLE: County Engineer  
 DOCUMENT No. 75-20-62

STATEMENT ON BACK OF SHEET  
 YES  NO