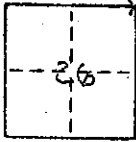


CORNER RECORD

COUNTY OF Madera T. 9S. R. 15E. M.D.B.&M. MERIDIAN CALIFORNIA

CORNER TYPE: GOVT. CORNER MEANDER RANCHO CONTROL OTHER

CORNER IDENTIFICATION — DATE OF VISIT Dec. 16 1974



N.E. Cor section 26.
T. 9S., R. 15E.; M.D.B. & M.

CORNER — LEFT AS FOUND FOUND AND TAGGED REESTABLISHED OBLITERATED CORNER REBUILT

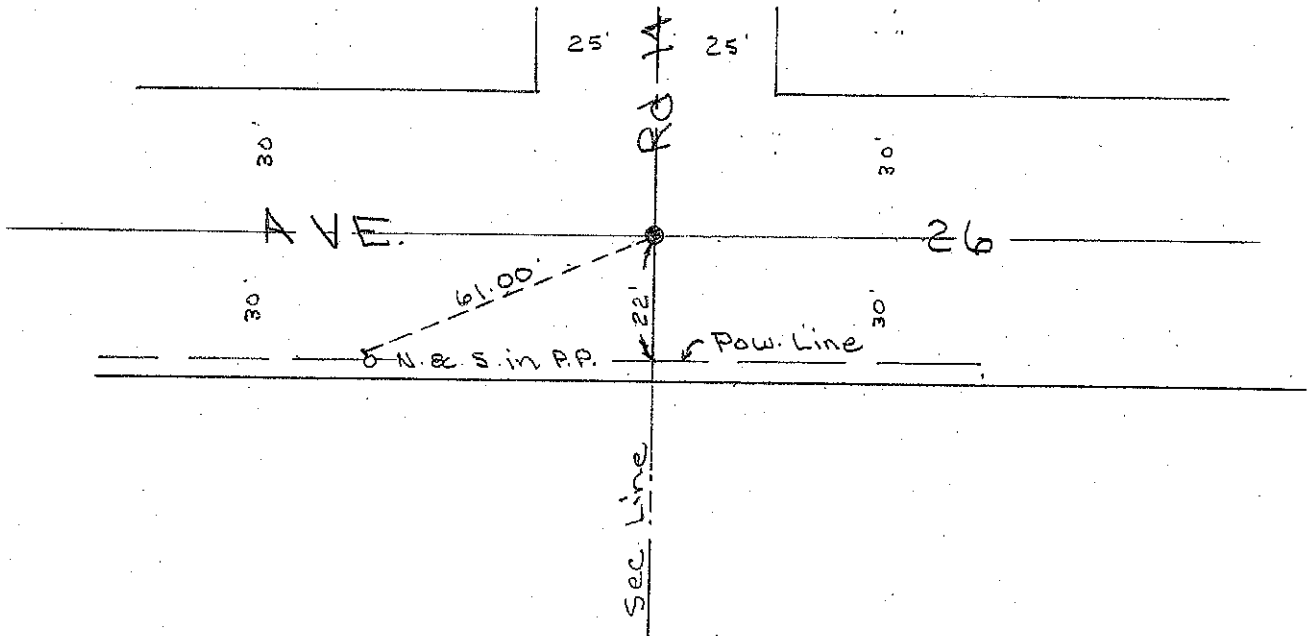
PHYSICAL DESCRIPTION OF CORNER FOUND; EVIDENCE AND METHOD USED TO IDENTIFY OR REESTABLISH

Fd. 1" I.P. down 1.0' foot

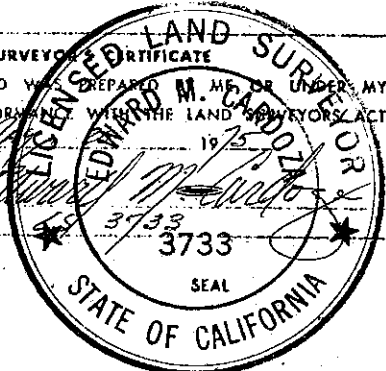
PHYSICAL DESCRIPTION OF MONUMENTS REBUILT OR PERPETUATED

CALIFORNIA COORDINATE SYSTEM ORDER: FIRST SECOND THIRD
 STATIONS USED: NGS (USC & GS) STATE COUNTY OTHER STATION _____ STATION _____
 ZONE _____ ELEVATION _____ NORTHINGS (Y) _____ EASTINGS (X) _____

SKETCH: (Include reference tie or witness points, remarks and topo of area)



SURVEYOR'S CERTIFICATE
 THIS CORNER RECORD WAS PREPARED BY EDWARD M. MADR OR UNDER MY DIRECTION IN CONFORMANCE WITH THE LAND SURVEYORS ACT ON _____ 1975
 SIGNED: [Signature]
 L.S. or R.C.E. No.: 3733



COUNTY SURVEYOR'S CERTIFICATE
 THE CORNER RECORD WAS RECEIVED JUNE 2 1975 AND EXAMINED AND FILED June 5, 1975
 BY: [Signature]
 TITLE: County Engineer
 DOCUMENT No. 75-20-03

STATEMENT ON BACK OF SHEET YES NO