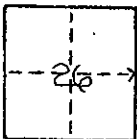


CORNER RECORD

COUNTY OF Madera T. 9 S. R. 15 E. M.D.B&M MERIDIAN CALIFORNIA

CORNER TYPE: GOVT. CORNER MEANDER RANCHO CONTROL OTHER

CORNER IDENTIFICATION - DATE OF VISIT Dec 16, 1974



S.E. Cor. Lot 25, BLOCK 3
"MAP OF DAIRYLAND FARMS SUB. #1"

CORNER - LEFT AS FOUND FOUND AND TAGGED REESTABLISHED OBLITERATED CORNER REBUILT

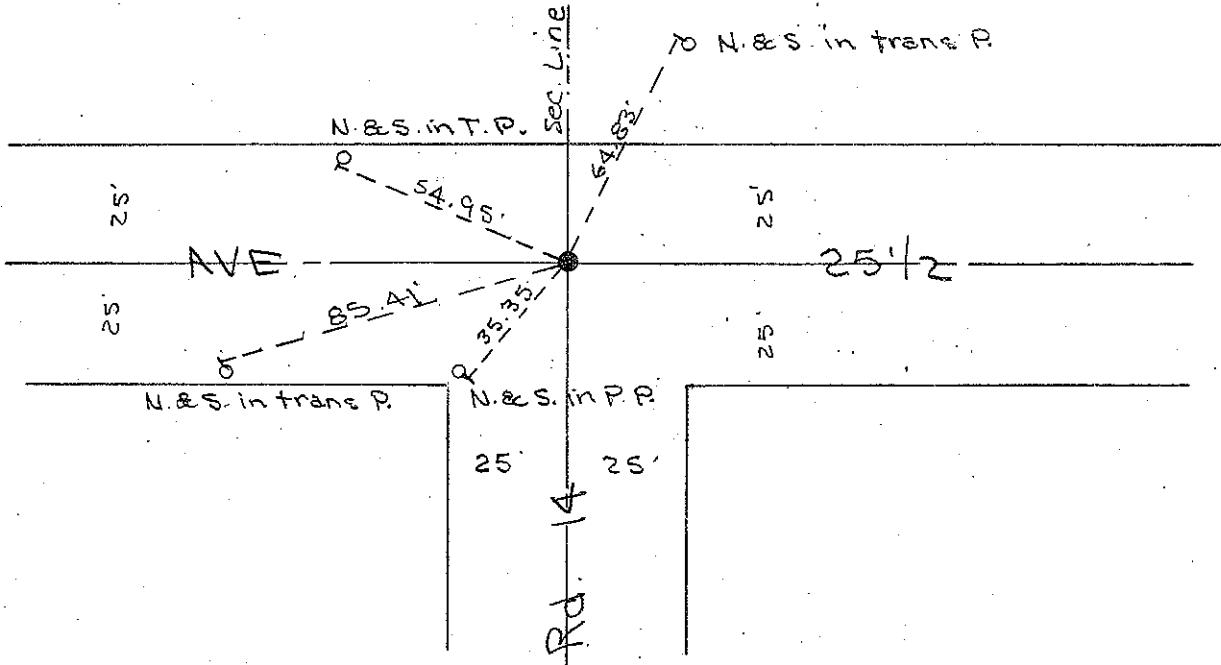
PHYSICAL DESCRIPTION OF CORNER FOUND; EVIDENCE AND METHOD USED TO IDENTIFY OR REESTABLISH

Fd 3/4" I.P down 0.5' foot

PHYSICAL DESCRIPTION OF MONUMENTS REBUILT OR PERPETUATED

CALIFORNIA COORDINATE SYSTEM ORDER: FIRST SECOND THIRD
 STATIONS USED: NGS (USC & GS) STATE COUNTY OTHER STATION _____ STATION _____
 ZONE _____ ELEVATION _____ NORTHINGS (Y) _____ EASTINGS (X) _____

SKETCH: (Include reference tie or witness points, remarks and topo of area)



SURVEYOR'S CERTIFICATE
 THIS CORNER RECORD WAS PREPARED BY ME OR UNDER MY DIRECTION IN CONFORMANCE WITH THE LAND SURVEYORS ACT ON May 20 19 75
 SIGNED: [Signature]
 I.S. or R.C.E. No: 253733

EDWARD M. CARDOZ
 LICENSED LAND SURVEYOR
 3733
 SEAL
 STATE OF CALIFORNIA

COUNTY SURVEYOR'S CERTIFICATE
 THE CORNER RECORD WAS RECEIVED JUNE 2 19 75
 AND EXAMINED AND FILED June 5 19 75
 BY: A. J. Grate
 TITLE: County Engineer
 DOCUMENT No. 75-20-01
 STATEMENT ON BACK OF SHEET YES NO