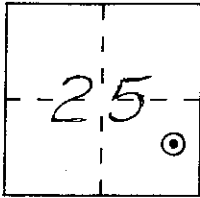


CORNER RECORD

City of Chowchilla Document Number _____
 County of Madera, California
 Brief Legal Description Center line street monument on Gill Way per Andrea Acres I Sub.



T. 9 S., R. 15 E.,
M.D.M.

CORNER TYPE

Government Corner Control
 Meander Property
 Rancho Other
 Date of Survey December 20, 1996

COORDINATES (Optional)

N. _____
 E. _____
 Zone _____ Datum _____
 Elev. _____

Corner — Left as found Found and tagged Established Reestablished Rebuilt

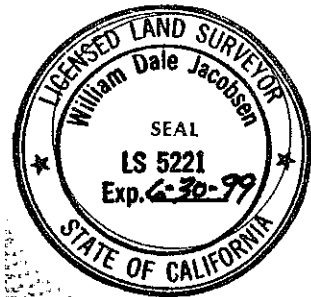
Identification and type of corner found: Evidence used to identify or procedure used to establish or reestablish the corner:
 This corner was referenced by swing ties prior to its removal during street reconstruction. The monument was a 2" brass cap set in a 6" dia. concrete monument, flush with the asphaltic concrete pavement, tagged "LS 4403", and shown as a center line point of curve monument on Ventura Estates Subdivision, filed in Book 34 of Maps, at Pages 82 and 83, M.C.R.. This corner is also shown on Andrea Acres I, filed in Book 26 of Maps, at Pages 2 and 3, M.C.R.. The same swing ties were used to re-establish the corner.

A description of the physical condition of the monument as found and as set or reset:
 The found monument was a 2" brass cap set in a 6" dia. concrete monument, stamped "LS 4403", flush with the existing asphaltic concrete pavement. The reset monument is a 2" brass cap, stamped "RCE 18489", set in a 12" square concrete monument, flush with the existing asphaltic concrete pavement.

SURVEYOR'S STATEMENT

This Corner Record was prepared by me or under my direction in conformance with the Land Surveyors' Act on December 27, 1996.

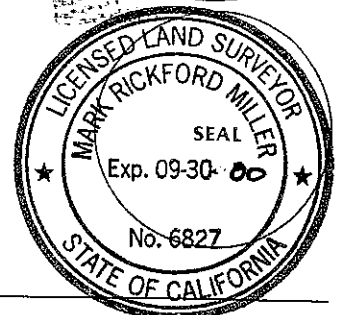
Signed William Dale Jacobsen L.S. or R.C.E. Number L.S. 5221



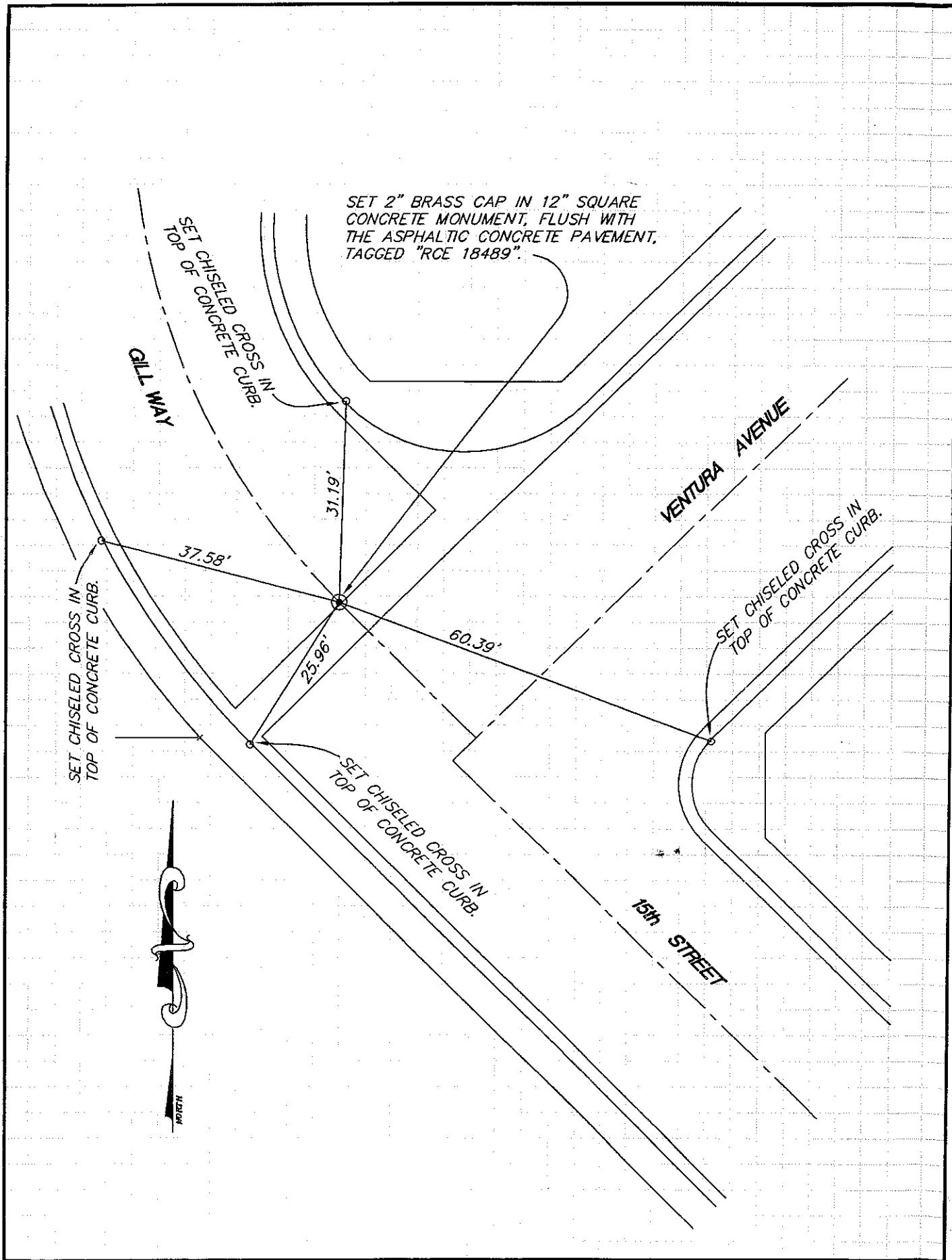
COUNTY SURVEYOR'S STATEMENT

This Corner Record was received December 27, 1996 and examined and filed 30 DECEMBER 1996.

Signed AWLR Miller Title Act. Co. Surveyor



County Surveyor's Comment _____



0915