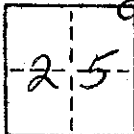


CORNER RECORD

COUNTY OF MADERA T. 9 R. 15 M.D.B. & Co MERIDIAN CALIFOR. 1975
 CORNER TYPE: GOVT. CORNER MEANDER RANCHO CONTROL OTHER
 CORNER IDENTIFICATION — DATE OF VISIT Nov 1975



THEORETICAL SEC 25
N.E. COR. BLK 2 DAIRYLAND FARMS SUB. No 1

CORNER — LEFT AS FOUND FOUND AND TAGGED REESTABLISHED OBLITERATED CORNER REBUILT

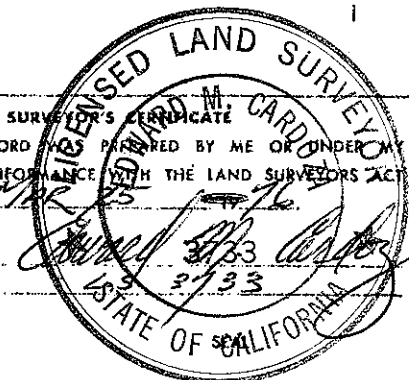
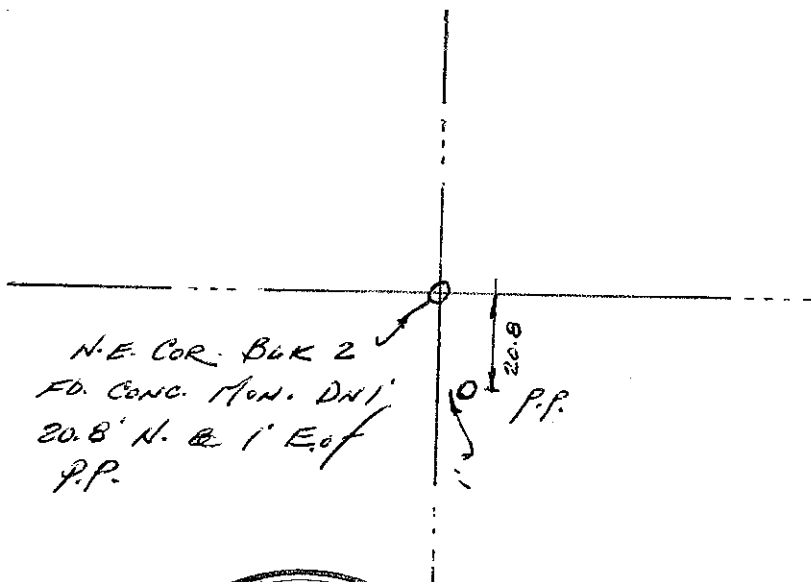
PHYSICAL DESCRIPTION OF CORNER FOUND; EVIDENCE AND METHOD USED TO IDENTIFY OR REESTABLISH

FD. CONC. MON. DN. 12 ft.
Monument used on prior surveys
Note: could not tag monument

PHYSICAL DESCRIPTION OF MONUMENTS REBUILT OR PERPETUATED

CALIFORNIA COORDINATE SYSTEM ORDER: FIRST SECOND THIRD
 STATIONS USED: NGS (USC & GS) STATE COUNTY OTHER STATION _____ STATION _____
 ZONE _____ ELEVATION _____ NORTHINGS (Y) _____ EASTINGS (X) _____

SKETCH: (Include reference tie or witness points, remarks and topo of area)



SURVEYOR'S CERTIFICATE
 THIS CORNER RECORD WAS PREPARED BY ME OR UNDER MY
 DIRECTION IN CONFORMANCE WITH THE LAND SURVEYORS ACT
 ON MAR 25 1976
 SIGNED: William M. Cardon
 L.S. or R.C.E. No. 3733

COUNTY SURVEYOR'S CERTIFICATE
 THE CORNER RECORD WAS RECEIVED 3-25 1976
 AND EXAMINED AND FILED 3-27 1976
 BY: A. Grote
 TITLE: County Engineer
 DOCUMENT No. 76-07-2

STATEMENT ON BACK OF SHEET YES NO