

CORNER RECORD

City of Chowchilla

Document

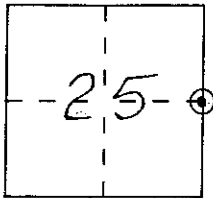
Number

County of

Madera

Brief Legal Description E. 1/4 Corner of Section 25, T. 9 S., R. 15

E., M.D.M.



CORNER TYPE

Government Corner Control
Meander Property
Rancho Other
Date of Survey December 20, 1996

Corner — Left as found Found and tagged Established Reestablished

Identification and type of corner found: Evidence used to identify or procedure used to establish this corner was referenced by swing ties prior to its removal during street recording. This corner was a 3/4" iron pipe, tagged "RCE 18489", down 0.2 feet, as shown on Parcel Maps, at Page 7, M.C.R.. The corner is also indicated as the E. 1/4 Corner of Section 25, T. 9 S., R. 15, M.D.M., as shown on a Plat of Riverside Park, filed in Book 7 of Parcel Maps, at Page 7. Swing ties were used to re-establish the corner.

A description of the physical condition of the monument as found and as reset or reset: The found monument was a 3/4" iron pipe, tagged "RCE 18489", down 0.2 feet in concrete pavement. The reset monument is a 3" brass cap in concrete, flush with existing concrete sidewalk. The brass cap is stamped as indicated in the sketch on the Corner Record.

SURVEYOR'S STATEMENT

This Corner Record was prepared by me or under my direction in conformance with the Land Surveyors' Act on December 27, 1996.

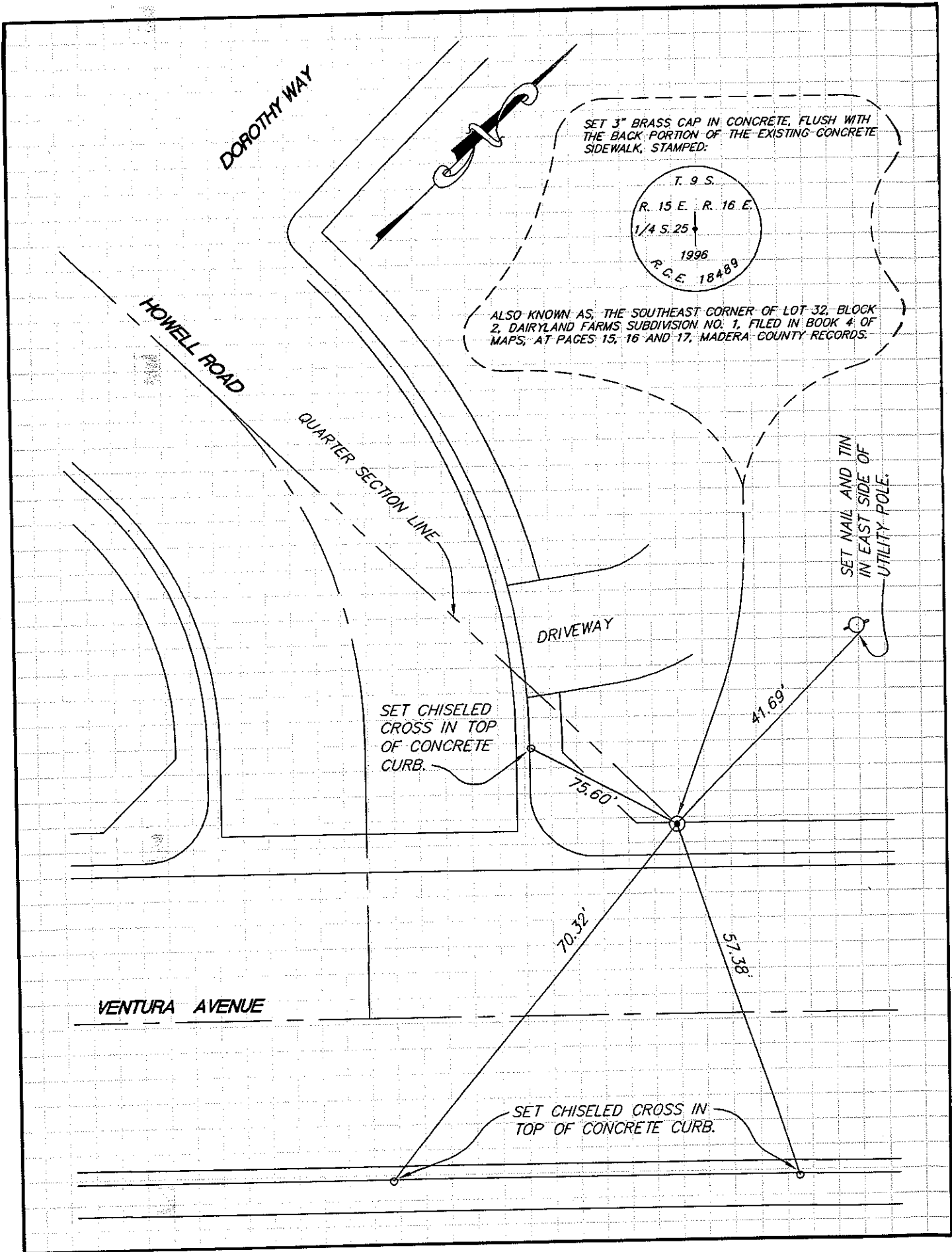
Signed William Dale Jacobson L.S. or R.C.E. Number LS 221

COUNTY SURVEYOR'S STATEMENT

This Corner Record was received December 27, 1996 and examined and filed 30 DECEMBER 1996.

Signed DWLR MVL Title Asst. Co. Surveyor

County Surveyor's Comment



091570240