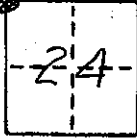


# CORNER RECORD

COUNTY OF MADERA T. 9 S R. 15 E M.D.R. & MERIDIAN CALIFORNIA  
 CORNER TYPE: GOVT. CORNER  MEANDER  RANCHO  CONTROL  OTHER   
 CORNER IDENTIFICATION - DATE OF VISIT May 5 19 75



CORNER - LEFT AS FOUND  FOUND AND TAGGED  REESTABLISHED OBLITERATED CORNER  RESULT

PHYSICAL DESCRIPTION OF CORNER FOUND; EVIDENCE AND METHOD USED TO IDENTIFY OR REESTABLISH

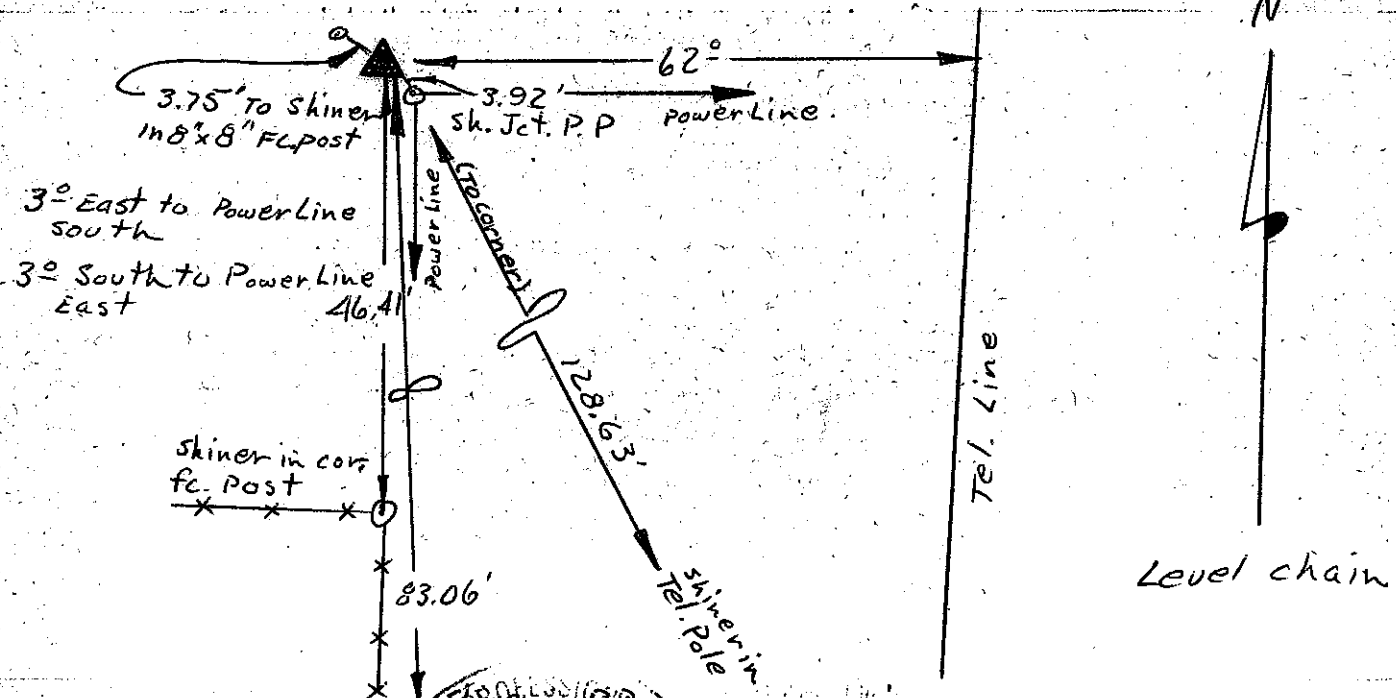
*Fd. 3/4" I.P., 10" down*

PHYSICAL DESCRIPTION OF MONUMENTS RESULT OR PERPETUATED

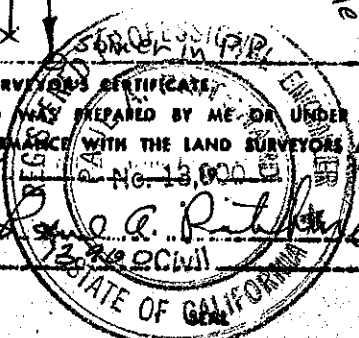
*Retagged, RCE 13900*

CALIFORNIA COORDINATE SYSTEM ORDER: FIRST  SECOND  THIRD   
 STATIONS USED: NGS (USC & OS)  STATE  COUNTY  OTHER  STATION \_\_\_\_\_ STATION \_\_\_\_\_  
 ZONE \_\_\_\_\_ ELEVATION \_\_\_\_\_ NORTHINGS (Y) \_\_\_\_\_ EASTINGS (X) \_\_\_\_\_

SKETCH: (Include reference tie or witness points, remarks and topo of area)



SURVEYOR'S CERTIFICATE  
 THIS CORNER RECORD WAS PREPARED BY ME OR UNDER MY DIRECTION IN CONFORMANCE WITH THE LAND SURVEYORS ACT ON 6/4/75  
 No. 13,900  
 SIGNED: James A. Ritzler  
 or R.C.E. No. 13,900 Civil



COUNTY SURVEYOR'S CERTIFICATE  
 THE CORNER RECORD WAS RECEIVED 6-19 1975  
 AND EXAMINED AND FILED \_\_\_\_\_ 19\_\_\_\_  
 BY: \_\_\_\_\_  
 TITLE: \_\_\_\_\_

DOCUMENT No. \_\_\_\_\_  
 STATEMENT ON BACK OF SHEET YES  NO