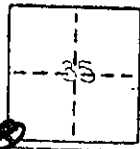


CORNER RECORD

COUNTY OF Madera T. 9 S. R. 14 E. M.D.B.&M. MERIDIAN CALIF.

CORNER TYPE: GOVT. CORNER MEANDER RANCHO CONTROL OTHER

CORNER IDENTIFICATION -- DATE OF VISIT clg 19 75



CORNER -- LEFT AS FOUND FOUND AND TAGGED REESTABLISHED OBLITERATED CORNER REBUILT

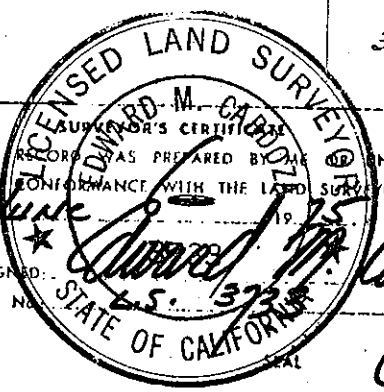
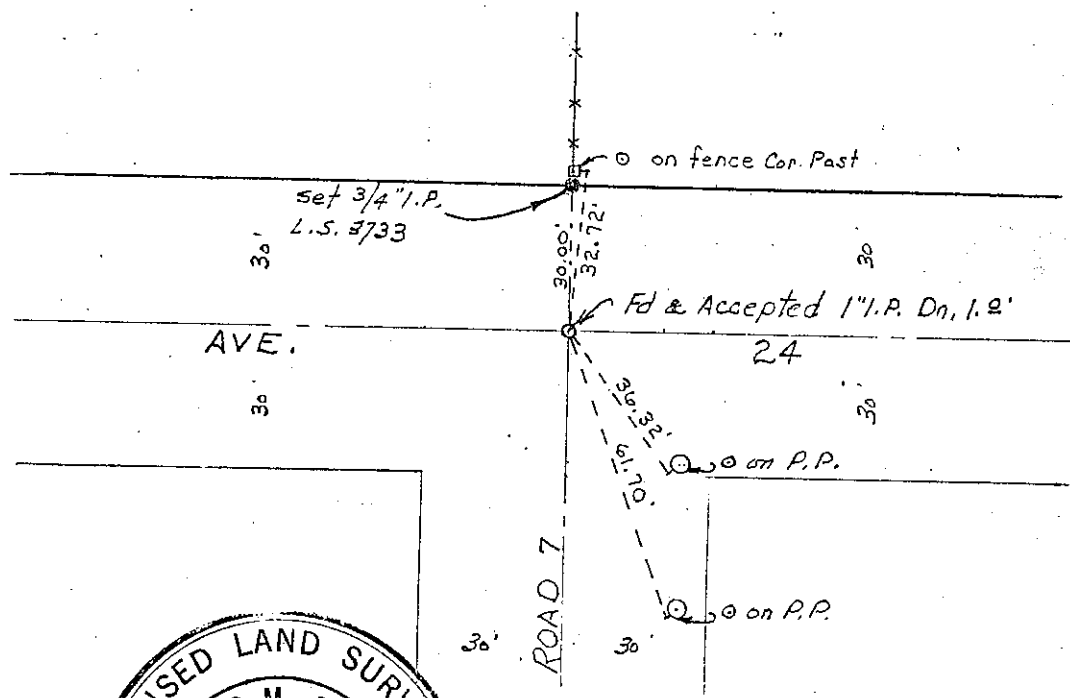
PHYSICAL DESCRIPTION OF CORNER FOUND; EVIDENCE AND METHOD USED TO IDENTIFY OR REESTABLISH

FD. AND Accepted 1" I.P.

PHYSICAL DESCRIPTION OF MONUMENTS RESULT OR PERPETUATED

CALIFORNIA COORDINATE SYSTEM ORDER: FIRST SECOND THIRD
 STATIONS USED: NGS (USC & GS) STATE COUNTY OTHER STATION _____ STATION _____
 ZONE _____ ELEVATION _____ NORTHINGS (Y) _____ EASTINGS (X) _____

SKETCH: (Include reference tie or witness points, remarks and topo of area)



THIS CORNER RECORD WAS PREPARED BY ME UNDER MY DIRECTION IN CONFORMANCE WITH THE LAND SURVEYORS ACT ON June 6 19 75
 SIGNED: *[Signature]*
 L.S. or R.C.E. No. L.S. 3728

COUNTY SURVEYOR'S CERTIFICATE
 THE CORNER RECORD WAS RECEIVED 8.16 1976
 AND EXAMINED AND FILED AUG 19 1976
 BY A. G. G. G.
 TITLE: Co. Engineer
 DOCUMENT No. 76-22-B

STATEMENT ON BACK OF SHEET
 YES NO