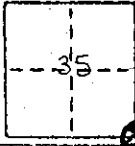


CORNER RECORD

COUNTY OF Madera T. 9 S.; R. 14 E.; M.D.B.&M. MERIDIAN CALIF.

CORNER TYPE: GOV'T. CORNER MEANDER RANCHO CONTROL OTHER

CORNER IDENTIFICATION -- DATE OF VISIT 6/24 1975



CORNER -- LEFT AS FOUND FOUND AND TAGGED REESTABLISHED OBLITERATED CORNER REBUILT

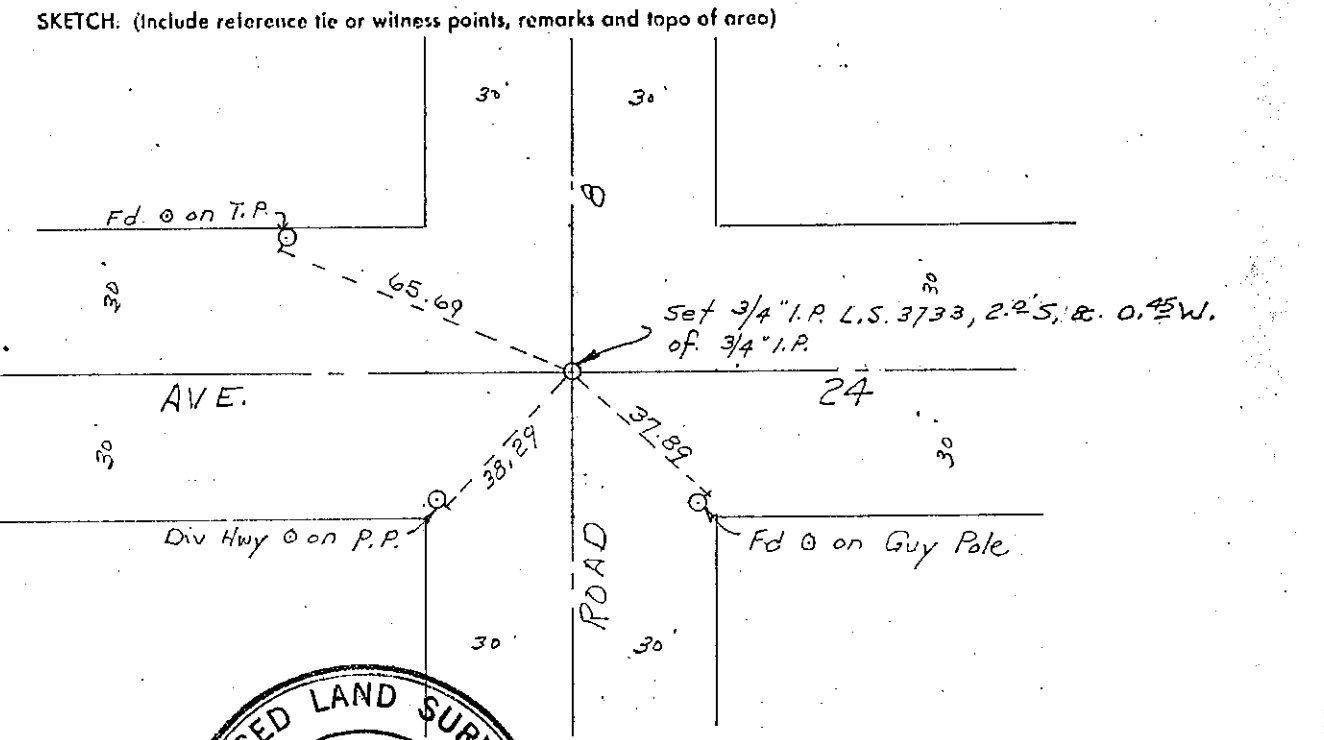
PHYSICAL DESCRIPTION OF CORNER FOUND; EVIDENCE AND METHOD USED TO IDENTIFY OR REESTABLISH

PHYSICAL DESCRIPTION OF MONUMENTS REBUILT OR PERPETUATED

CALIFORNIA COORDINATE SYSTEM ORDER: FIRST SECOND THIRD

STATIONS USED: NGS (USC & GSI) STATE COUNTY OTHER STATION _____

ZONE _____ ELEVATION _____ NORTHINGS (Y) _____ EASTINGS (X) _____



THIS CORNER RECORD WAS PREPARED BY ME UNDER MY DIRECTION IN CONFORMANCE WITH THE LAND SURVEYORS ACT ON June 24 1975

SIGNED: Edward M. Cardo

L.S. or R.C.E. No. 3733

STATE OF CALIFORNIA



COUNTY SURVEYOR'S CERTIFICATE

THE CORNER RECORD WAS RECEIVED 8-16 1976

AND EXAMINED AND FILED Aug. 19 1976

BY: A. Crute

TITLE: Co. Engineer

DOCUMENT No. 76-22-1

STATEMENT ON BACK OF SHEET YES NO