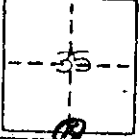


CORNER RECORD

COUNTY OF Madera T. 9S. R. 14E. M.O.B. & M. MERIDIAN CALIF.

CORNER TYPE: GOVT. CORNER MEANDER RANCHO CONTROL OTHER

CORNER IDENTIFICATION — DATE OF VISIT 1/21/75 1975



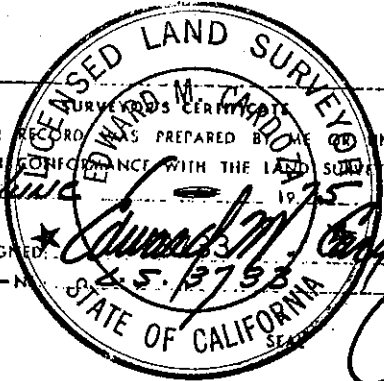
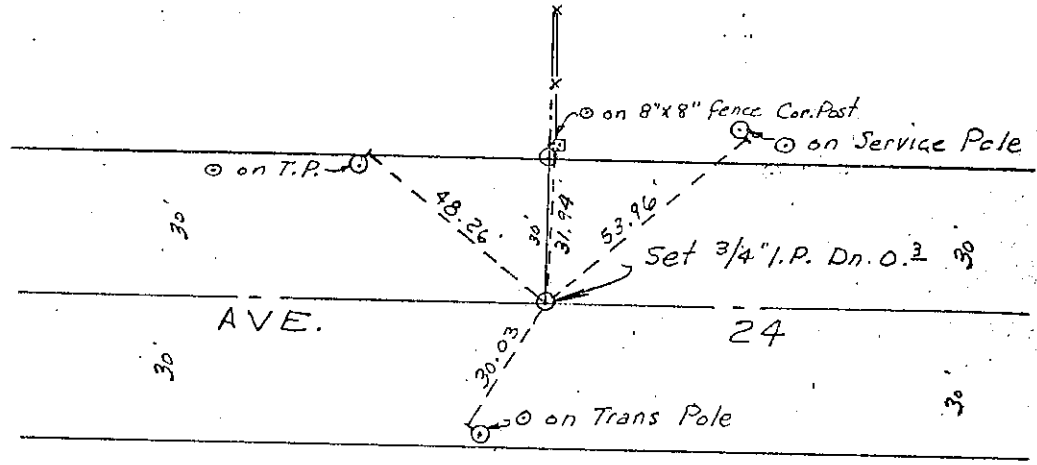
CORNER — LEFT AS FOUND FOUND AND TAGGED REESTABLISHED OBLITERATED CORNER REBUILT

PHYSICAL DESCRIPTION OF CORNER FOUND; EVIDENCE AND METHOD USED TO IDENTIFY OR REESTABLISH
No monument found. - set 3/4" I.P. w/ TAG U.S. 3733

PHYSICAL DESCRIPTION OF MONUMENTS RESULT OR PERPETUATED

CALIFORNIA COORDINATE SYSTEM ORDER: FIRST SECOND THIRD
 STATIONS USED: NGS (USC & GS) STATE COUNTY OTHER STATION _____ STATION _____
 ZONE _____ ELEVATION _____ NORTHINGS (Y) _____ EASTINGS (X) _____

SKETCH. (Include reference tie or witness points, remarks and topo of area)



THIS CORNER RECORD WAS PREPARED BY Edward M. Tardo UNDER MY DIRECTION IN CONFORMANCE WITH THE LAND SURVEYORS ACT ON 1/21/75 1975
 SIGNED: Edward M. Tardo
 U.S. or P.C.E. No. U.S. 3733

COUNTY SURVEYOR'S CERTIFICATE
 THE CORNER RECORD WAS RECEIVED 8-16 1976
 AND EXAMINED AND FILED AUG 19 1976
 BY: A. Grotz
 TITLE: County Engineer
 DOCUMENT No. 76-22-5

STATEMENT ON BACK OF SHEET YES NO