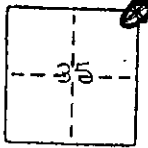


CORNER RECORD

COUNTY OF Madera T. 9 S. R. 14 E. M.D.B. & M. MERIDIAN CALIF.

CORNER TYPE: GOVT. CORNER MEANDER RANCHO CONTROL OTHER
 CORNER IDENTIFICATION — DATE OF VISIT JAN. 1975



CORNER — LEFT AS FOUND FOUND AND TAGGED REESTABLISHED OBLITERATED CORNER REBUILT

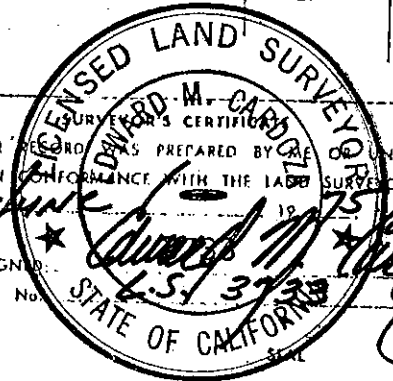
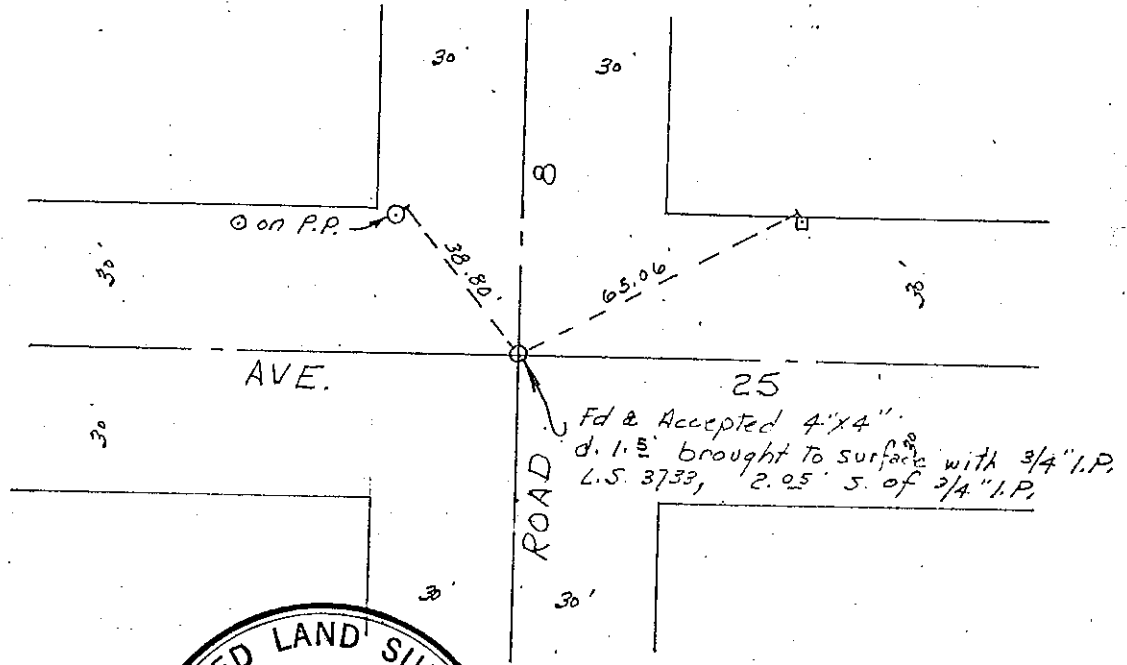
PHYSICAL DESCRIPTION OF CORNER FOUND; EVIDENCE AND METHOD USED TO IDENTIFY OR REESTABLISH

FD 4x4 REDWOOD post

PHYSICAL DESCRIPTION OF MONUMENTS REBUILT OR PERPETUATED

CALIFORNIA COORDINATE SYSTEM ORDER: FIRST SECOND THIRD
 STATIONS USED: NGS (USC & GS) STATE COUNTY OTHER STATION _____ STATION _____
 ZONE _____ ELEVATION _____ NORTHINGS (Y) _____ EASTINGS (X) _____

SKETCH: (Include reference tie or witness points, remarks and topo of area)



THIS CORNER RECORD WAS PREPARED BY Daniel M. Card UNDER MY DIRECTION IN CONFORMANCE WITH THE LAND SURVEYORS ACT ON _____ 1975
 SIGNATURE: *[Signature]*
 L.S. or R.C.E. No. L.S. 3733

COUNTY SURVEYOR'S CERTIFICATE
 THE CORNER RECORD WAS RECEIVED 8-16 1976
 AND EXAMINED AND FILED AUG 19 1976
 BY: *[Signature]*
 TITLE: County Engineer
 DOCUMENT No. 76-22-2

STATEMENT ON BACK OF SHEET YES NO