

# CORNER RECORD

COUNTY OF MADERA T. 6 R. 21 MT. DIABLO MERIDIAN CALIFORNIA  
 CORNER TYPE: GOVT. CORNER  MEANDER  RANCHO  CONTROL  OTHER   
 CORNER IDENTIFICATION — DATE OF VISIT 25 April 19 79

2

w<sup>1</sup>/<sub>4</sub> cor. SEC. 2

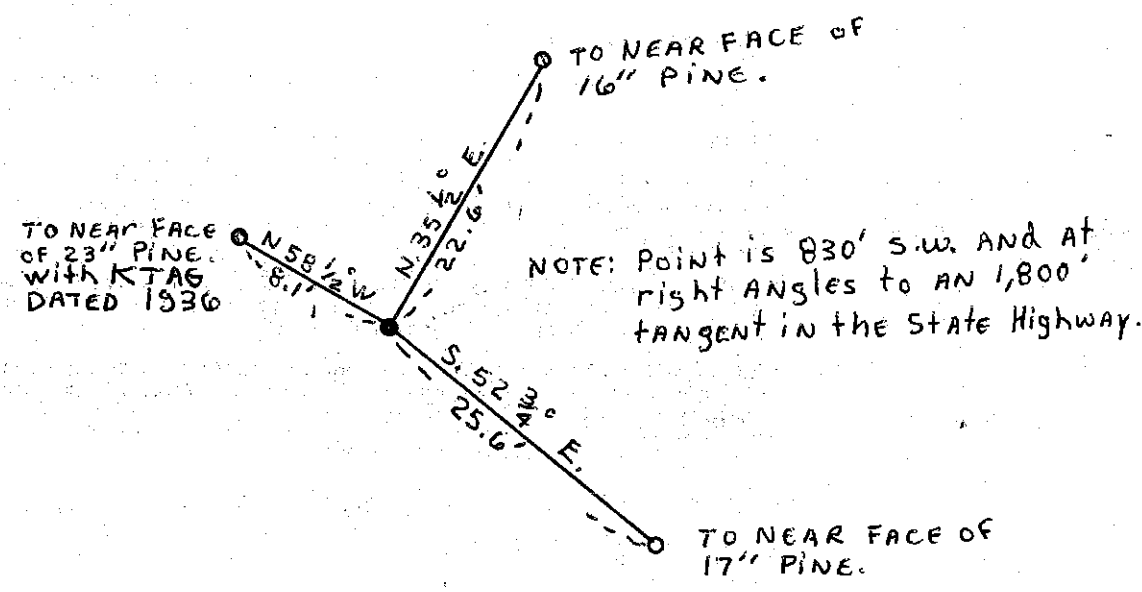
CORNER — LEFT AS FOUND  FOUND AND TAGGED  REESTABLISHED OBLITERATED CORNER  REBUILT

PHYSICAL DESCRIPTION OF CORNER FOUND; EVIDENCE AND METHOD USED TO IDENTIFY OR REESTABLISH  
 FOUND: Department of Agriculture CADASTRAL SURV. CAPPED PIPE MONUMENT. DATED 1979 IN ROCK MOUND 8" ABOVE GROUND. Located and identified by Forest Service Notes and Ties

PHYSICAL DESCRIPTION OF MONUMENTS REBUILT OR PERPETUATED  
 see Above

CALIFORNIA COORDINATE SYSTEM ORDER: FIRST  SECOND  THIRD   
 STATIONS USED: NGS (USC & GS)  STATE  COUNTY  OTHER  STATION \_\_\_\_\_ STATION \_\_\_\_\_  
 ZONE \_\_\_\_\_ ELEVATION \_\_\_\_\_ NORTHINGS (Y) \_\_\_\_\_ EASTINGS (X) \_\_\_\_\_

SKETCH: (Include reference tie or witness points, remarks and topo of area)



NOTE: BEARINGS ARE MAGNETIC BEARINGS TAKEN BY U.S.F.S. USING 17° DECLINATION.

**SURVEYOR'S CERTIFICATE**  
 THIS CORNER RECORD WAS PREPARED BY ME OR UNDER MY DIRECTION IN CONFORMANCE WITH THE LAND SURVEYORS ACT ON OCT 2 19 79  
 SIGNED: Jack Wunk  
 L.S. or R.C.E. No. 12278

**COUNTY SURVEYOR'S CERTIFICATE**  
 THE CORNER RECORD WAS RECEIVED \_\_\_\_\_ 19 \_\_\_\_\_ AND EXAMINED AND FILED Dec 18 19 79  
 BY: A. Brota  
 TITLE: County Engineer  
 DOCUMENT No. \_\_\_\_\_

SEAL

STATEMENT ON BACK OF SHEET YES  NO