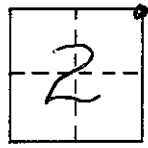


NW SEC 1, T6S, R21E ✓

CORNER RECORD

COUNTY OF MADERA T. 6S R. 21E MT DIABLO MERIDIAN CALIFORNIA
 CORNER TYPE: GOV'T. CORNER MEANDER RANCHO CONTROL OTHER
 CORNER IDENTIFICATION - DATE OF VISIT APRIL 18 19 90



CORNER - LEFT AS FOUND FOUND AND TAGGED REESTABLISHED OBLITERATED CORNER REBUILT

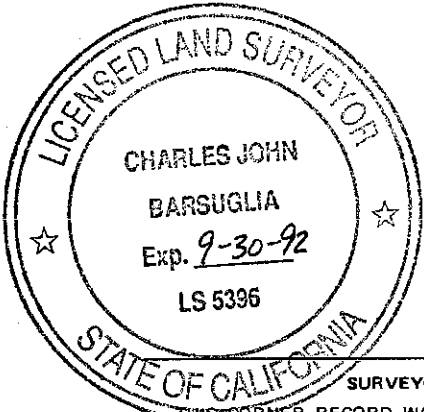
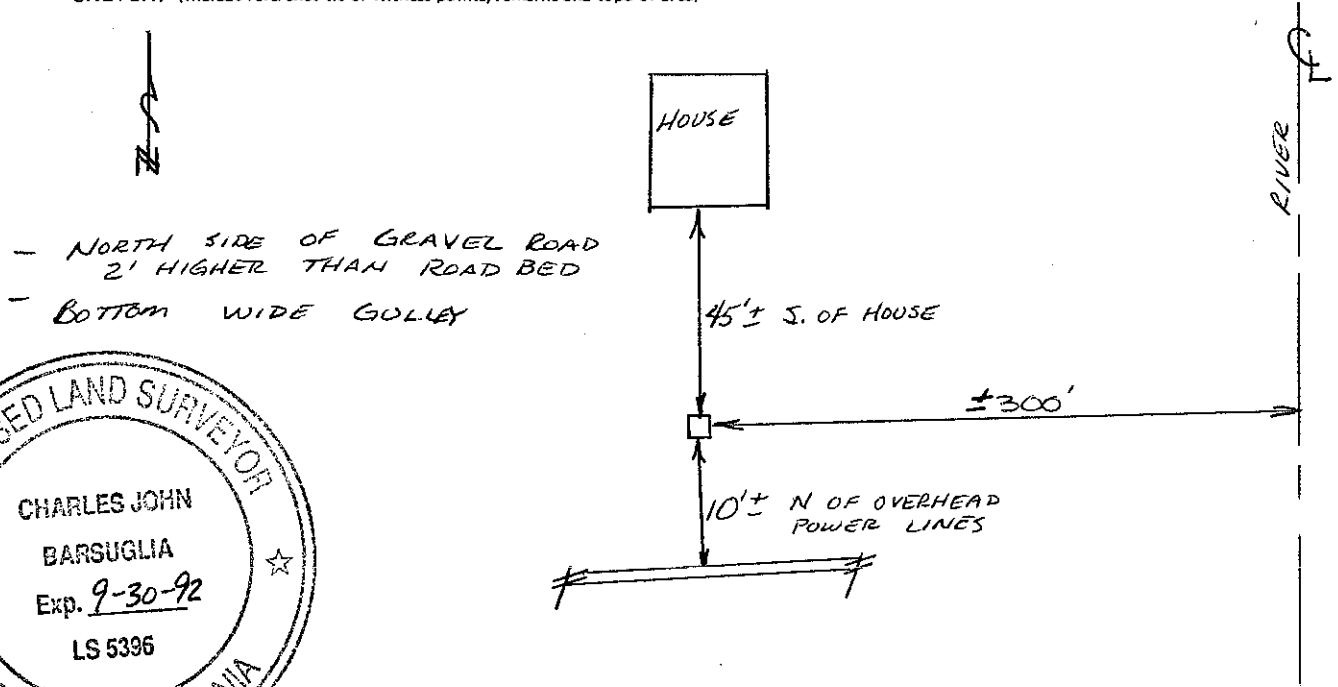
PHYSICAL DESCRIPTION OF CORNER FOUND; EVIDENCE AND METHOD USED TO IDENTIFY OR REESTABLISH

FOUND 2" IRON PIPE
UP 8 INCHES

PHYSICAL DESCRIPTION OF MONUMENTS REBUILT OR PERPETUATED

CALIFORNIA COORDINATE SYSTEM ORDER: FIRST SECOND THIRD
 STATIONS USED: NGS (USC & GS) STATE COUNTY OTHER STATION _____
 ZONE _____ ELEVATION _____ NORTHINGS (Y) _____ EASTINGS (X) _____

SKETCH: (Include reference tie or witness points, remarks and topo of area)



SURVEYOR'S CERTIFICATE
 THIS CORNER RECORD WAS PREPARED BY ME OR UNDER MY
 DIRECTION IN CONFORMANCE WITH THE LAND SURVEYORS ACT
 ON 5-24 19 90
 FOR THE STATE OF CALIFORNIA

SIGNED: Charles Barsuglia
 LS. or R.C.E. No.: 5396

SEAL

COUNTY SURVEYOR'S CERTIFICATE
 THE CORNER RECORD WAS RECEIVED _____ 19_____
 AND EXAMINED AND FILED 6-18 19 90
 BY: Dave Stinson
 TITLE: _____

DOCUMENT No. _____
 STATEMENT ON BACK OF SHEET

DOWE STINSON
 MADERA COUNTY ENGINEER

YES NO