

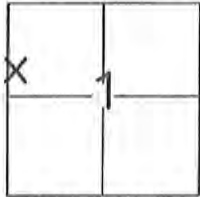
CORNER RECORD

Document Number _____

City of UNINCORPORATED

County of MADERA, California

Brief Legal Description LOT 28 OF "MAP OF SUGAR PINE" RECORDED IN BOOK 5 OF MAPS, PAGE 59, M.C.R.



T.6S., R.21E.

CORNER TYPE

Government Corner Control
 Meander Property
 Rancho Other

Date of Survey JUNE 26, 2015

COORDINATES(Optional)

N. _____
 E. _____
 Zone _____ NAD27 NAD83
 NAD83 Epoch _____
 Elev. _____
 Vert. Datum: NGVD29 NADV88
 Meas. Units: Metric Imperial

Corner - Left as found Found and tagged Established Reestablished Rebuilt

Identification and type of corner found: Evidence used to identify or procedure used to establish or reestablish the corner:
FOUND ORIGINAL MONUMENTS FROM THE "MAP OF SUGAR PINE" AND USED THEM TO REESTABLISH THE CORNERS OF LOT 28. SEE PAGE 2.

A description of the physical condition of the monument as found and as set or reset:
SET MONUMENTS AS DESCRIBED ON PAGE 2.

SURVEYOR'S STATEMENT

This Corner Record was prepared by me or under my direction in conformance with the Land Surveyor's Act on JUNE 29, 2015

Signed _____ P.L.S. or R.C.E. No.: PLS 8779



COUNTY SURVEYOR'S STATEMENT

This Corner Record was received July 7, 2015 and examined and filed August 4, 2015

Signed David M. McGlasson P.L.S. or R.C.E. No.: PLS 6968

Title Acting County Surveyor

County Surveyor's Comment _____

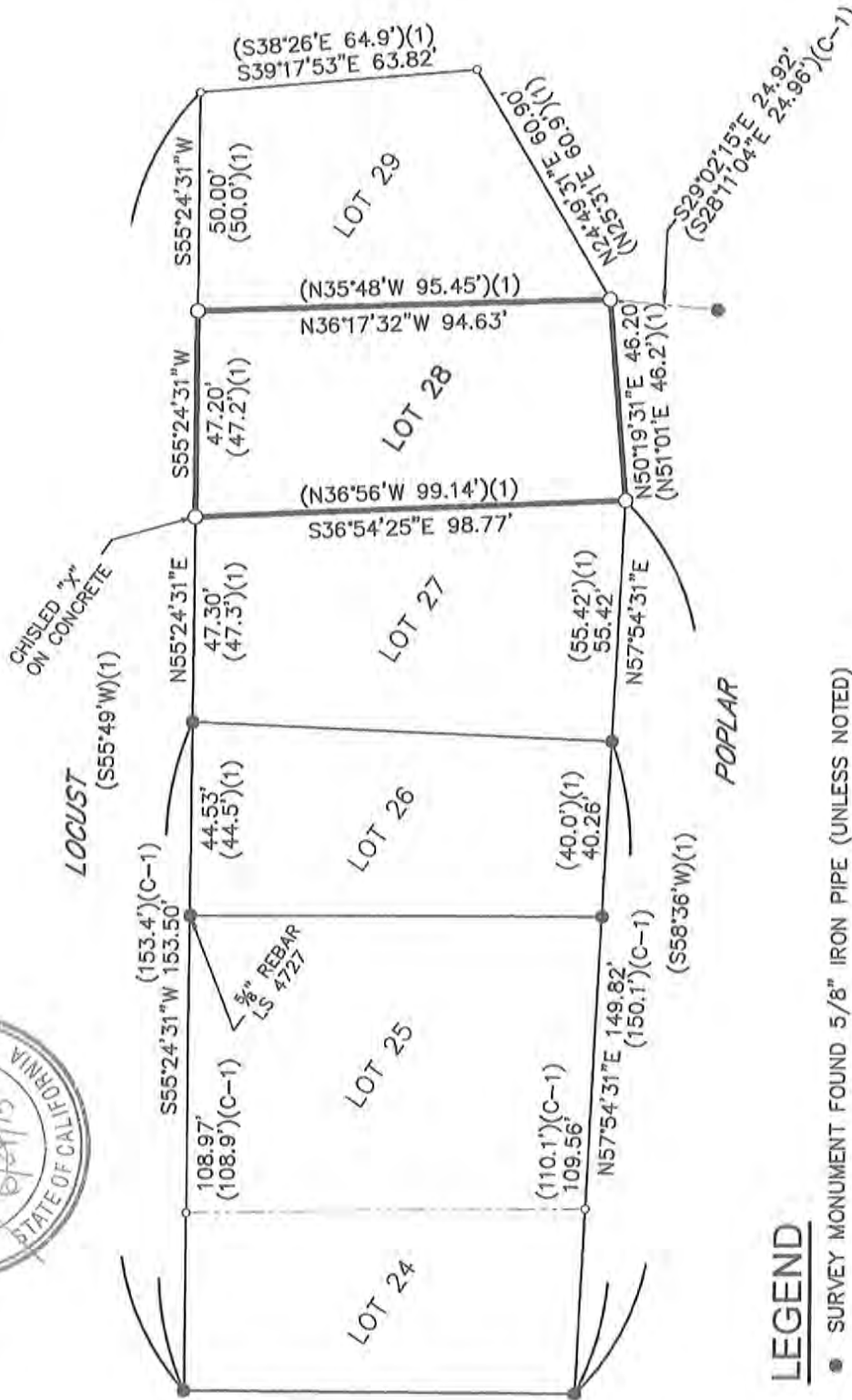


CORNER RECORD

LOT 28 OF "MAP OF SUGAR PINE", RECORDED IN
 BOOK 5 OF MAPS AT PAGE 59, M.C.R.
 LOCATED IN SECTION 1, T.6.S., R.21E.



SCALE 1"=40'



LEGEND

- SURVEY MONUMENT FOUND 5/8" IRON PIPE (UNLESS NOTED)
- SET 5/8" REBAR, TAGGED LS 8779, UNLESS NOTED
- DIMENSION POINT (NOTHING FOUND OR SET)
- PROPERTY LINE
- ADJOINING PROPERTY LINE
- - - - - NOT A DIVISION LINE

JONES SNYDER & ASSOCIATES
 P.O. BOX 2292, OAKHURST, CA 93644
 (559) 683-7661 WWW.JSSURVEYING.COM
 DATE: 06/29/15 DWG FILE: 15-191CR.dwg
 JOB NO: 15-191 DRAWN BY: RJD