

CORNER RECORD

COUNTY OF Madera T. 65 R. 20E MD MERIDIAN CALIF.

CORNER TYPE: GOV'T CORNER MEANDER RANCHO CONTROL OTHER

CORNER IDENTIFICATION --- DATE OF VISIT Sept 10 19 74



SE Cor., Sec. 36, T. 65., R. 20E., MDB&M

CORNER -- LEFT AS FOUND FOUND & TAGGED REESTABLISHED OBLITERATED CORNER
REBUILT

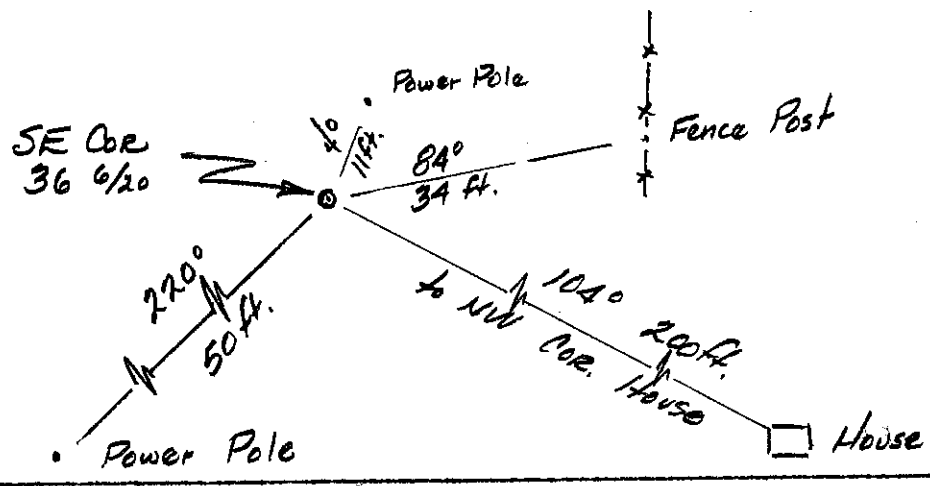
PHYSICAL DESCRIPTION OF CORNER FOUND; EVIDENCE & METHOD USED TO IDENTIFY OR REESTABLISH:

A 2" iron pipe with Brass Cap stamped LS 2737

PHYSICAL DESCRIPTION OF MONUMENTS REBUILT OR PERPETUATED:

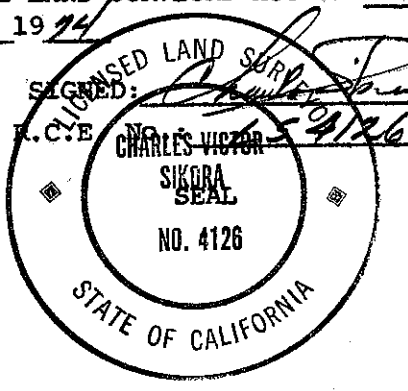
CALIFORNIA COORDINATE SYSTEM ORDER: FIRST SECOND THIRD
STATIONS USED: NOS (USC & GS) STATE COUNTY OTHER STATION _____
STATION _____ ZONE _____ ELEVATION _____ NORTHINGS (Y) _____
EASTINGS (X) _____

SKETCH: (INCLUDE REFERENCE TIE OR WITNESS POINTS, REMARKS AND TOPO OF AREA)



SURVEYOR'S CERTIFICATE

THIS CORNER RECORD WAS PREPARED BY ME OR UNDER MY DIRECTION IN CONFORMANCE WITH THE LAND SURVEYORS ACT ON Oct 7 1974



L.S. or R.C.E.

COUNTY SURVEYOR'S CERTIFICATE

THE CORNER RECORD WAS RECEIVED Oct 15 1974 and examined and filed Oct 24, 1974
BY: Albert O. Guste
TITLE: County Engineer

DOCUMENT No. 74-25-3

STATEMENT ON BACK OF SHEET
YES NO