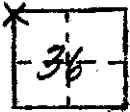


CORNER RECORD

COUNTY OF Madera T. 65 R. 20E MD MERIDIAN CALIF.

CORNER TYPE: GOV'T CORNER  MEANDER  RANCHO  CONTROL  OTHER

CORNER IDENTIFICATION --- DATE OF VISIT Oct. 1 19 74



NW  
NE COR., Sec. 36, T. 65., R. 20E., MDBM

CORNER -- LEFT AS FOUND  FOUND & TAGGED  REESTABLISHED OBLITERATED CORNER   
REBUILT

PHYSICAL DESCRIPTION OF CORNER FOUND; EVIDENCE & METHOD USED TO IDENTIFY OR REESTABLISH:

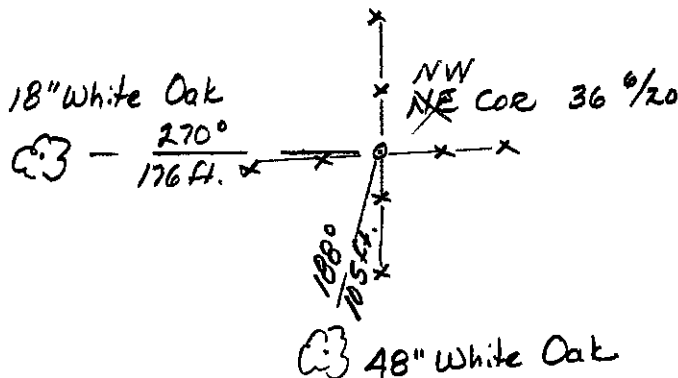
Found 4"x4" Slate Monument

PHYSICAL DESCRIPTION OF MONUMENTS REBUILT OR PERPETUATED:

N.A.

CALIFORNIA COORDINATE SYSTEM ORDER: FIRST  SECOND  THIRD   
STATIONS USED: NOS (USC & GS)  STATE  COUNTY  OTHER  STATION \_\_\_\_\_  
STATION \_\_\_\_\_ ZONE \_\_\_\_\_ ELEVATION \_\_\_\_\_ NORTHINGS (Y) \_\_\_\_\_  
EASTINGS (X) \_\_\_\_\_

SKETCH: (INCLUDE REFERENCE TIE OR WITNESS POINTS, REMARKS AND TOPO OF AREA)



*Note: corrections made by surveyor by telephone on 10/23/74*

SURVEYOR'S CERTIFICATE

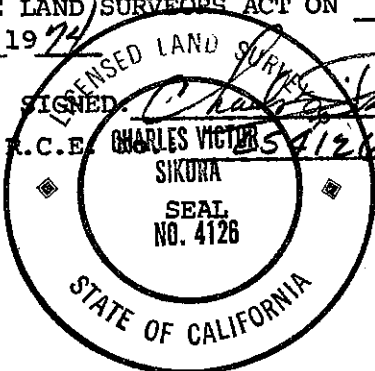
THIS CORNER RECORD WAS PREPARED BY ME OR UNDER MY DIRECTION IN CONFORMANCE WITH THE LAND SURVEYORS ACT ON

Oct. 11 1974

SIGNED

Charles Victor Siskura

L.S. or R.C.E.



COUNTY SURVEYOR'S CERTIFICATE

THE CORNER RECORD WAS RECEIVED Oct 15 1974 and examined and filed Oct. 26, 1974

BY: Albert O. Grote

TITLE: County Engineer

DOCUMENT No. 74-25-4

STATEMENT ON BACK OF SHEET

YES  NO