

CORNER RECORD

COUNTY OF Madera T. 6S R. 20E MD MERIDIAN CALIF.

CORNER TYPE: GOV'T CORNER MEANDER RANCHO CONTROL OTHER

CORNER IDENTIFICATION --- DATE OF VISIT Sept. 30 1974



NE Cor., Sec. 36, T. 6S., R. 20E., M.D.B. & M.

CORNER -- LEFT AS FOUND FOUND & TAGGED REESTABLISHED OBLITERATED CORNER
REBUILT

PHYSICAL DESCRIPTION OF CORNER FOUND; EVIDENCE & METHOD USED TO IDENTIFY OR REESTABLISH:

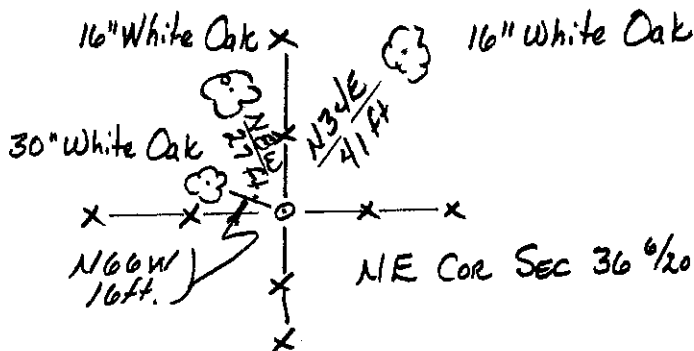
Found 1 1/2" iron pipe with Brass Cap tagged RCE 5982

PHYSICAL DESCRIPTION OF MONUMENTS REBUILT OR PERPETUATED:

N.A.

CALIFORNIA COORDINATE SYSTEM ORDER: FIRST SECOND THIRD
STATIONS USED: NOS (USC & GS) STATE COUNTY OTHER STATION _____
STATION _____ ZONE _____ ELEVATION _____ NORTHINGS (Y) _____
EASTINGS (X) _____

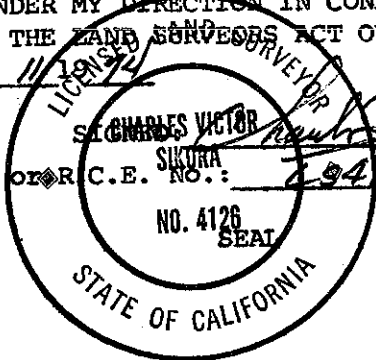
SKETCH: (INCLUDE REFERENCE TIE OR WITNESS POINTS, REMARKS AND TOPO OF AREA)



SURVEYOR'S CERTIFICATE

THIS CORNER RECORD WAS PREPARED BY ME OR UNDER MY DIRECTION IN CONFORMANCE WITH THE LAND SURVEYORS ACT ON

Oct 11 1974



COUNTY SURVEYOR'S CERTIFICATE

THE CORNER RECORD WAS RECEIVED Oct 15 1974 and examined and filed Oct. 24, 1974

BY: Albert D. Gorte

TITLE: County Engineers

DOCUMENT No. 74-25-2

STATEMENT ON BACK OF SHEET
YES NO