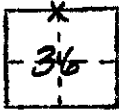


CORNER RECORD

COUNTY OF Madern T. 65 R. 20E MD MERIDIAN CALIF.

CORNER TYPE: GOV'T CORNER MEANDER RANCHO CONTROL OTHER

CORNER IDENTIFICATION --- DATE OF VISIT Sept 30 19 74



N 1/4 Cor., Sec. 36, T. 65., R. 20E., MDB&M

CORNER -- LEFT AS FOUND FOUND & TAGGED REESTABLISHED OBLITERATED CORNER
REBUILT

PHYSICAL DESCRIPTION OF CORNER FOUND; EVIDENCE & METHOD USED TO IDENTIFY OR REESTABLISH:

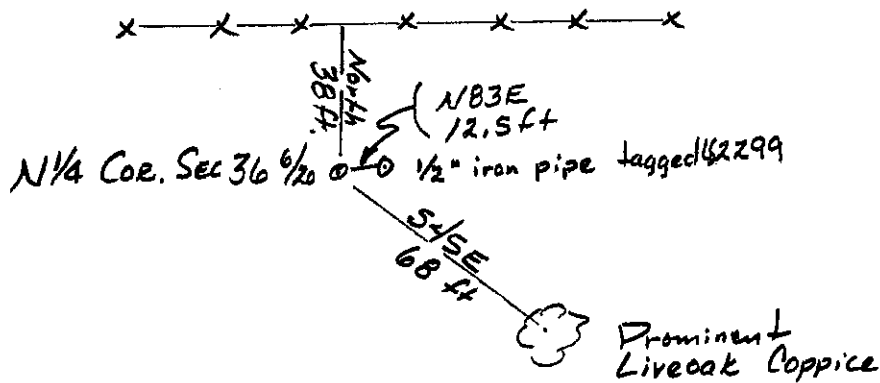
Found 3/4" iron pipe in rock mound tagged LS 2737

PHYSICAL DESCRIPTION OF MONUMENTS REBUILT OR PERPETUATED:

N.A.

CALIFORNIA COORDINATE SYSTEM ORDER: FIRST SECOND THIRD
STATIONS USED: NOS (USC & GS) STATE COUNTY OTHER STATION _____
STATION _____ ZONE _____ ELEVATION _____ NORTHINGS (Y) _____
EASTINGS (X) _____

SKETCH: (INCLUDE REFERENCE TIE OR WITNESS POINTS, REMARKS AND TOPO OF AREA)



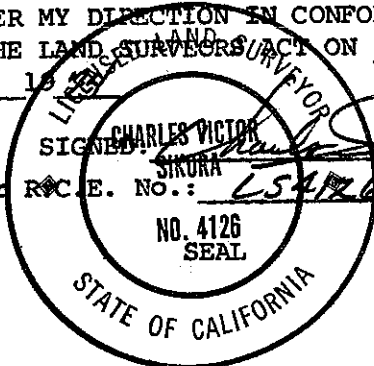
SURVEYOR'S CERTIFICATE

THIS CORNER RECORD WAS PREPARED BY ME OR UNDER MY DIRECTION IN CONFORMANCE WITH THE LAND SURVEYORS ACT ON

Oct 11 1974

SIGNED: Charles Victor Sikora

L.S. or R.C.E. No.: LS 4126



COUNTY SURVEYOR'S CERTIFICATE

THE CORNER RECORD WAS RECEIVED Oct 15 1974 and examined and filed Oct 24, 1974

BY: Albert O. Grate
TITLE: County Engineer

DOCUMENT No. 74-25-5

STATEMENT ON BACK OF SHEET
YES NO