

CORNER RECORD

COUNTY OF Madera T. 6 S R. 20 E MP MERTSIAN CALIF.

CORNER TYPE: GOV'T CORNER MEANDER RANCHO CONTROL OTHER

CORNER IDENTIFICATION --- DATE OF VISIT Sept. 10 1974

36 * E 1/4 Cor. Sec. 36, T. 6 S., R. 20 E., M. D. B & M.

CORNER -- LEFT AS FOUND FOUND & TAGGED REESTABLISHED OBSOLETE CORNER
REBUILT

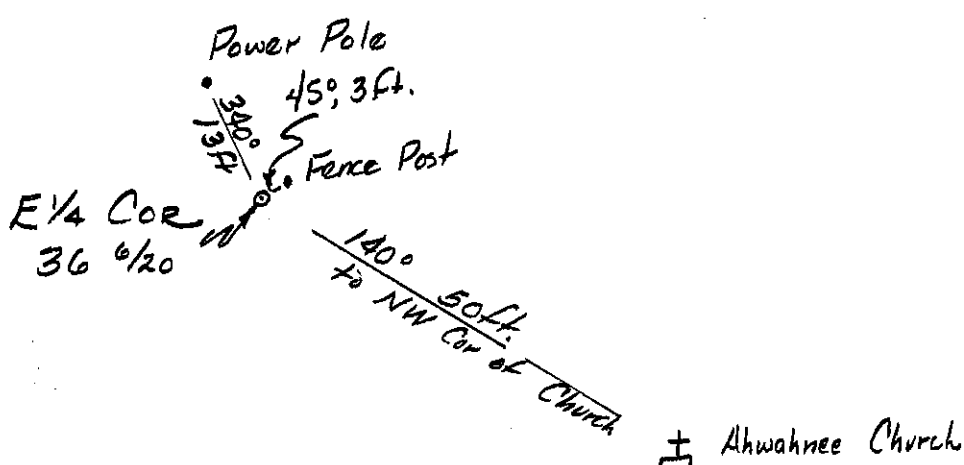
PHYSICAL DESCRIPTION OF CORNER FOUND; EVIDENCE & METHOD USED TO IDENTIFY OR REESTABLISH:

A 2" iron pipe with Brass Cap stamped ~~652737~~ RCE 5982
corrected by surveyor
by telephone on 10/23/74

PHYSICAL DESCRIPTION OF MONUMENTS REBUILT OR PERPETUATED:

CALIFORNIA COORDINATE SYSTEM ORDER: FIRST SECOND THIRD
STATIONS USED: NOS (USC & GS) STATE COUNTY OTHER STATION _____
STATION _____ ZONE _____ ELEVATION _____ NORTHINGS (Y) _____
EASTINGS (X) _____

SKETCH: (INCLUDE REFERENCE TIE OR WITNESS POINTS, REMARKS AND TOPO OF AREA)



SURVEYOR'S CERTIFICATE
THIS CORNER RECORD WAS PREPARED BY ME OR UNDER MY DIRECTION IN CONFORMANCE WITH THE LAND SURVEYORS ACT ON Oct 7 19 74

SIGNED: [Signature]
L.S. or R.C.E. No.: 152426
CHARLES VICTOR SIBBAL
NO. 4126
STATE OF CALIFORNIA

COUNTY SURVEYOR'S CERTIFICATE
THE CORNER RECORD WAS RECEIVED Oct 15 1974 and examined and filed Oct. 24, 1974
BY: Albert O. Grote
TITLE: County Engineer

DOCUMENT No. 74-25-1
STATEMENT ON BACK OF SHEET
YES NO