

CORNER RECORD

County of MADERA T. 6 South R. 20 East  MDB 1/2 Meridian California

Corner Type: Govt. Corner  Meander  Rancho  Other

Corner Identification SW 23 1/2 Date of Visit Sept 19 76



Corner  Left as Found  Found and Tagged  Reestablished  Obliterated Corner  Rebuilt   
BY ME ON PREVIOUS SURVEY

Physical Description of Corner Found; Evidence and Method used to Identify or reestablish  
1 1/2" Iron pipe tagged RCE 21650

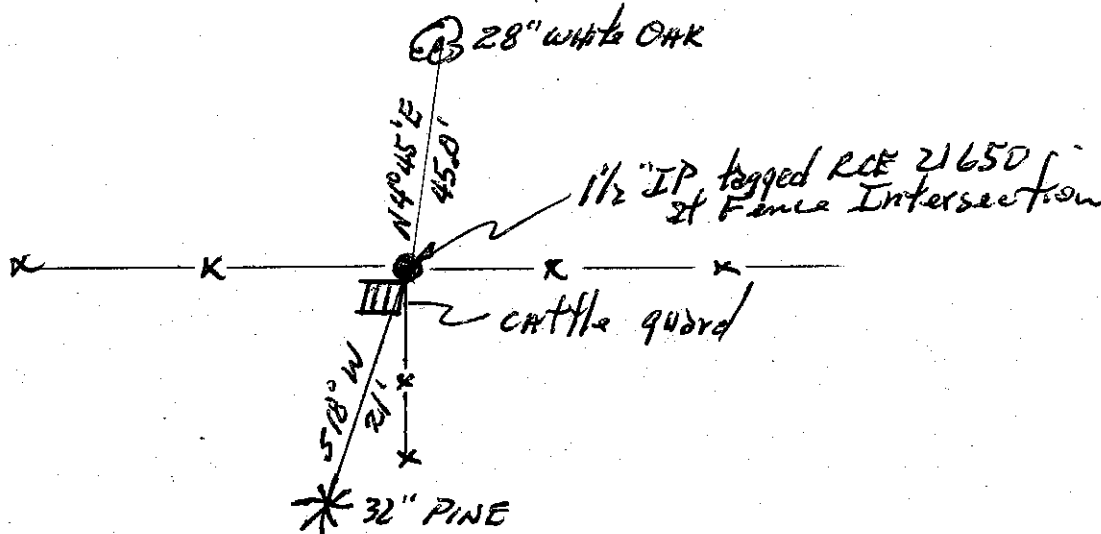
Physical Description of Monuments Rebuilt or Perpetuated

California Coordinate System Order: First  Second  Third

Stations used: NOS (USC & GS)  State  County  Other  Station \_\_\_\_\_ Station \_\_\_\_\_

Zone \_\_\_\_\_ Elevation \_\_\_\_\_ Northings (Y) \_\_\_\_\_ Eastings (X) \_\_\_\_\_

SKETCH: (Include reference tie or witness points, remarks and topo of area)



SURVEYOR'S CERTIFICATE

This corner record was prepared by me or under my direction in conformance with the Land Surveyors Act on Sept 19 76.

Signed: Joseph C. Smith RCE 21650

L.S. or R.C.E. No.:

COUNTY SURVEYOR'S CERTIFICATE

The Corner Record was received Sept. 16 1976 and examined and filed Sept 22 1976.

By: A. Broto  
 Title County Engineer

Document No. 76-20-4