

CORNER RECORD

County of MADERA T. 6 SOUTH R. 20 EAST MDB Meridian California

Corner Type: Govt. Corner Meander Rancho Other

Corner Identification NW 23 1/2 Date of Visit Sept 19 76



Corner Left as Found Found and Tagged Reestablished Obliterated Corner Rebuilt
ON PREVIOUS SURVEY BY ME

Physical Description of Corner Found; Evidence and Method used to Identify or reestablish
2" IRON PIPE TAGGED RCE 21650 IN ROCK MOUND (COVERED) - SET BY ME PREVIOUSLY

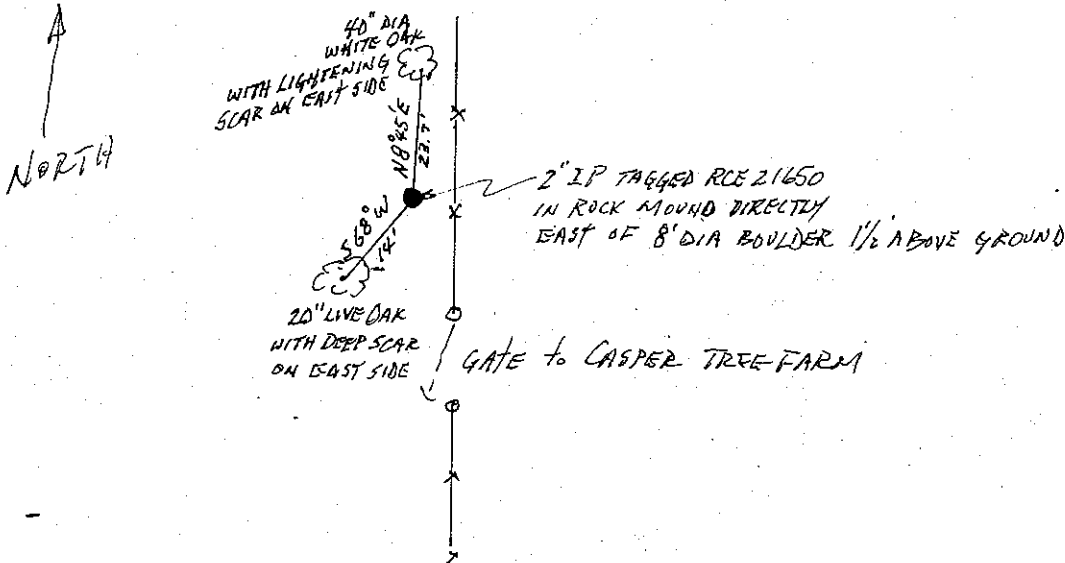
Physical Description of Monuments Rebuilt or Perpetuated

California Coordinate System Order: First Second Third

Stations used: NOS (USC & GS) State County Other Station ___ Station ___

Name ___ Elevation ___ Northings (Y) ___ Eastings (X) ___

SKETCH: (Include reference tie or witness points, remarks and topo of area)



SURVEYOR'S CERTIFICATE

This corner record was prepared by me or under my direction in conformance with the Land Surveyors Act on Sept 1976.

Signed: Joseph C. Sneyd RCE 21650

L.S. No. P.C.E. No.

COUNTY SURVEYOR'S CERTIFICATE

The Corner Record was received Sept. 16 1976 and examined and filed Sept 22 1976.

By: A. Grote
 Title County Engineer

Document No. 76-26-2