

CORNER RECORD

County of MADERA T. 6S R. 20E MPBTM Meridian California

Corner Type: Govt. Corner Meander Rancho Other

Corner Identification C/4 COR Date of Visit SEPT 19 75



SEC. 13

Corner Left as Found Found and Tagged Reestablished Obliterated Corner Rebuilt

Physical Description of Corner Found; Evidence and Method used to Identify or reestablish
PND 1" IP SET BY LS 2854 & TAGGED (SEE RECORD OF SURVEY V16 OF MAPS
LYING 39.7 feet S. of E/W Fence Line - P127 MCR

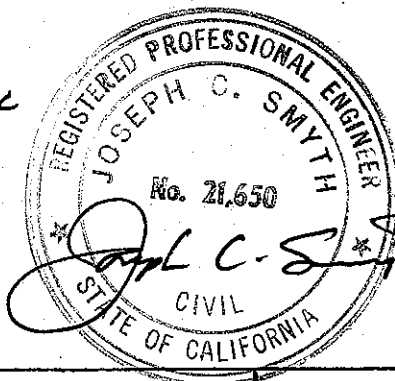
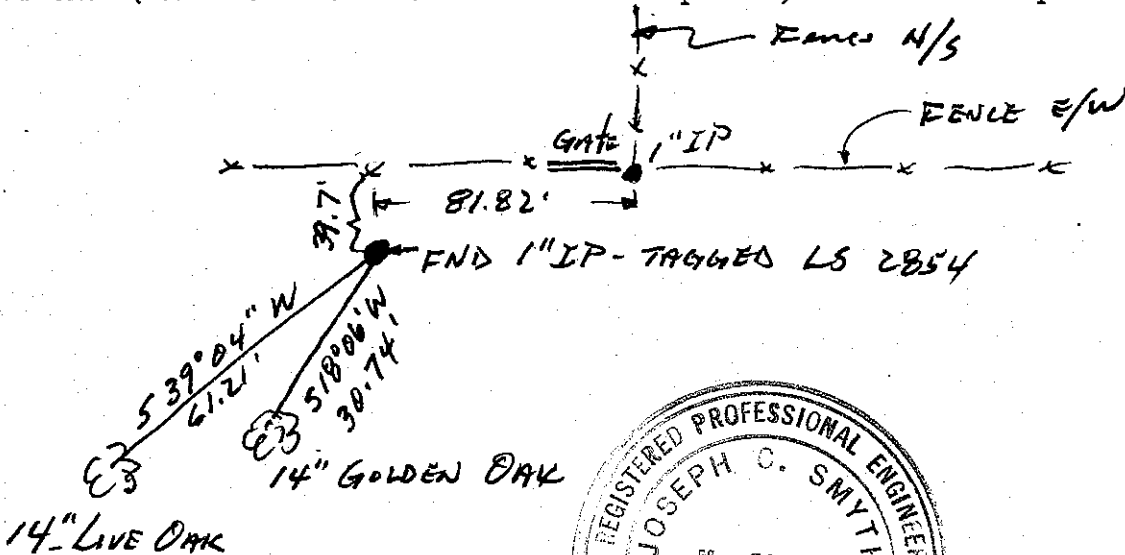
Physical Description of Monuments Rebuilt or Perpetuated
TIED IN TWO WITNESS TREES TO EXISTING CORNER (SEE SKETCH BELOW)

California Coordinate System Order: First Second Third

Stations used: NOS (USC & GS) State County Other Station _____ Station _____

Zone _____ Elevation _____ Northings (Y) _____ Eastings (X) _____

SKETCH: (Include reference tie or witness points, remarks and topo of area)



SURVEYOR'S CERTIFICATE

This corner record was prepared by me or under my direction in conformance with the Land Surveyors Act on Sept 1975.

Signed: Joseph C. Smyth

L.S. or R.C.E. No.:

COUNTY SURVEYOR'S CERTIFICATE

The Corner Record was received OCT. 28 1975 and examined and filed Oct 31 1975.

By: A. Grote
 Title County Engineer

Document No. 75-36-01