

# CORNER RECORD

City of Beasore Document Number \_\_\_\_\_  
County of Madera, California  
Brief Legal Description Lots 5 & 6 and that portion of Lots 7 & 8 lying easterly of the creek in Block 4 of Beasore Meadows Subdivision No. 1, as Recorded in Bk 05 of Maps at Pg 21, MCR

Section 32  
T5S, R23E,  
MDM

### CORNER TYPE

Government Corner  Control   
Meander  Property   
Rancho  Other   
Date of Survey 07/10/08

### COORDINATES (Optional)

N. \_\_\_\_\_  
E. \_\_\_\_\_  
Zone \_\_\_\_\_ NAD27  NAD83  
NAD83 Epoch \_\_\_\_\_  
Elevation \_\_\_\_\_  
Vert Datum: NGVD29  NADV88   
Meas. Units: Metric  Imperial

Corner - Left as found  Found and tagged  Established  Reestablished  Rebuilt

### Identification and type of corner found: Evidence used to identify or procedure used to establish or reestablish the corner:

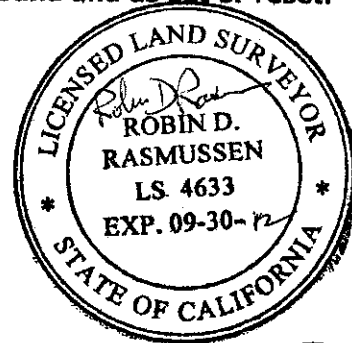
Found and accepted 5/8" iron pipes with no tags, or monuments as noted.  
Established missing corner monument using the monuments found and bearings and distances as shown on the record map. (See sketch, page 2)

### A description of the physical condition of the monument as found and as set or reset:

Set 3/4" x 30" iron pipe tagged LS4633 up 2" See sketch, Page 2)

### SURVEYOR'S STATEMENT

This Corner Record was prepared by me or under my direction in conformance with the Land Surveyor's Act on January 12, 2012  
Signed Robin D. Rasmussen PLS No: 4633



### COUNTY SURVEYOR'S STATEMENT

This Corner Record was received 2/10 2012 and examined and filed 2/27 2012  
Signed David M. McGlasson PLS No: 6968  
Title Acting County Surveyor



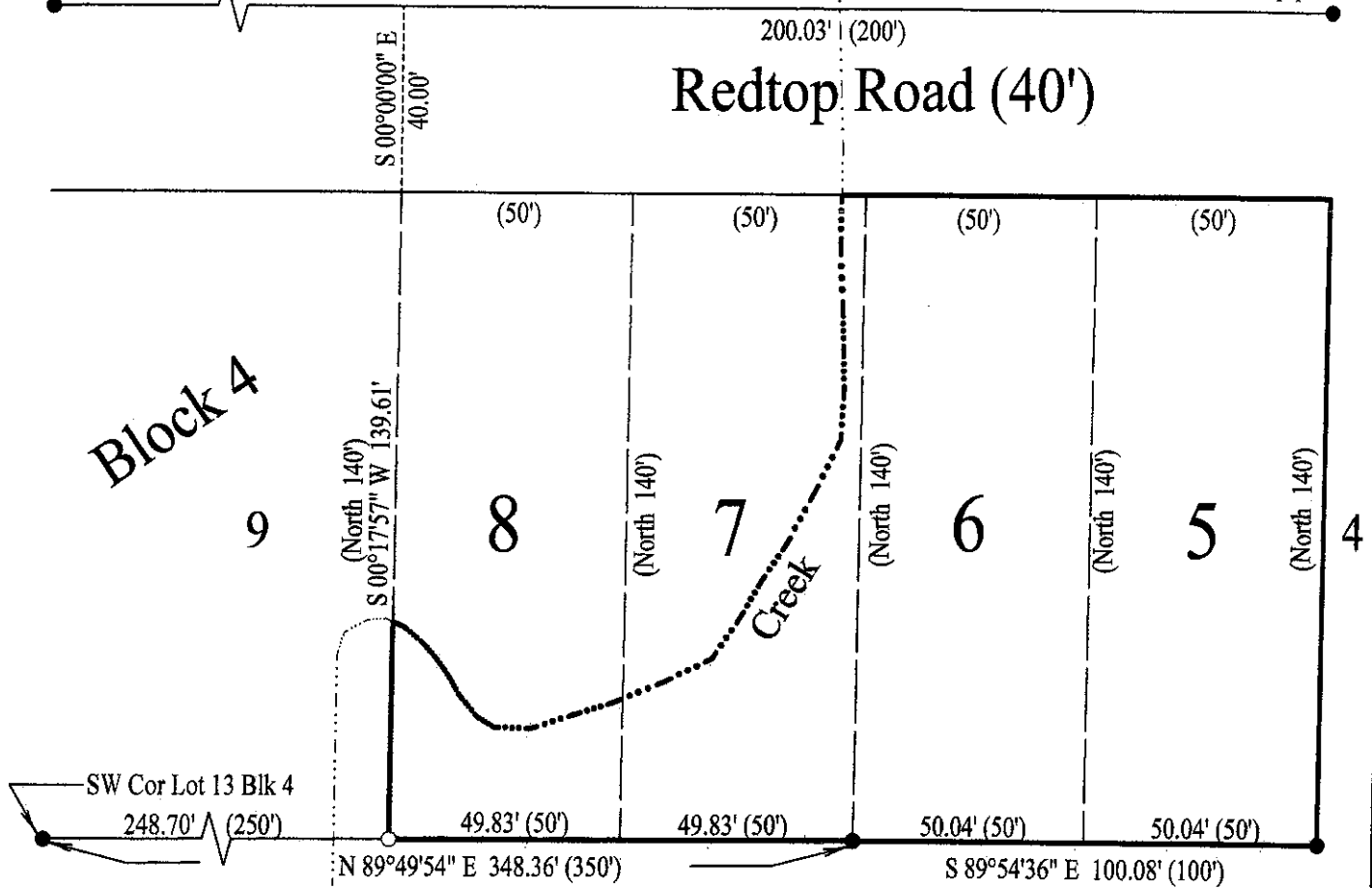
### County Surveyor's Comment

SW Cor Lot 43 Blk 3  
Found 3/4" iron pipe

Basis of Bearings

N 90°00'00" E 300.04' (300')

SE Cor Lot 48 Blk 3  
Found 1" iron pipe



Legend

- Found and accepted 5/8" iron pipe, or monument as noted
- (...) Record data per plat of Beasore Meadows Subdivision No. 1, Bk 5 of Maps, Pg 21, MCR
- Set 3/4" x 30" iron pipe tagged LS4633 up 2"

Basis of Bearings

Bearings are based on the north line of Redtop Road as shown on plat of Beasore Meadows Subdivision No. 1, Bk 5 of Maps, Pg 21, MCR, which bears N 90°00'00" E

**CORNER RECORD**

Of Lots 5 and 6 and that portion of Lots 7 and 8 lying easterly of the creek in Block 4 of Beasore Meadows Subdivision No. 1 Book 5 of Maps, at Page 21, MCR, Madera County, California