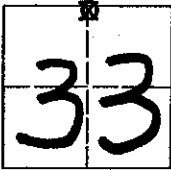


CORNER RECORD

COUNTY OF MADERA TOWNSHIP 5 SOUTH, RANGE 23 EAST, M.D.B.&M. CALIFORNIA

CORNER TYPE: GOV'T. CORNER [X] MEANDER [ ] RANCHO [ ] CONTROL [ ] OTHER [ ]

CORNER IDENTIFICATION - DATE OF VISIT: September 19 73



NORTH 1/4 CORNER OF SECTION 33, 5/23.

CORNER - LEFT AS FOUND [ ] FOUND AND TAGGED [ ] REESTABLISHED OBLITERATED CORNER [ ] REBUILT [X]

PHYSICAL DESCRIPTION OF CORNER FOUND; EVIDENCE AND METHOD USED TO IDENTIFY OR REESTABLISH

Found rock mound and bearing tree.

PHYSICAL DESCRIPTION OF MONUMENTS REBUILT OR PERPETUATED

Set 3/4" Iron Pipe tagged "RCE 12406".

CALIFORNIA COORDINATE SYSTEM ORDER: FIRST [ ] SECOND [ ] THIRD [ ]

STATIONS USED: NGS (USC & GS) [ ] STATE [ ] COUNTY [ ] OTHER [ ] STATION \_\_\_\_\_ STATION \_\_\_\_\_

ZONE \_\_\_\_\_ ELEVATION \_\_\_\_\_ NORTHINGS (Y) \_\_\_\_\_ EASTINGS (X) \_\_\_\_\_

SKETCH: (INCLUDE REFERENCE TIE OR WITNESS POINTS, REMARKS AND TOPO OF AREA)

Note: Copied from Parcel Map 664  
Surveyed by R.W. Greenwood, RCE 12406

VOL 19 PAGE 142

SURVEYOR'S CERTIFICATE

THIS CORNER RECORD WAS PREPARED BY ME OR UNDER MY DIRECTION IN CONFORMANCE WITH THE LAND SURVEYOR'S ACT ON \_\_\_\_\_ 19\_\_\_\_.

SIGNED: \_\_\_\_\_

L.S. or R.C.E. No: \_\_\_\_\_

SEAL

COUNTY SURVEYOR'S CERTIFICATE

THE CORNER RECORD WAS RECEIVED \_\_\_\_\_ 19\_\_\_\_

AND EXAMINED AND FILED \_\_\_\_\_ 19\_\_\_\_.

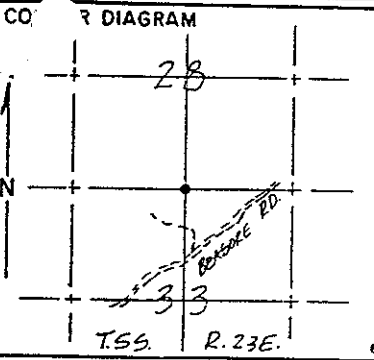
BY: \_\_\_\_\_

TITLE: \_\_\_\_\_

DOCUMENT No: \_\_\_\_\_  
STATEMENT ON BACK OF SHEET: YES [ ] NO [ ]

N 1/4 Cor 33

T. \_\_\_\_\_ R. \_\_\_\_\_ R.D. \_\_\_\_\_ County \_\_\_\_\_  
Merid. \_\_\_\_\_ N.F. \_\_\_\_\_ State \_\_\_\_\_



1 DESCRIBE CORNER MONUMENT FOUND  
Found 5/8" rebar L.S. 4298 in a rock mound.

2 DESCRIBE BEARING TREES OR OTHER OFFICIAL ACCESSORIES FOUND  
Found a 30" y. pine (North 16° East, 21.12') and cut open to expose scribing. Also found a rotten stump (South 84° West, 29.04') and accepted.

3 DESCRIBE CORNER LOCATION RELATIVE TO NEAR-BY FEATURES, ALSO HOW TO REACH CORNER  
Go north on Beasore Road approximately 1 mile past Road 6S01. Turn northwesterly on logging road approximately 500' to C-North 1/16 corner on south side of road. Proceed north along cleared, posted line to corner.

6 PHOTO IDENTIFICATION DATA  
Photo No. \_\_\_\_\_  
Filed At. \_\_\_\_\_  
Object Ident. \_\_\_\_\_  
Ident. By \_\_\_\_\_  
Signature \_\_\_\_\_

7 PLANE COORDINATE POSITION DATA  
State \_\_\_\_\_ Zone \_\_\_\_\_  
X \_\_\_\_\_  
Y \_\_\_\_\_  
Estab. By \_\_\_\_\_  
Agency \_\_\_\_\_

Signature \_\_\_\_\_ Title \_\_\_\_\_ Division \_\_\_\_\_ Headquarters \_\_\_\_\_ Date \_\_\_\_\_ FS-7100-52 (3/68)

CORNER RECORD (PERPETUATION)

8 MONUMENT: DESCRIBE NEW MONUMENT SET, OR WORK DONE TO PRESERVE EXISTING MONUMENT

Reset with U.S.F.S. monument in rock mound marked 1/4 corner Section 28 and section 33, Township 5 South, Range 23 East.

9 ACCESSORIES DESCRIBE NEW BT'S WITNESS OBJECTS ETC. ESTABLISHED, OR WORK DONE TO PRESERVE EXISTING EVIDENCE

I blazed a 22" y. pine South 45° East, 23.67' and a 20" y. pine South 32° West, 39.60'.

10 Work Done By Jones Title Surveyor Date \_\_\_\_\_ State Registration No. LS 4298  
or Agency \_\_\_\_\_

11 Certified Cor. Record Prepared? Yes \_\_\_\_\_ No \_\_\_\_\_ Filed At: \_\_\_\_\_ Date \_\_\_\_\_

REMARKS

0523