

Index File No. \_\_\_\_\_

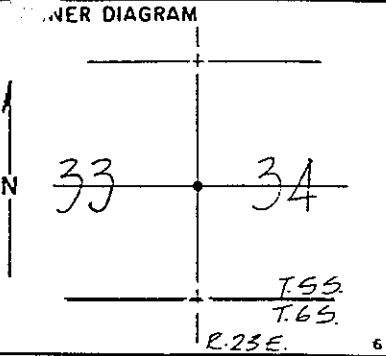
CORNER RECORD (SEARCH)  
(Ref: FSM 7151.4)

Tract or Survey No. \_\_\_\_\_ Cor. No. \_\_\_\_\_

E 1/4 33

T. \_\_\_\_\_ R. \_\_\_\_\_ R.D. \_\_\_\_\_ County \_\_\_\_\_

Id. \_\_\_\_\_ N.F. \_\_\_\_\_ State \_\_\_\_\_



DESCRIBE CORNER MONUMENT FOUND

Found 3/4" I.P. tagged RCE 12406 in a rock mound.

DESCRIBE BEARING TREES OR OTHER OFFICIAL ACCESSORIES FOUND

Found a 36" Y. pine open with scribing visible S 70°E (S. 70°E) and remains of old B.T. with K-tag 1963 in same, N 85+ W. 13.20+.

PHOTO IDENTIFICATION DATA

Photo No. \_\_\_\_\_  
 Filed At. \_\_\_\_\_  
 Object Ident. \_\_\_\_\_  
 Ident. By \_\_\_\_\_  
*Signature*

DESCRIBE CORNER LOCATION RELATIVE TO NEAR-BY FEATURES, ALSO HOW TO REACH CORNER

From Beasore Road turn east on 6S01 for approximately 1 mile to old stock trail. Turn north; cross creek and continue northerly for approximately 1/2 mile. Corner is east of stock trail approximately 400'.

PLANE COORDINATE POSITION DATA

State \_\_\_\_\_ Zone \_\_\_\_\_  
 X \_\_\_\_\_  
 Y \_\_\_\_\_  
 Estab. By \_\_\_\_\_  
*Agency*

Signature \_\_\_\_\_ Title \_\_\_\_\_ Division \_\_\_\_\_ Headquarters \_\_\_\_\_ Date \_\_\_\_\_ FS-7100-52 (3/68)

CORNER RECORD (PERPETUATION)

MONUMENT: DESCRIBE NEW MONUMENT SET, OR WORK DONE TO PRESERVE EXISTING MONUMENT

Reset with a U.S.F.S. monument in a rock mound marked 1/4 corner to Section 33 and Section 34, Township 8 South, Range 23 East.

ACCESSORIES: DESCRIBE NEW BY'S WITNESS OBJECTS ETC. ESTABLISHED, OR WORK DONE TO PRESERVE EXISTING EVIDENCE

I blazed a 20" tamarack, North 44° East, 20.40', a 12" tamarack South 12° East, 12.30' and a 12" tamarack South 60° West, 22.60 feet. I set a U.S.F.S. post North 45° West, 4.0'.

Work Done By: Jones Title: Surveyor Date \_\_\_\_\_ State Registration No. or Agency: LS 4298

Certified Cor. Record Prepared? Yes No Filed At. \_\_\_\_\_ Date \_\_\_\_\_

REMARKS