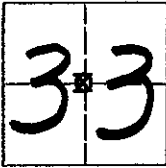


CORNER RECORD

COUNTY OF MADERA TOWNSHIP 5 SOUTH, RANGE 23 EAST, M.D.B.&M. CALIFORNIA

CORNER TYPE: GOV'T. CORNER MEANDER RANCHO CONTROL OTHER

CORNER IDENTIFICATION - DATE OF VISIT: September 19 73



CENTER OF SECTION 33, 5/23.

CORNER - LEFT AS FOUND FOUND AND TAGGED REESTABLISHED OBLITERATED CORNER REBUILT

PHYSICAL DESCRIPTION OF CORNER FOUND; EVIDENCE AND METHOD USED TO IDENTIFY OR REESTABLISH

Corner set by line-line intersection between the 4 1/4 corners.

PHYSICAL DESCRIPTION OF MONUMENTS REBUILT OR PERPETUATED

Set 3/4" Iron Pipe tagged "RCE 12406".

CALIFORNIA COORDINATE SYSTEM ORDER: FIRST SECOND THIRD

STATIONS USED: NGS (USC & GS) STATE COUNTY OTHER STATION _____ STATION _____

ZONE _____ ELEVATION _____ NORTHINGS (Y) _____ EASTINGS (X) _____

SKETCH: (INCLUDE REFERENCE TIE OR WITNESS POINTS, REMARKS AND TOPO OF AREA)

Note: Copied from Parcel Map 664
Surveyed by R.W. Greenwood, RCE 12406

VOL 19 PAGE 142

SURVEYOR'S CERTIFICATE

THIS CORNER RECORD WAS PREPARED BY ME OR UNDER MY DIRECTION IN CONFORMANCE WITH THE LAND SURVEYOR'S ACT ON _____ 19 _____.

SIGNED: _____

L.S. or R.C.E. No: _____

SEAL

COUNTY SURVEYOR'S CERTIFICATE

THE CORNER RECORD WAS RECEIVED _____ 19 _____

AND EXAMINED AND FILED _____ 19 _____.

BY: _____

TITLE: _____

DOCUMENT No: _____
STATEMENT ON BACK OF SHEET: YES NO

C 1/4 33

USDA REST SERVICE

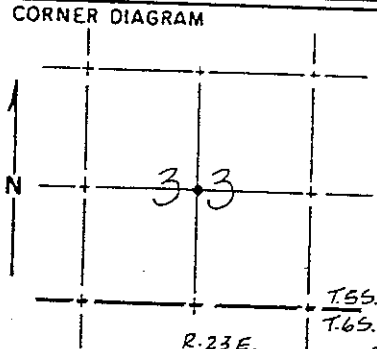
Index File No. _____

CORNER RECORD (SEARCH)
(Ref. FSM 7151.4)

Tract or Survey No. _____ Cor. No. _____

T. _____ R. _____ R.D. _____ County _____

Merid. _____ N.F. _____ State _____



DESCRIBE CORNER MONUMENT FOUND

None found

DESCRIBE BEARING TREES OR OTHER OFFICIAL ACCESSORIES FOUND

None found.

PHOTO IDENTIFICATION DATA

Photo No. _____

Filed At. _____

Object Ident. _____

Ident. By _____

Signature _____

PLANE COORDINATE POSITION DATA

State _____ Zone _____

X _____

Y _____

Estab. By _____

Agency _____

Signature _____

DESCRIBE CORNER LOCATION RELATIVE TO NEAR-BY FEATURES, ALSO HOW TO REACH CORNER

Go north on Beasore Road approximately 8/10 mile past Road 6S01 to posted, cleared line leading east approximately 900' to corner on top of a knoll.

Title _____ Division _____ Headquarters _____ Date _____

FS-7100-52 (3/68)

CORNER RECORD (PERPETUATION)

MONUMENT: DESCRIBE NEW MONUMENT SET, OR WORK DONE TO PRESERVE EXISTING MONUMENT

Set U.S.F.S. monument in rock mound marked center 1/4 corner, Section 33, Township 5 South, Range 23 East.

ACCESSORIES: DESCRIBE NEW BT'S WITNESS OBJECTS ETC. ESTABLISHED, OR WORK DONE TO PRESERVE EXISTING EVIDENCE

I blazed a 19" y. pine North 40° East, 30.59' and a 21" y. pine South 36° East, 31.95'. I measured North 70° West, 52.17' to a 3/4" I.P. RCE 12406. I set a U.S.F.S. post North 20° East, 4.0'.

Work Done By Jones Title Surveyor Date _____ State Registration No. LS 4298 or Agency _____

Certified Cor. Record Prepared? Yes No Filed At: _____ Date _____

REMARKS

0523