

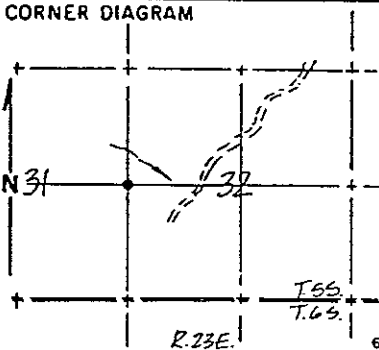
Index File No.

CORNER RECORD (SEARCH)  
(Ref. FSM 7151.4)

Tract or Survey No.

W 1/4 32  
Cor. No.

T. \_\_\_\_\_ R. \_\_\_\_\_ R.D. \_\_\_\_\_ County \_\_\_\_\_  
Merid. \_\_\_\_\_ N.F. \_\_\_\_\_ State \_\_\_\_\_



DESCRIBE CORNER MONUMENT FOUND  
Found scattered remains of rock mound.

DESCRIBE BEARING TREES OR OTHER OFFICIAL ACCESSORIES FOUND  
Found 37" s. pine (South 75° East, 29.70') and cut open to expose scribing. Measured South 55° East, 29.3'. Found 31" y. pine (North 83° West, 29.04') and accepted heal as original B.T. without cutting open.

PHOTO IDENTIFICATION DATA  
Photo No. \_\_\_\_\_  
Filed At. \_\_\_\_\_  
Object Ident. \_\_\_\_\_  
Ident. By \_\_\_\_\_  
Signature \_\_\_\_\_

DESCRIBE CORNER LOCATION RELATIVE TO NEAR-BY FEATURES, ALSO HOW TO REACH CORNER  
Proceed as to southwest corner Section 32, Township 5 South, Range 23 East. Approx. 1/2 mile before end of road on the west side of the road there is a loading clearing north of a creek. Follow creek up to saddle. Turn south approximately 800' over a ridge to corner.

PLANE COORDINATE POSITION DATA  
State \_\_\_\_\_ Zone \_\_\_\_\_  
X \_\_\_\_\_  
Y \_\_\_\_\_  
Estab. By \_\_\_\_\_  
Agency \_\_\_\_\_

Signature \_\_\_\_\_ Title \_\_\_\_\_ Division \_\_\_\_\_ Headquarters \_\_\_\_\_ Date \_\_\_\_\_ FS-7100-52 (3/68)

CORNER RECORD (PERPETUATION)

MONUMENT: DESCRIBE NEW MONUMENT SET, OR WORK DONE TO PRESERVE EXISTING MONUMENT

Reset with a U.S.F.S. monument in a rock mound marked 1/4 corner, Section 31 and Section 32, Township 5 South, Range 23 East.

ACCESSORIES: DESCRIBE NEW BT'S WITNESS OBJECTS ETC. ESTABLISHED, OR WORK DONE TO PRESERVE EXISTING EVIDENCE

I blazed a 22" y. pine, North 65° East, 52.35'. I set a U.S.F.S. post South 45° West, 4.0'.

Work Done By Jones Title Surveyor Date \_\_\_\_\_ State Registration No. or Agency LS 4298

Certified Cor. Record Prepared? Yes  No  Filed At \_\_\_\_\_ Date \_\_\_\_\_

REMARKS

Index File No. \_\_\_\_\_ T. \_\_\_\_\_ R. \_\_\_\_\_ M. \_\_\_\_\_ Tract \_\_\_\_\_ Surv. No. \_\_\_\_\_ Cor. \_\_\_\_\_