

314 32

USDA-FOREST SERVICE

CORNER RECORD (SEARCH)  
(Ref. FSM 7151.4)

Tract or  
Survey No. \_\_\_\_\_

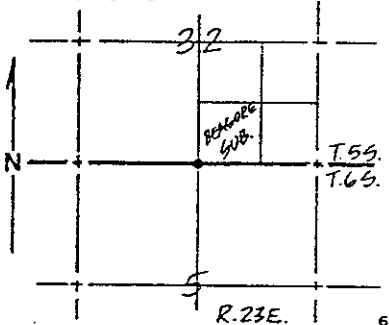
Cor.  
No. \_\_\_\_\_

Index  
File No. \_\_\_\_\_

T. \_\_\_\_\_ R. \_\_\_\_\_ R.D. \_\_\_\_\_ County \_\_\_\_\_

M. \_\_\_\_\_ N.F. \_\_\_\_\_ State \_\_\_\_\_

CORNER DIAGRAM



DESCRIBE CORNER MONUMENT FOUND

Found 1 1/2" I.P.

DESCRIBE BEARING TREES OR OTHER OFFICIAL ACCESSORIES FOUND

None found

PHOTO IDENTIFICATION DATA

Photo No. \_\_\_\_\_

Filed At. \_\_\_\_\_

Object Ident. \_\_\_\_\_

Ident. By \_\_\_\_\_

Signature

PLANE COORDINATE POSITION DATA

State \_\_\_\_\_ Zone \_\_\_\_\_

X \_\_\_\_\_

Y \_\_\_\_\_

Estab. By \_\_\_\_\_

Agency

Signature

Title

Division

Headquarters

Date

FS-7100-52 (3/68)

MONUMENT: DESCRIBE NEW MONUMENT SET, OR WORK DONE TO PRESERVE EXISTING MONUMENT

Reset with U.S.F.S monument in rock mound marked 1/4 corner, Section 32, Township 5 South, Range 23 East and Section 5, Township 6 South, Range 23 East.

ACCESSORIES: DESCRIBE NEW BT'S WITNESS OBJECTS ETC. ESTABLISHED, OR WORK DONE TO PRESERVE EXISTING EVIDENCE

I blazed a 22" tamarack North 47° East, 43.91', a 13" tamarack North 88° East, 12.11' and a 14" tamarack, North 88° West, 18.57'. I set a U.S.F.S. post North 45° West, 4.0'.

Work Done By Jones Title Surveyor

Date \_\_\_\_\_

State Registration No. LS 4298  
or Agency \_\_\_\_\_

Certified Cor. Record Prepared? Yes

No

Filed At: \_\_\_\_\_

Date \_\_\_\_\_

REMARKS

Index File No. \_\_\_\_\_

T. \_\_\_\_\_

R. \_\_\_\_\_

M. \_\_\_\_\_

Tract or Surv. No. \_\_\_\_\_

Cor. \_\_\_\_\_

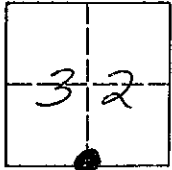
S 1/4 32

CORNER RECORD

COUNTY OF MADERA TOWNSHIP S SOUTH, RANGE 23 EAST, M.D.B.&M. CALIFORNIA

CORNER TYPE: GOV'T. CORNER  MEANDER  RANCHO  CONTROL  OTHER

CORNER IDENTIFICATION - DATE OF VISIT: SEPT 19 24



S 1/4 COR SEC. 32 5/23

CORNER - LEFT AS FOUND  FOUND AND TAGGED  REESTABLISHED  OBLITERATED CORNER  REBUILT

PHYSICAL DESCRIPTION OF CORNER FOUND; EVIDENCE AND METHOD USED TO IDENTIFY OR REESTABLISH

1 1/2 GAL. PIPE

PHYSICAL DESCRIPTION OF MONUMENTS REBUILT OR PERPETUATED

CALIFORNIA COORDINATE SYSTEM ORDER: FIRST  SECOND  THIRD

STATIONS USED: NGS (USC & GS)  STATE  COUNTY  OTHER  STATION \_\_\_\_\_ STATION \_\_\_\_\_

ZONE \_\_\_\_\_ ELEVATION \_\_\_\_\_ NORTHINGS (Y) \_\_\_\_\_ EASTINGS (X) \_\_\_\_\_

SKETCH: (INCLUDE REFERENCE TIE OR WITNESS POINTS, REMARKS AND TOPO OF AREA)

ALL ORIGINAL B.T. STANDING

J.O. RUE

**SURVEYOR'S CERTIFICATE**  
THIS CORNER RECORD WAS PREPARED BY ME OR UNDER MY DIRECTION IN CONFORMANCE WITH THE LAND SURVEYOR'S ACT ON \_\_\_\_\_ 19\_\_\_\_.  
SIGNED: \_\_\_\_\_  
L.S. or R.C.E. No: \_\_\_\_\_

**COUNTY SURVEYOR'S CERTIFICATE**  
THE CORNER RECORD WAS RECEIVED \_\_\_\_\_ 19\_\_\_\_  
AND EXAMINED AND FILED \_\_\_\_\_ 19\_\_\_\_.  
BY: \_\_\_\_\_  
TITLE: \_\_\_\_\_  
DOCUMENT NO: \_\_\_\_\_  
CORNER ON BACK OF SHEET? YES  NO