

Index File No. \_\_\_\_\_

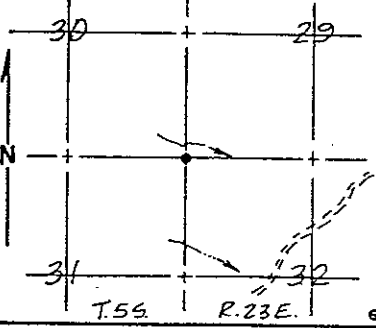
CORNER RECORD (SEARCH)  
(Ref. FSM 7151.4)

Tract or Survey No. \_\_\_\_\_ Cor. No. \_\_\_\_\_

T. \_\_\_\_\_ R. \_\_\_\_\_ R.D. \_\_\_\_\_ County \_\_\_\_\_

Merid. \_\_\_\_\_ N.F. \_\_\_\_\_ State \_\_\_\_\_

CORNER DIAGRAM



DESCRIBE CORNER MONUMENT FOUND

Found a good rock mound.

DESCRIBE BEARING TREES OR OTHER OFFICIAL ACCESSORIES FOUND

Found original B.T.'s as per Government Notes.  
 A 10" fir, North 75° East, 21.78'  
 A 40" fir, South 49° East, 34.32'  
 A 12" fir, South 35° West, 40.26'  
 A 8" fir, North 32° West, 9.90'

PHOTO IDENTIFICATION DATA

Photo No. \_\_\_\_\_  
 Filed At. \_\_\_\_\_  
 Object Ident. \_\_\_\_\_  
 Ident. By \_\_\_\_\_  
*Signature*

DESCRIBE CORNER LOCATION RELATIVE TO NEAR-BY FEATURES, ALSO HOW TO REACH CORNER

Proceed as to West ¼ corner, Section 32, Township 5 South, Range 23 East at saddle. Turn north and ascend on side slope approximately 1800' to corner. Corner falls at the base of a rock strewn mountain to the west and south of a small creek.

PLANE COORDINATE POSITION DATA

State \_\_\_\_\_ Zone \_\_\_\_\_  
 X \_\_\_\_\_  
 Y \_\_\_\_\_  
 Estab. By \_\_\_\_\_  
*Agency*

Signature \_\_\_\_\_ Title \_\_\_\_\_ Division \_\_\_\_\_ Headquarters \_\_\_\_\_ Date \_\_\_\_\_ FS-7100-52 (3/68)

MONUMENT: DESCRIBE NEW MONUMENT SET, OR WORK DONE TO PRESERVE EXISTING MONUMENT

No Improvements made.

ACCESSORIES: DESCRIBE NEW BT'S WITNESS OBJECTS ETC. ESTABLISHED, OR WORK DONE TO PRESERVE EXISTING EVIDENCE

No Improvements made.

Work Done By Jones Title Surveyor Date \_\_\_\_\_ State Registration No. LS 4298  
 or Agency \_\_\_\_\_

Certified Cor. Record Prepared? Yes  No  Filed At: \_\_\_\_\_ Date \_\_\_\_\_

REMARKS