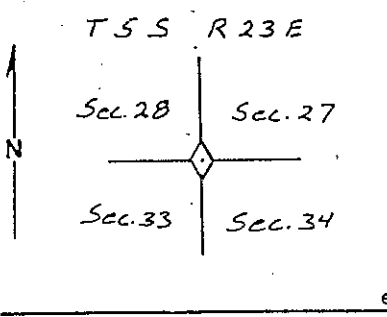


Index File No. V-13 CORNER RECORD (SEARCH) (Ref. FSM 7151.4) Tract or Survey No. \_\_\_\_\_ Cor. No. \_\_\_\_\_  
 T 5 S. R. 23 E. R.D. Minarets County Madera  
 Merid. M.D.B.&M. N.F. Sierra State California

6 CORNER DIAGRAM



7 DESCRIBE CORNER MONUMENT FOUND

(See references)  
 Record: A 4" dia. post in a rock mound 5' at the base and 3' high, per field notes of J.M. Anderson, U.S. Deputy Surveyor 1881.  
 Found and Accepted: A 1" O.D.I.P., up 12" (LS 4727) in a rk. md.

8 DESCRIBE BEARING TREES OR OTHER OFFICIAL ACCESSORIES FOUND

Record: A Yellow Pine 44" dia. N 46 E 43.6'.  
 Found: A Pine stump 60" dia. N 46 59' E 39.60'.  
 Record: A Yellow Pine 16" dia. S 85 E 28.4'.  
 Found: A Yellow Pine 44" dia. S 81 00' E 32.25' (Scribing Visible)

9 PHOTO IDENTIFICATION DATA

Photo No. \_\_\_\_\_  
 Filed At. \_\_\_\_\_  
 Object Ident. \_\_\_\_\_  
 Ident. By \_\_\_\_\_  
 Signature \_\_\_\_\_

Found no evidence of the 2 other original BT's. (See References)

10 DESCRIBE CORNER LOCATION RELATIVE TO NEAR-BY FEATURES, ALSO HOW TO REACH CORNER

The corner lies on the N'ly side of a large rock outcrop.  
 Fences run north, east, and south from the corner.

11 PLANE COORDINATE POSITION DATA

State \_\_\_\_\_ Zone \_\_\_\_\_  
 X \_\_\_\_\_  
 Y \_\_\_\_\_  
 Estob. By \_\_\_\_\_  
 Agency \_\_\_\_\_

Signature Jeff Sub Title Land Surveyor Division Cadastral Headquarters S.O. Date 8/15/85 FS-7100-52 (3/68)

CORNER RECORD (PERPETUATION)

12 MONUMENT: DESCRIBE NEW MONUMENT SET, OR WORK DONE TO PRESERVE EXISTING MONUMENT

Remonumented found monument with F.S.M., up 8". Rebuilt found rock mound 4 1/2' x 3' x 1' high around F.S.M. Placed found pipe inside F.S.M. Set a metal post with Forest Service monument signs attached 4' ± NW of the corner. (See References)

13 ACCESSORIES: DESCRIBE NEW BT'S WITNESS OBJECTS ETC. ESTABLISHED, OR WORK DONE TO PRESERVE EXISTING EVIDENCE

Established 5 new corner ties.  
 (See References)

der the direction of Work Done By Howard Cohen Title Forest Surveyor Date 8/15/85 State Registration No. or Agency LS 4689

Certified Cor. Record Prepared?  Yes  No Filed At: Madera County Surveyor's Office

REMARKS

References: Job No. 85-9 Mugler's Meadow Field Book 34 P 67 Field Book 34 P 73 State Corner Record  
 Field Crew: Frank Lynch Claude Reeves George Kramer Marvin Reid

Index File No. V-13

CORNER RECORD (SEARCH)  
(Ref. FSM 7151.4)

Tract or Survey No. \_\_\_\_\_  
Cor. No. 33 34

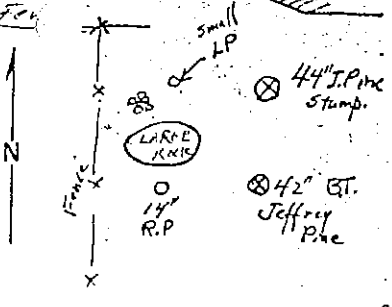
T. 55 R. R 23E

R.D. Minerals County Madera

Merid. MDiablo

N.F. Sierra State California

CORNER DIAGRAM



DESCRIBE CORNER MONUMENT FOUND

Scattered mound of rocks.

PHOTO IDENTIFICATION DATA

Photo No. \_\_\_\_\_  
Filed At. \_\_\_\_\_  
Object Ident. \_\_\_\_\_  
Ident. By \_\_\_\_\_  
Signature \_\_\_\_\_

DESCRIBE BEARING TREES OR OTHER OFFICIAL ACCESSORIES FOUND

- ① Found Stump of 44" Yellow Pine mentioned in Orig. notes. this stump now measures about 60" diam.
- ② Found a 42" Jeffrey Pine with evidence of blaze facing corner this tree ~~was~~ bears S 85°E 43 lks. from the corner it was 16" diam at time of orig. survey.

PLANE COORDINATE POSITION DATA

State \_\_\_\_\_ Zone \_\_\_\_\_  
X \_\_\_\_\_  
Y \_\_\_\_\_  
Estob. By \_\_\_\_\_  
Agency \_\_\_\_\_

DESCRIBE CORNER LOCATION RELATIVE TO NEAR-BY FEATURES, ALSO HOW TO REACH CORNER

Corner lies about 300ft. SW of a meadow, it also lies south of a fence junction about 150'. It is 11 chains east of the Pines-Beasore Road just below the Big Buck Spur intersection. A K-tag & property boundary sign were placed on the road.

Signature Gary Reed Title Forester Division T. Mt. Headquarters North Fork, Cal. Date 7-23-73 7100-52 (3/68)

CORNER RECORD (PERPETUATION)

MONUMENT: DESCRIBE NEW MONUMENT SET, OR WORK DONE TO PRESERVE EXISTING MONUMENT

ACCESSORIES: DESCRIBE NEW BT'S WITNESS OBJECTS ETC. ESTABLISHED, OR WORK DONE TO PRESERVE EXISTING EVIDENCE

- ① Attention signs posted.
- ② BT signs were placed on BT lies at S 85°E and at N 46°E.
- ③ A reference point was established on a young 14" tree
- ④ A K-tag was placed due West of the Corner 11 chns. on the Pines-Beasore Rd.

Work Done By \_\_\_\_\_ Title \_\_\_\_\_ Date \_\_\_\_\_ State Registration No. or Agency \_\_\_\_\_  
Certified Cor. Record Prepared? Yes No Filed At: \_\_\_\_\_ Date \_\_\_\_\_

REMARKS



W. O. GENTRY LAND SURVEYOR

SW 27

4780 E. TULARE AVENUE • FRESNO, CALIFORNIA, 93702 • PHONE 209/251-7527

V. 13

Job No. ....

SECTION CORNER TIE TAG

T. 5S. R. 23 E MD B. & M., Section 34 NW Corner  
(J. & N.W. 1/2, N. 1/2, Cor. 1/2 when possible)

DESCRIPTION OF MONUMENT

TYPE	POSITION	SET BY	DATE
Fd. Rock Mound	(See "P. 52")	R.W. Greenwood	9/7/73
Set 3/4" I.P. R.C.E. 12,406.			

TIES Date: ..... TIES Date: .....

.....  
.....  
.....  
.....  
.....  
.....  
.....  
.....  
.....  
.....  
.....  
.....  
.....  
.....  
.....  
.....  
.....  
.....  
.....  
.....

PLEASE PROTECT THIS PUBLIC MONUMENT