

# CORNER RECORD

COUNTY OF Madera T. 5 S. R. 23 E. M.D.B. & M. MERIDIAN CALIFORNIA

CORNER TYPE: GOVT. CORNER  MEANDER  EACMG  CONTROL  OTHER

CORNER IDENTIFICATION — DATE OF VISIT October 1 19 85



The east 1/16 corner of section 27 5/23.  
(Common to sections 22 and 27)

CORNER — LEFT AS FOUND  FOUND AND TAGGED  REESTABLISHED OBLITERATED CORNER  RESULT

PHYSICAL DESCRIPTION OF CORNER FOUND; EVIDENCE AND METHOD USED TO IDENTIFY OR REESTABLISH  
Corner position established by subdivision of section procedure.  
(See sketch on back)

PHYSICAL DESCRIPTION OF MONUMENTS RESULT OR PERPETUATED  
Set F.S.M., up 6". Built a rock mound 2' dia. by 1/2' around monument.  
Set a metal post with Forest Service monument signs attached 4' ± SW of the corner.

F.S.M. — Aluminum monument, 2 1/2" O.D., 30" long with a 3 1/4" O.D. aluminum cap stamped for the corner, with LS 4689, the date and the Forest Service logo.

CALIFORNIA COORDINATE SYSTEM ORDER: FIRST  SECOND  THIRD   
STATIONS USED: NGS (USC & GS)  STATE  COUNTY  OTHER  STATION \_\_\_\_\_ STATION \_\_\_\_\_  
ZONE \_\_\_\_\_ ELEVATION \_\_\_\_\_ NORTHINGS (N) \_\_\_\_\_ EASTINGS (E) \_\_\_\_\_

SKETCH: (Include reference tie or witness points, remarks and topo of area)

- | <u>Corner Ties:</u>  | <u>Cap Inscription</u>               |
|--|--------------------------------------|
| 1. A Red Fir, 18.4" dia., bears S 87° 32' E, 77.21'.   | S 22                                 |
| 2. A P.K. nail and tag (LS 4689) in a rock, 7' x 10' x 5' high bears S 1° 38' 48" E, 74.87'. | E 1/16 --<br>S 27<br>LS 4689<br>1985 |
| 3. A Ponderosa Pine, 11.7" dia., bears N 43° 21' W, 33.04'.                                  |                                      |

Found a 2 1/2" O.D.I.P., up 7", with a 2" dia. brass cap stamped for the 1/16 corner; with W.O. GENTRY LS 2737 and the date-1956 N 8° 07' 35" W, 11.03'-NOT ACCEPTED.

A fence corner bears N 8° W, 11' from the corner (fences run N and E from fence corner).

Bearings are to the center of trees at the base. Distances are horizontal to a nail and tag (stamped LS 4689) driven into the side center of the root crown.

Posted Forest Service monument and bearing tree signs.

Stamped monument in accordance with the BLM 1973 "Manual of Surveying Instructions".  
CONTINUED ON BACK

R-16  
F.B. 35/7  
Job No. 85-17

SURVEYOR'S CERTIFICATE

THIS CORNER RECORD WAS PREPARED BY ME OR UNDER DIRECTION IN CONFORMANCE WITH THE LAND SURVEYORS ACT ON Nov 1 19 85

SIGNED: Howard Arnold

LS # 4689

COUNTY SURVEYOR'S CERTIFICATE

THE CORNER RECORD WAS RECEIVED \_\_\_\_\_ 19 \_\_\_\_\_ AND EXAMINED AND FILED \_\_\_\_\_ 19 \_\_\_\_\_ BY: Howard Arnold TITLE: \_\_\_\_\_

DOCUMENT No. \_\_\_\_\_

STATEMENT ON BACK OF SHEET YES  NO



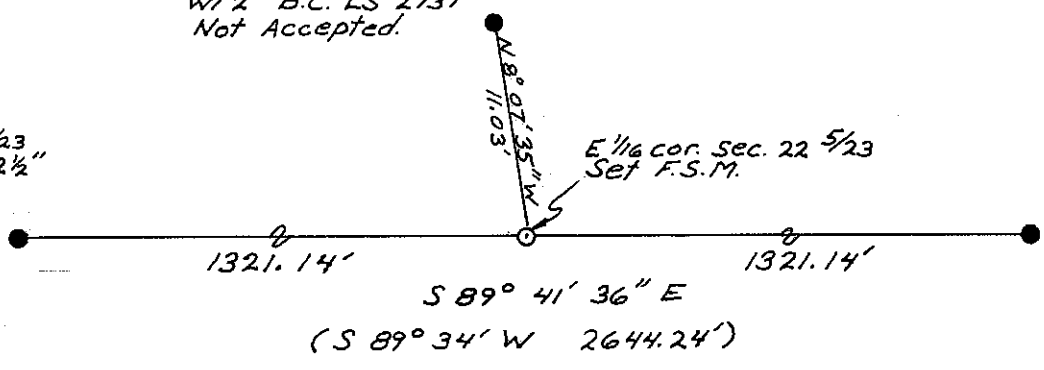
No Scale

Fd. 2 1/2" O.D.I.P.  
W/2" B.C. LS 2737  
Not Accepted.

S 1/4 cor. Sec. 22 5/23  
Fd & Accepted a 2 1/2"  
O.D.I.P. W/2" B.C.  
M.C.C.R.

E 1/16 cor. Sec. 22 5/23  
Set F.S.M.

SE cor. Sec. 22 5/23  
Fd. 2 1/2" O.D.I.P.  
W/2" B.C. M.C.C.R.



( ) ... Data per Record of Survey filed in book 7 at page 40 Madera County Official Records.

0523460300

