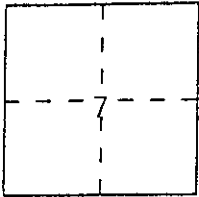


CORNER RECORD

Document Number 591221 D

City of \_\_\_\_\_ County of Madera, California

Brief Legal Description Portion of Section 7, T.5S., R.23E., M.D.B.& M.



CORNER TYPE

COORDINATES (Optional)

Government Corner  Control   
Meander  Property   
Rancho  Other   
Date of Survey Oct. 23, 1995

N. \_\_\_\_\_  
E. \_\_\_\_\_  
Zone \_\_\_\_\_ Datum \_\_\_\_\_  
Elev. \_\_\_\_\_

Corner — Left as found  Found and tagged  Established  Reestablished  Rebuilt

Identification and type of corner found: Evidence used to identify or procedure used to establish or reestablish the corner:  
Corner No. 3 of the Morning Star Extension per Mineral Survey 5049AB. Re-established corner at record bearing intersection from two original bearing trees.

A description of the physical condition of the monument as found and as set or reset: Set 5/8" diameter bar with plastic cap L.S. 5339. Set 20D nail and brass tag L.S. 5339 at side center of bearing trees.

SURVEYOR'S STATEMENT

This Corner Record was prepared by me or under my direction in conformance with the Land Surveyors' Act on 12/21 19 95.

Signed [Signature] L.S. or R.C.E. Number 5339



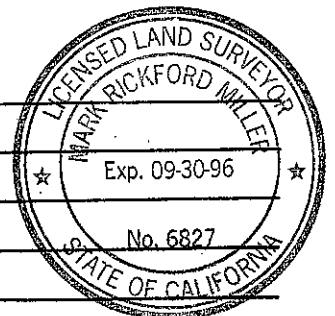
COUNTY SURVEYOR'S STATEMENT

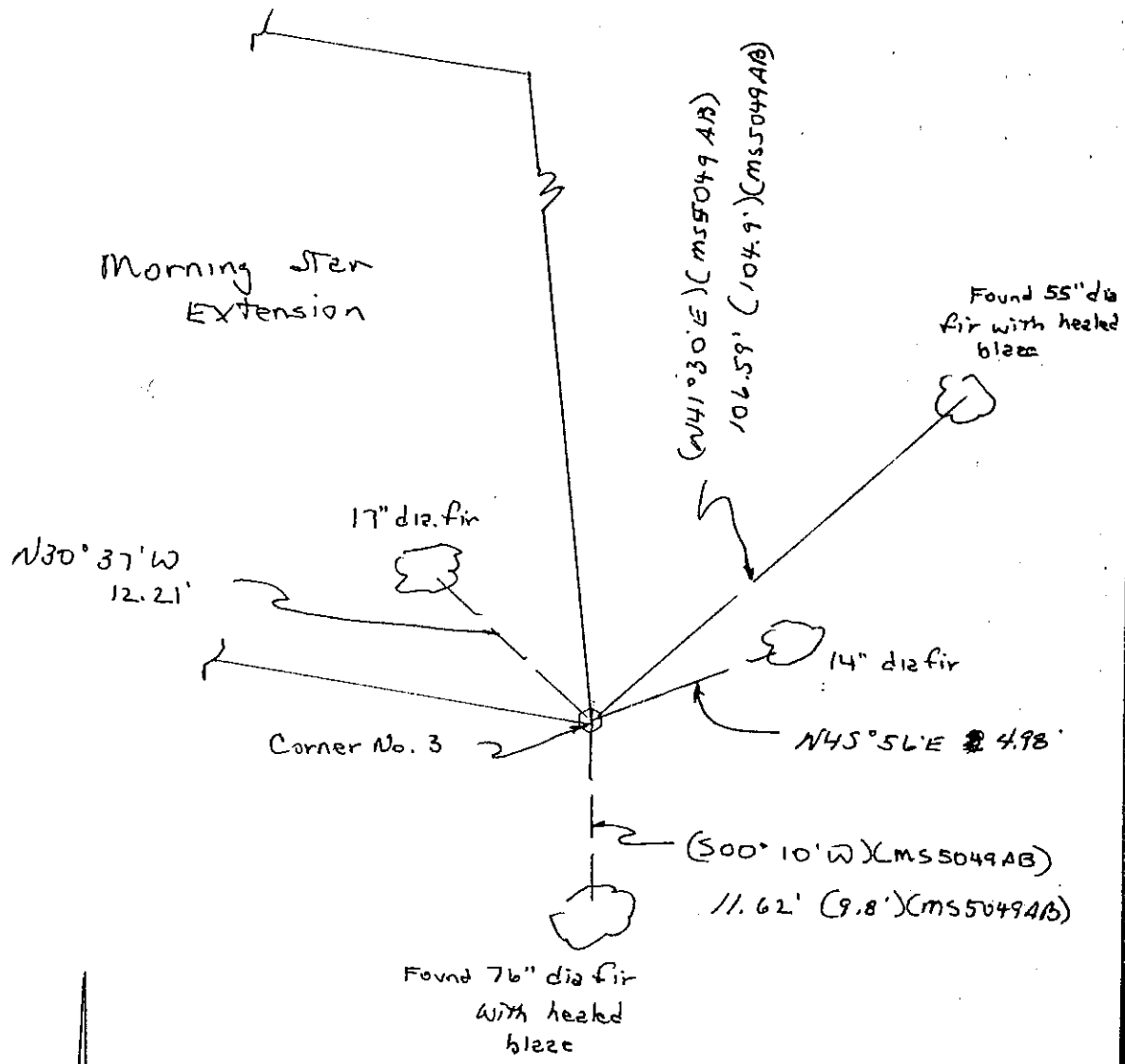
This Corner Record was received 22 DEC 19 95 and examined


and filed 29 JAN 19 96.

Signed [Signature] Title Act. Co. Surveyor

County Surveyor's Comment \_\_\_\_\_





  
 No Scale

0523