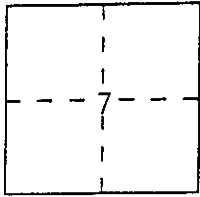


CORNER RECORD

Document Number 591221 E

City of _____ County of Madera, California

Brief Legal Description Portion of Section 7, T.5S., R.23E., M.D.B. & M.



CORNER TYPE

Government Corner Control
 Meander Property
 Rancho Other
 Date of Survey Oct. 23, 1995

COORDINATES (Optional)

N. _____
 E. _____
 Zone _____ Datum _____
 Elev. _____

Corner — Left as found Found and tagged Established Reestablished Rebuilt

Identification and type of corner found: Evidence used to identify or procedure used to establish or reestablish the corner:
Corner No. 2 of the Morning Star Extension per Mineral Survey 5049AB. Found a 4' diameter rock mound, also found a bearing tree with legible scribing.

A description of the physical condition of the monument as found and as set or reset: Set 5/8" bar with plastic cap L.S. 5339, at center of rock mound. Set 2 OD nail and brass tag L.S. 5339 at side center of bearing trees.

SURVEYOR'S STATEMENT

This Corner Record was prepared by me or under my direction in conformance with the Land Surveyors' Act on 12/21 1995.

Signed [Signature] L.S. or R.C.E. Number 5339

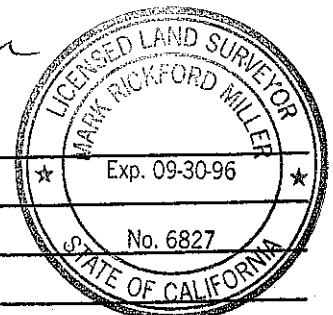


COUNTY SURVEYOR'S STATEMENT

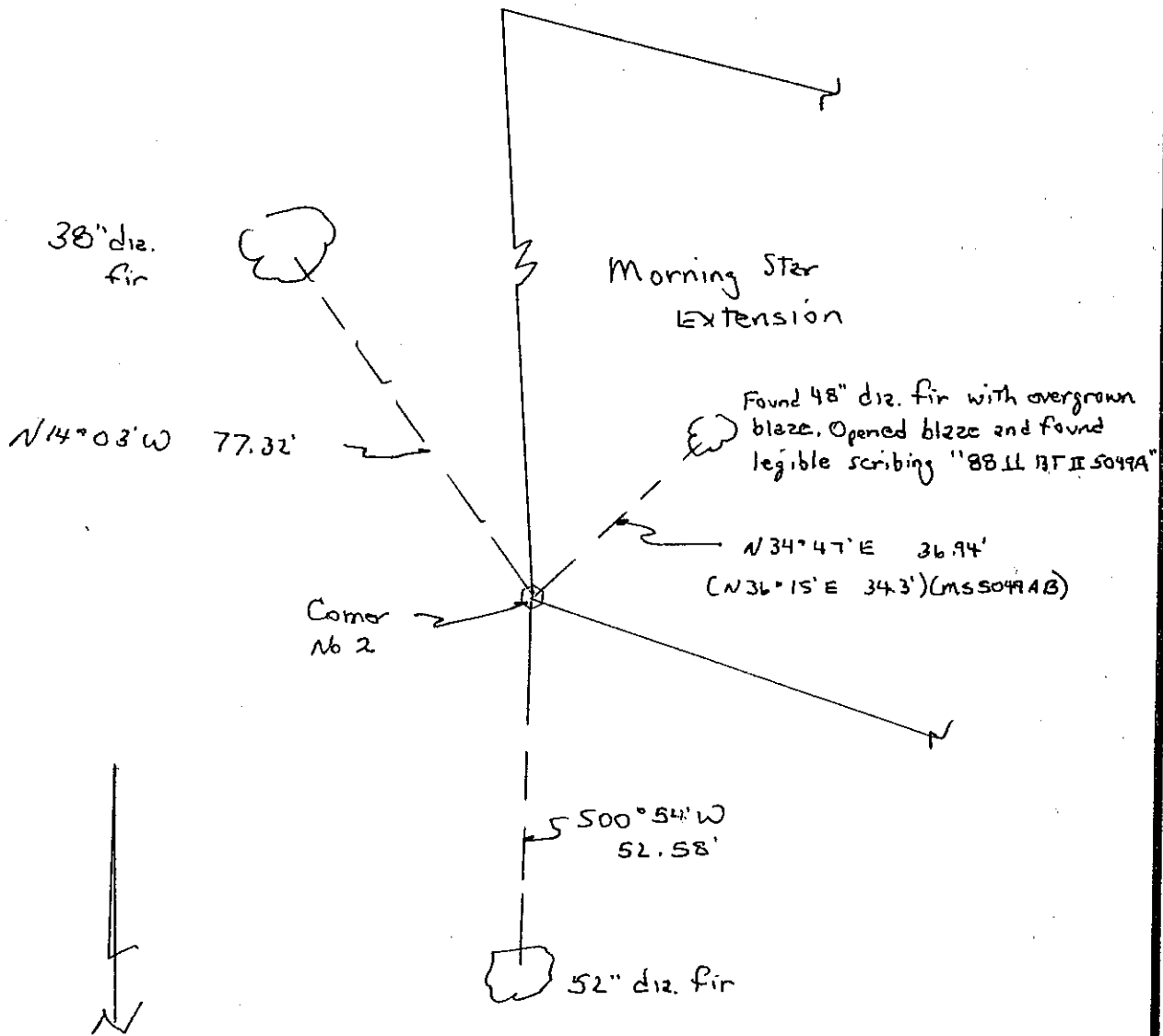
This Corner Record was received 22 DEC 1995 and examined

and filed 29 JAN 1996.

Signed [Signature] Title Asst. Co. Surveyor



County Surveyor's Comment _____



No Scale.

0523