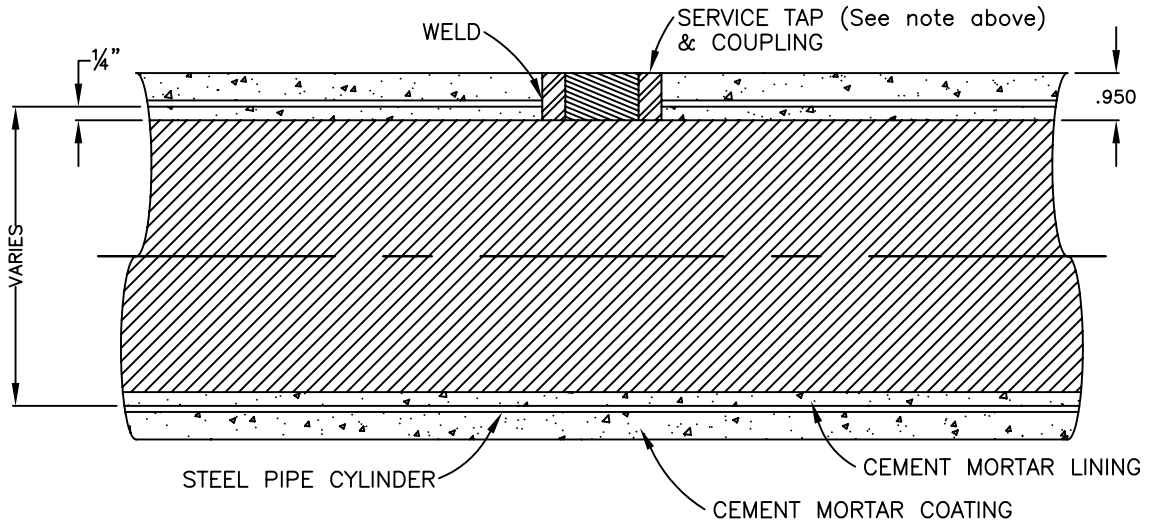


NOTE:

FOR 3/4" & 1" WATER SERVICE USE 1 1/4" COUPLING
 FOR 1 1/2" WATER SERVICE USE 2" COUPLING
 FOR 2" WATER SERVICE USE 2 1/2" COUPLING
 AN APPROVED INSULATING BUSHING AND COUPLING SHALL BE USED TO
 CONNECT THE CORPORATION STOP TO THE SERVICE TOP COUPLING



ALL WATER SERVICE TAPS FOR CEMENT - COATED STEEL PIPE SHALL BE
 SHOP FABRICATED.

Spec's By _____	COUNTY OF MADERA TYPICAL WATER SERVICE TAP FOR CEMENT-COATED STEEL PIPE	Date 7-1-81
Drawn By <u>J. SHIELDS</u>		Scale NONE
APPROVED BY _____		Drawing No. W-7C
REVISIONS	8/1/02	