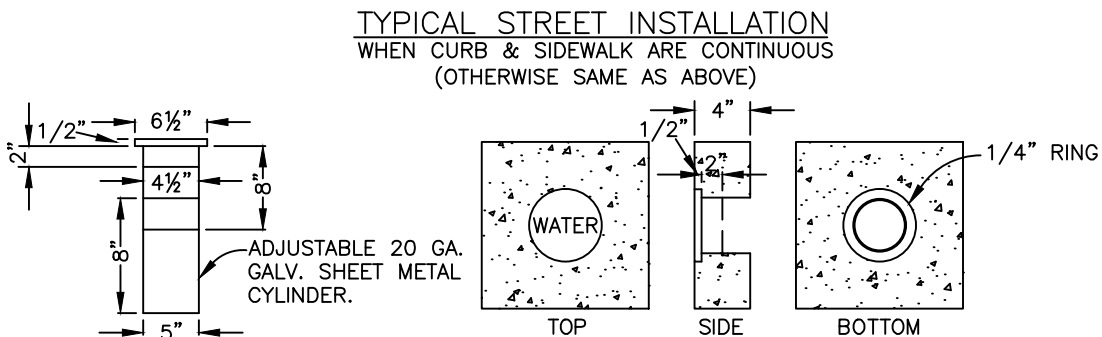
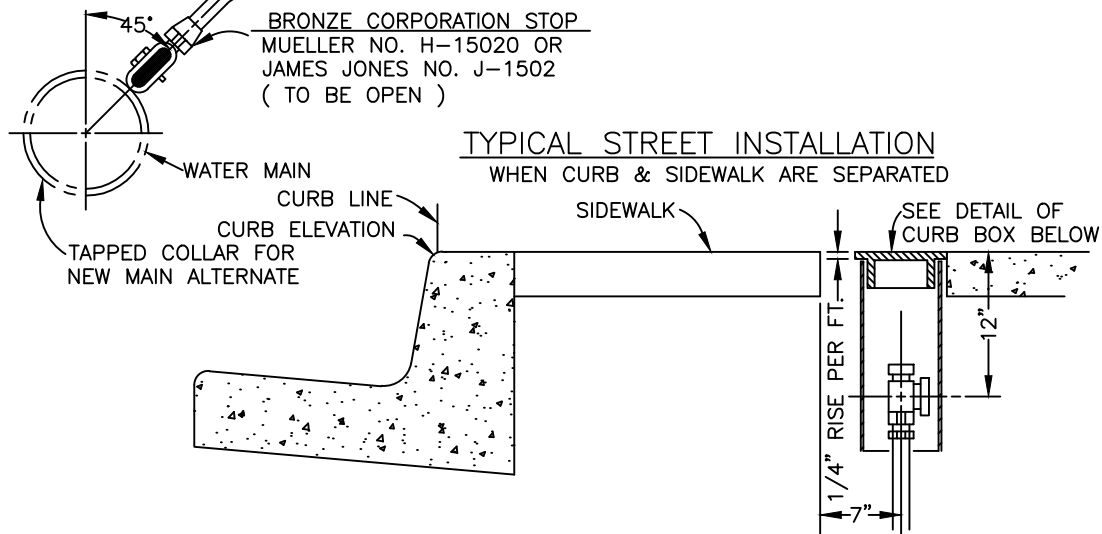
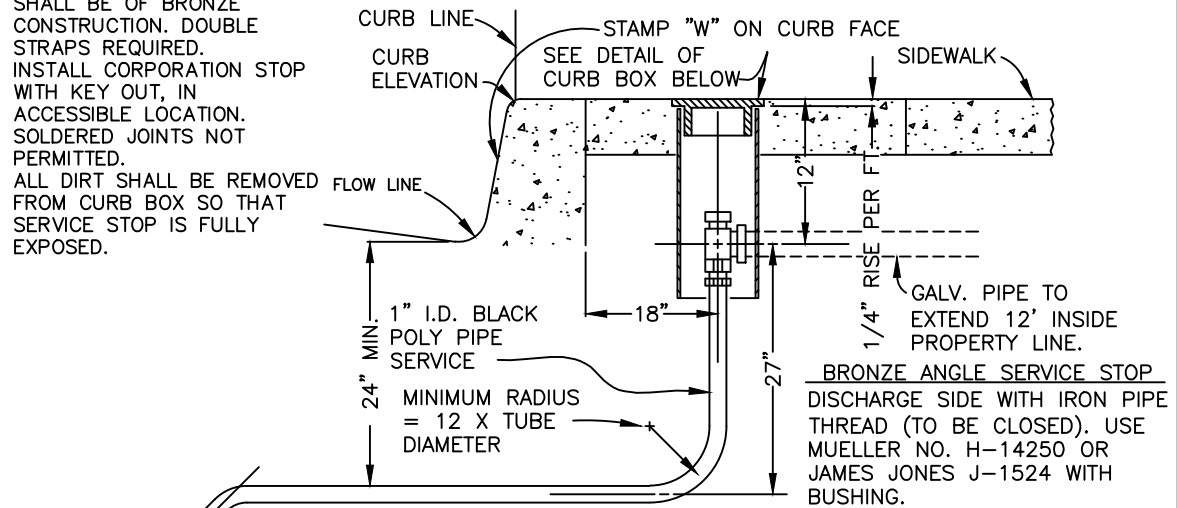


**NOTES:**

1. SERVICE SADDLES SHALL BE USED ON 6" PVC WATER MAIN. SERVICE SADDLE SHALL BE OF BRONZE CONSTRUCTION. DOUBLE STRAPS REQUIRED.
2. INSTALL CORPORATION STOP WITH KEY OUT, IN ACCESSIBLE LOCATION. SOLDERED JOINTS NOT PERMITTED.
3. ALL DIRT SHALL BE REMOVED FROM CURB BOX SO THAT SERVICE STOP IS FULLY EXPOSED.



**DETAIL OF CURB BOX AND COVER**

V:\CAD Files\W Dwg\W7A-1 Inch Water Service With No Meter.DWG 10-17-11 11:11:30 AM eli.mcfarland

Spec's By _____	<b>COUNTY OF MADERA</b>  <b>1" I.D. WATER SERVICE WITH NO METER</b>	Date: 7-1-81			
Drawn By <u>J. SHIELDS</u>		Scale: NONE			
APPROVED BY _____		Drawing No. W-7A			
REVISIONS	8/1/02	8/21/09	4/22/2011		