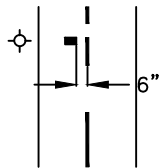
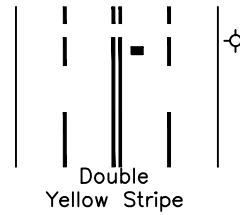


V:\CAD Files\W Dwg\W4B-FH Markers.DWG 10-17-11 11:11:09 AM eli.mcfarland

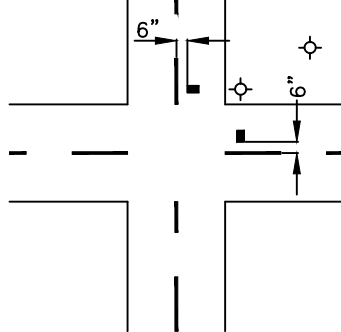
TWO LANE STREET



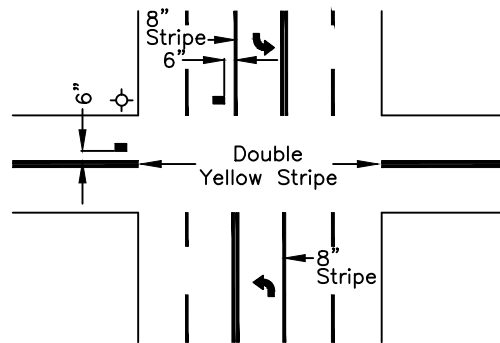
MULTI-LANE STREET



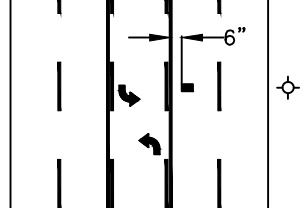
TWO LANE STREET AT INTERSECTION



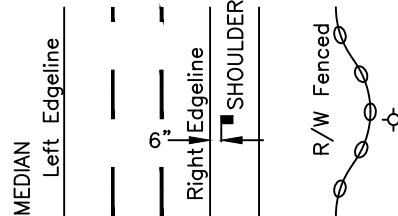
FOUR LANE STREET WITH TURN LANE AT INTERSECTION



MULTI-LANE STREET WITH TURN LANE



FREEWAYS AND EXPRESSWAYS



LEGEND

- Blue Pavement Marker
- ⊕ Fire Hydrant

NOTES:

1. REFLECTIVE FIRE HYDRANT MARKERS SHALL BE INSTALLED AT THE FIRE DEPARTMENT'S DIRECTIONS.
2. MARKERS SHOULD BE PLACED IN LINE WITH HYDRANT AND ABOUT 6" OFF CENTER ON HYDRANT SIDE AND NOT IN A LOW SPOT.
3. MARKERS SHALL BE BLUE "STIMSONITE 88" BI-DIRECTIONAL, OR EQUIVALENT APPROVED BY THE FIRE CHIEF.
4. WHEN A FIRE HYDRANT IS WITHIN 50' OF A CORNER, A MARKER SHOULD BE PLACED ON EACH INTERSECTING STREET.

Spec's By _____	COUNTY OF MADERA	Date: 7-1-81
Drawn By <u>J. SHIELDS</u>		Scale: NONE
APPROVED BY _____	TYPICAL FIRE HYDRANT LOCATION PAVEMENT MARKERS	Drawing No. W-4B
REVISIONS		8/1/02