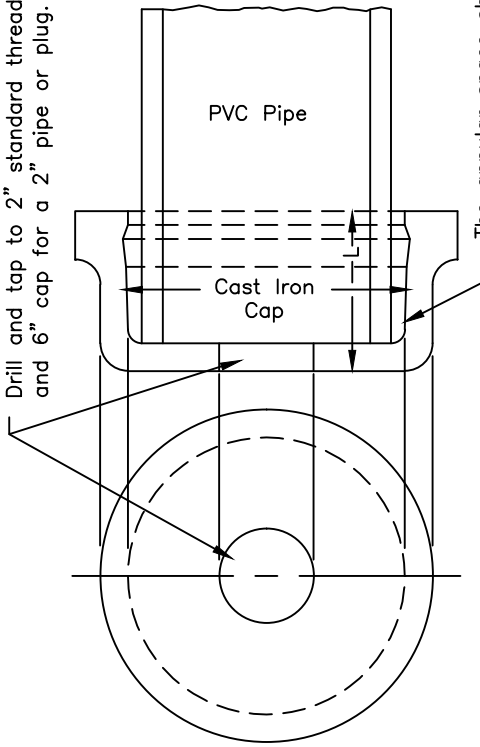


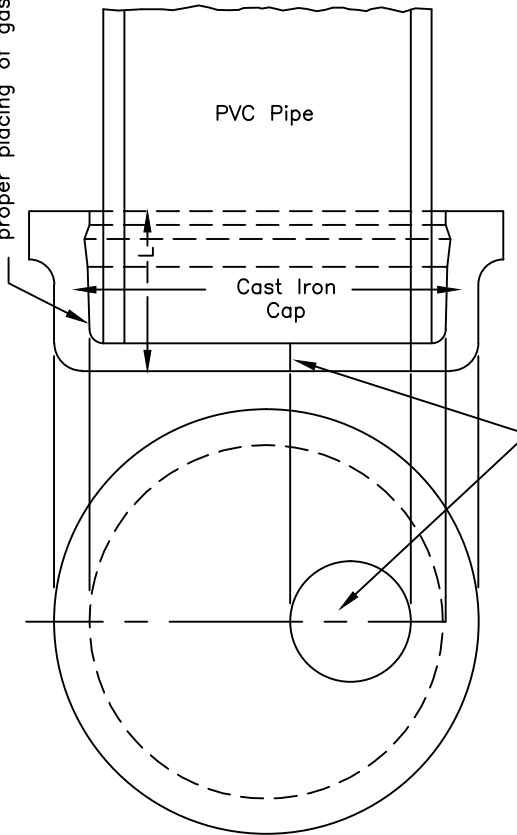
V:\CAD Files\W Dwg\W3-Cast Iron Cap.DWG 10-17-11 11:11:00 AM eli.mcfarland

Drill and tap to 2" standard thread in 3", 4" and 6" cap for a 2" pipe or plug.



3", 4" & 6" DIA.

The annular space shall be of uniform width and depth to allow for proper placing of gasket and cement.



Drill and tap to 3" standard thread in 8", 10" and 12" cap for a 3" pipe or plug.

8", 10" & 12" DIA.

TAPPED CAPS			
Size Inches	Tap Inches	L Inches	Weight Pounds
3	2	4.60	20
4	2	4.60	27
6	2	4.65	40
8	3	4.75	59
10	3	4.75	84
12	3	4.75	108

UNLESS OTHERWISE SHOWN ON THE PLANS, A 2" OR 3" CAST IRON PLUG SHALL BE FURNISHED WITH EACH TAPPED AND THREADED CAP.

FOR CONCRETE ANCHORS SEE W-1A.

Spec's By _____

COUNTY OF MADERA

Date:
7-1-81

Drawn By J. SHIELDS

**CAST IRON CAP
FOR PVC PIPE**

Scale:
NONE

APPROVED BY _____

Drawing No.
W-3

REVISIONS 8/1/02 4/22/2011