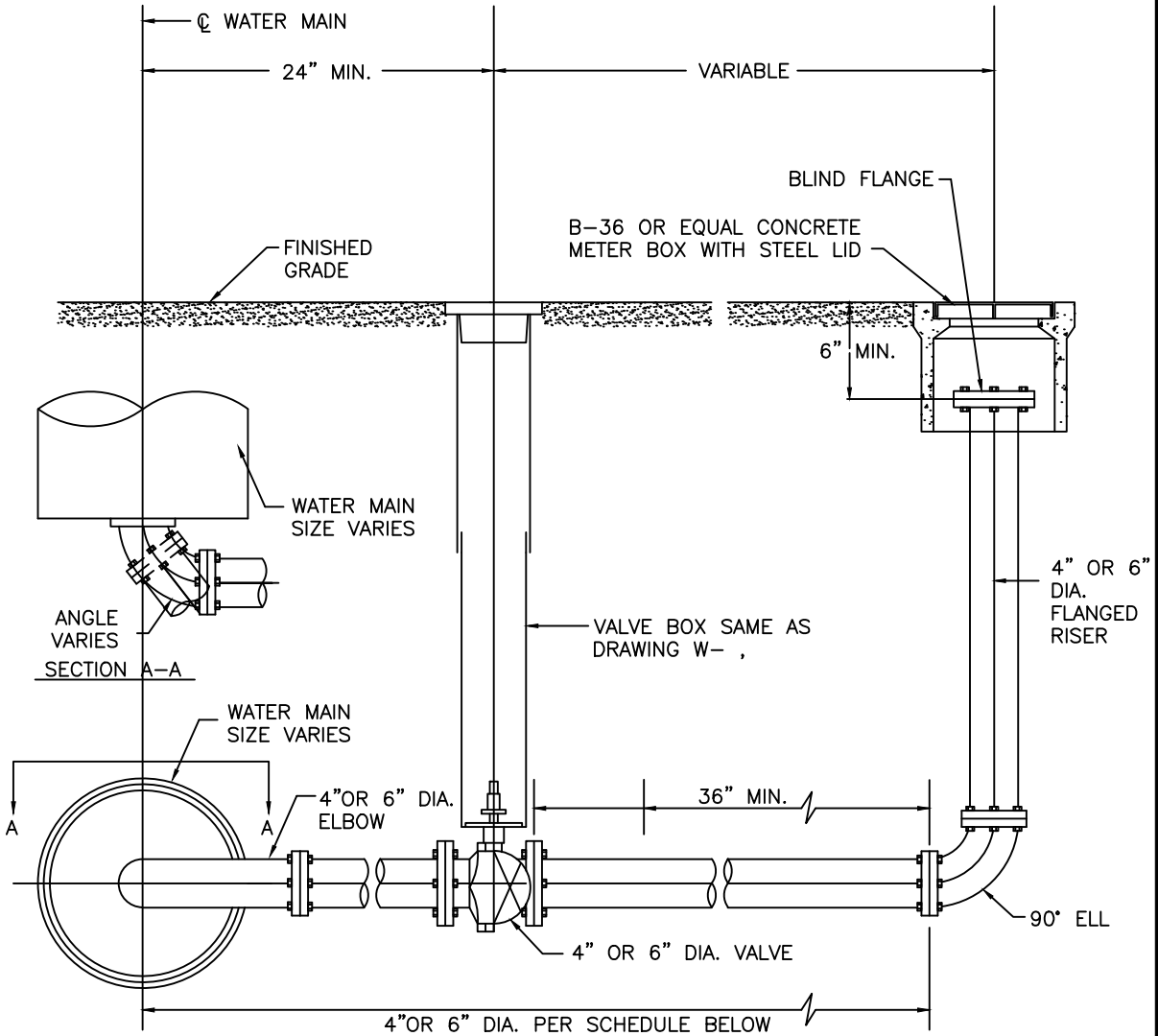


V:\CAD Files\W Dwg\W2B-Blow Off Assembly Type B.dwg 10-17-11 11:10:55 AM eli.mcfarland



**NOTES:**

1. ALL FITTINGS SHALL BE SECURED WITH RETAINING GLANDS, HARNESSSES OR TIE-RODS AS APPLICABLE.
2. PLACE VALVES AND BLOW-OFFS OUTSIDE SIDEWALK AND DRIVEWAY AREAS.
3. ALL RISERS SHALL BE FLANGED.

**BLOW-OFF SCHEDULE**

PIPE SIZE	
MAIN	BLOW-OFF
6"	4"
8"	4"
10"	4"
12"	6"
14"	6"
16"	6"

Spec's By \_\_\_\_\_

**COUNTY OF MADERA**

Date:  
8-21-09

Drawn By J. SHIELDS

**BLOW-OFF ASSEMBLY  
TYPE B**

Scale:  
NONE

APPROVED BY \_\_\_\_\_

Drawing No.  
W-2B

REVISIONS | 4/22/2011