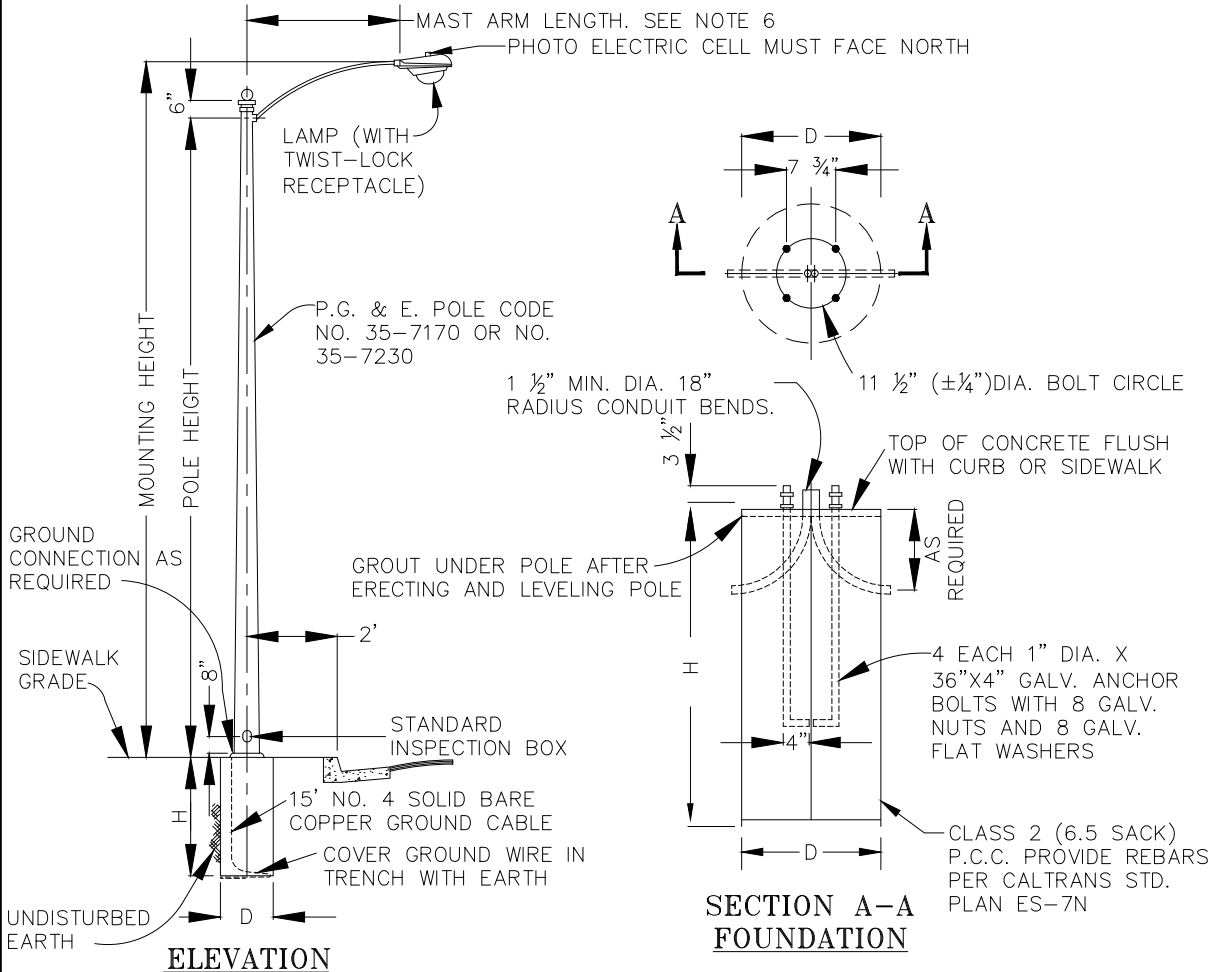


NOTES:

1. SPACING OF STANDARDS SHALL BE ONE STANDARD AT EACH INTERSECTION AND SPACED BETWEEN INTERSECTIONS AS SHOWN IN TABLE BELOW OR AS OTHERWISE SPECIFIED BY THE ROAD COMMISSIONER OR HIS DESIGNEE.
2. ELECTRIC WIRE SHALL BE APPROVED UNDERGROUND CABLE AS PER PG&E STANDARDS.
3. GROUND CONNECTION SHALL BE AS SHOWN IN FOOTING DETAIL BELOW.
4. CONTROLS SHALL BE PROVIDED FOR AUTOMATIC OPERATION.
5. PAINT SHALL CONSIST OF ONE ZINC CHROMATE PRIMER COAT AND TWO FINISH COATS OF ALUMINUM AS REQUIRED BY PG&E.
6. WHEN LIGHT POLE IS LOCATED BEHIND CONTIGUOUS SIDEWALK, USE 10 FOOT LONG MAST ARM.
7. ALL WORK SHALL BE SUBJECT TO INSPECTION BY THE ROAD DEPARTMENT AND SHALL BE TESTED FOR SATISFACTORY OPERATION BEFORE FINAL APPROVAL WILL BE GIVEN.
8. INSTALLATION TO BE COMPLETE, INCLUDING ALL POWER SERVICE INSTALLATION AND CONNECTION CHARGES.
9. COMPLETE INSTALLATION AND MATERIALS SHALL BE TO PG&E STANDARDS OR AS OTHERWISE SPECIFIED BY THE ROAD COMMISSIONER OR HIS DESIGNEE.
10. REFER TO STANDARD DRAWINGS ST-22B, ST-22C, ST-22D AND ST-22E FOR ADDITIONAL REQUIREMENTS.

STREET CLASSIFICATION	GALVANIZED STEEL POLE HEIGHT	ARM LENGTH (FEET)	LAMP		MOUNTING HEIGHT	POLE SPACING (FEET)	BASE DIMENSION		PG&E CODE
			VOLTS	HIGH PRESSURE SODIUM WATTS			D	H	
RESIDENTIAL (THROUGH)	26.5'	6	100	100	28'	180-220	2'	4.5'	35-7170
RESIDENTIAL (CUL-DE-SAC)	26.5'	6	100	100	28'	180-240	2'	4.5'	35-7170
MINOR COLLECTOR	26.5'	6	150	150	28'	180-210	2'	4.5'	35-7170
MAJOR COLLECTOR	31'	6	200	200	32.5'	180-200	2.5'	4.5'	35-7230

* 150 WATT HPS REQUIRED AT INTERSECTIONS.



C:\DOCUMENTS\1\JCHAND~1\LOCALS~1\Temp\AcPublish_3844\ST-22A Metal Pole Street Light (1 of 2).DWG 2-27-12 12:56:08 PM jchandler

DRAWN BY	_____
DATE	3/5/1980
REVISED BY	J.S.C.
DATE	3/3/2011

COUNTY OF MADERA
STREET LIGHT INSTALLATION

DRAWING NO.
ST-22A