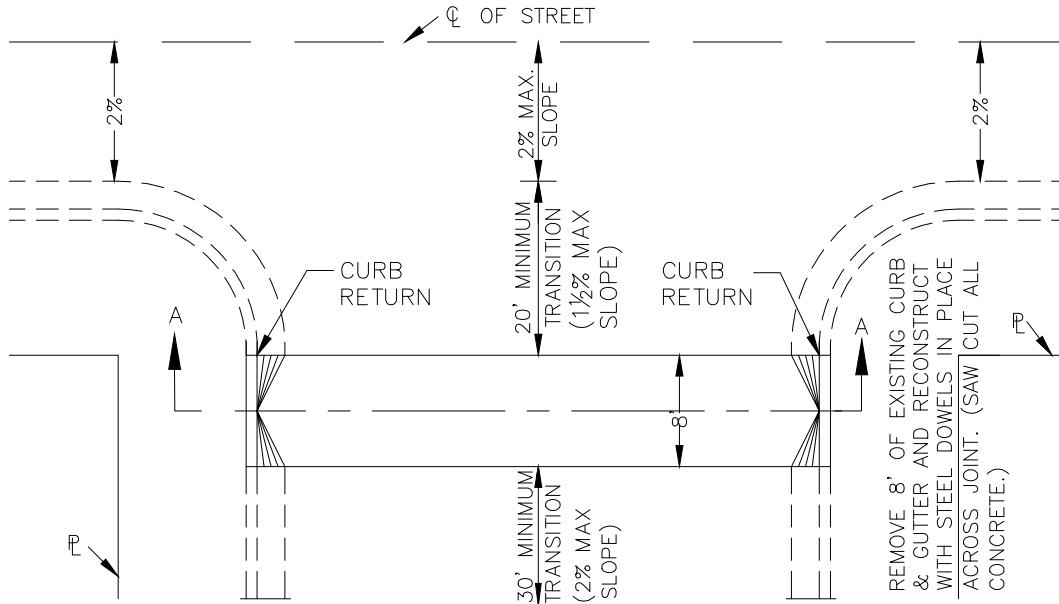


S:\ENG\STANDARD PLANS\County\ST-1C Special Valley Gutter.DWG 2-27-12 12:00:08 PM jchandler

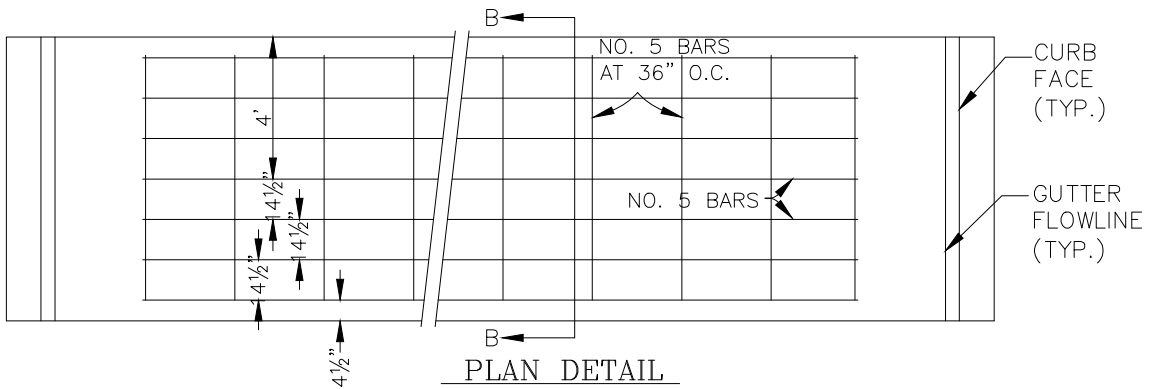


* HUNT PROCESS CURING COMPOUND SHALL BE APPLIED TO FRESH CONCRETE BY ROLLING, BRUSHING, OR SPRAYING FOR CURING.

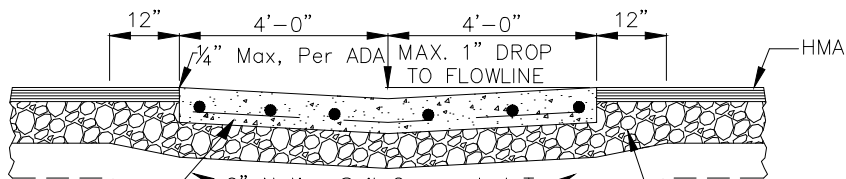
PLAN



SECTION A-A



PLAN DETAIL



SECTION B-B

MINOR CONCRETE (6 SACK) PER STATE STD. SPEC'S SEC. 90

6" CL 2 AGGREGATE BASE COMPACTED TO 95% PER TEST METHOD ASTM D1557

DRAWN BY _____
 DATE 3/5/1980
 REVISED BY J.S.C.
 DATE 3/3/2011

COUNTY OF MADERA

SPECIAL VALLEY GUTTER

DRAWING NO.
ST-1C