

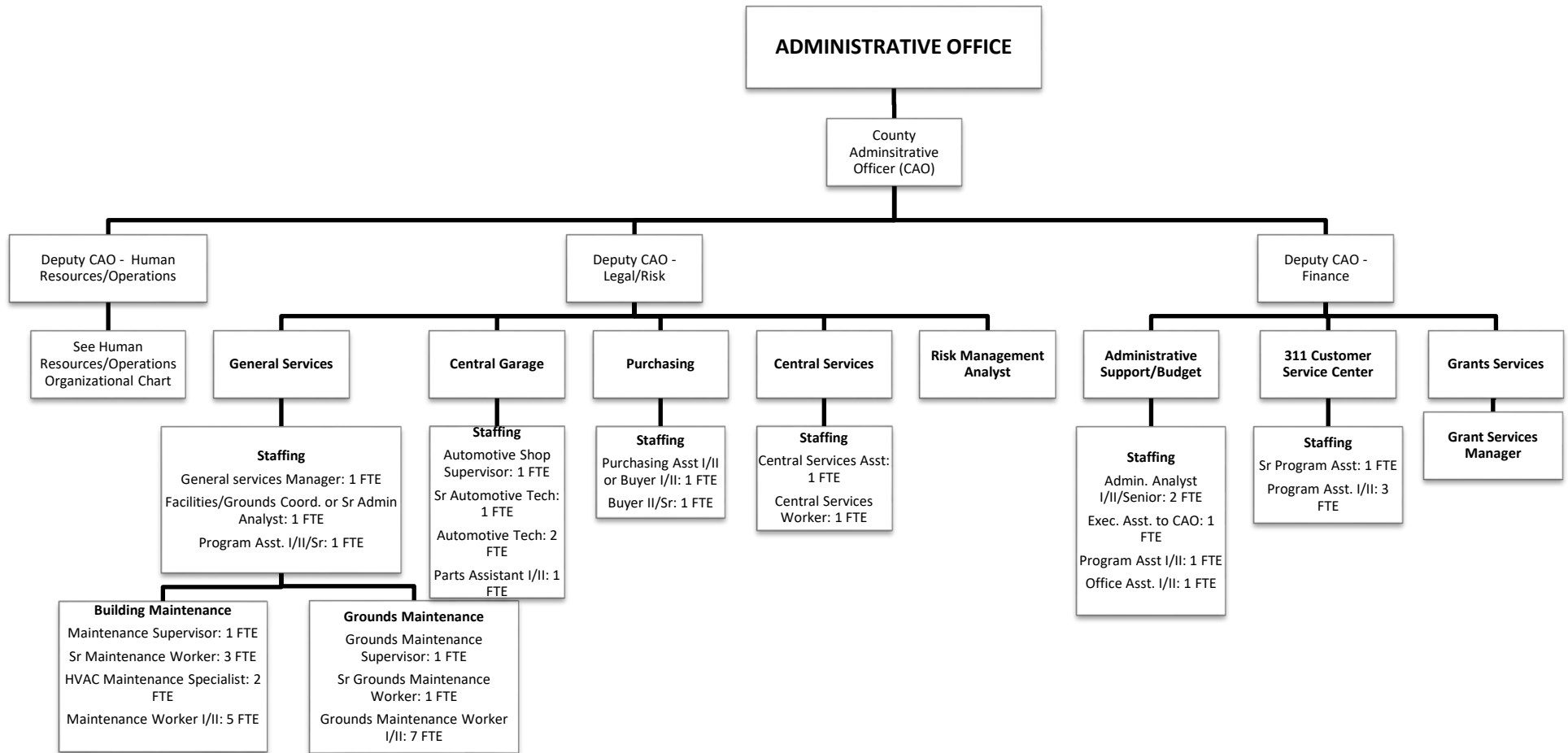


DEPARTMENTAL ORGANIZATIONAL CHARTS

The Departmental Organizational Charts contained in this document reflect the 2019-20 Recommended staffing allocations, inclusive of funded and unfunded positions, and are shown by assignment within the functional areas or programs of the department. These charts are intended to only provide an overview of the department and its functions/ programs and how those areas are staffed.

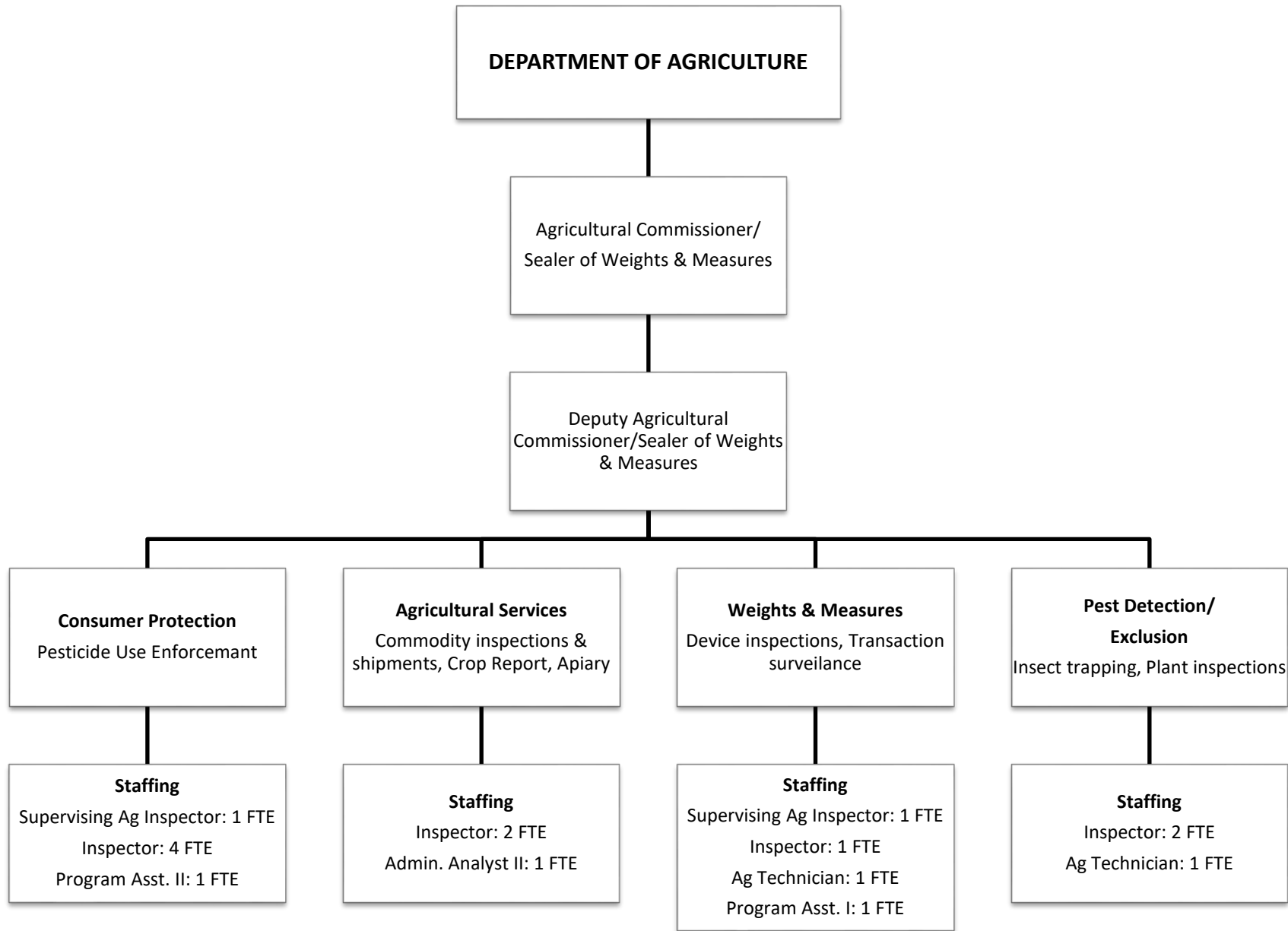
For more information on funded and unfunded positions, please refer to the specific departmental position summary.

Note: Organizational charts are presented in alphabetical order by department.

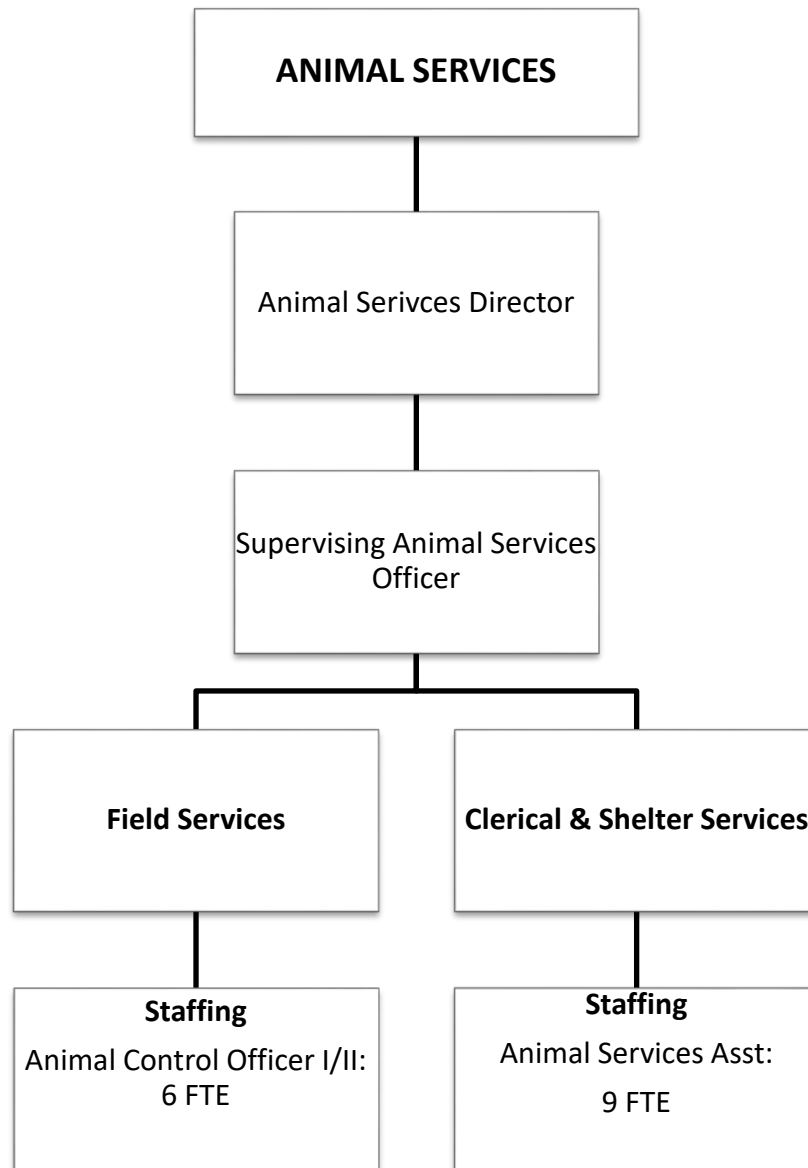


Total FTE: 43

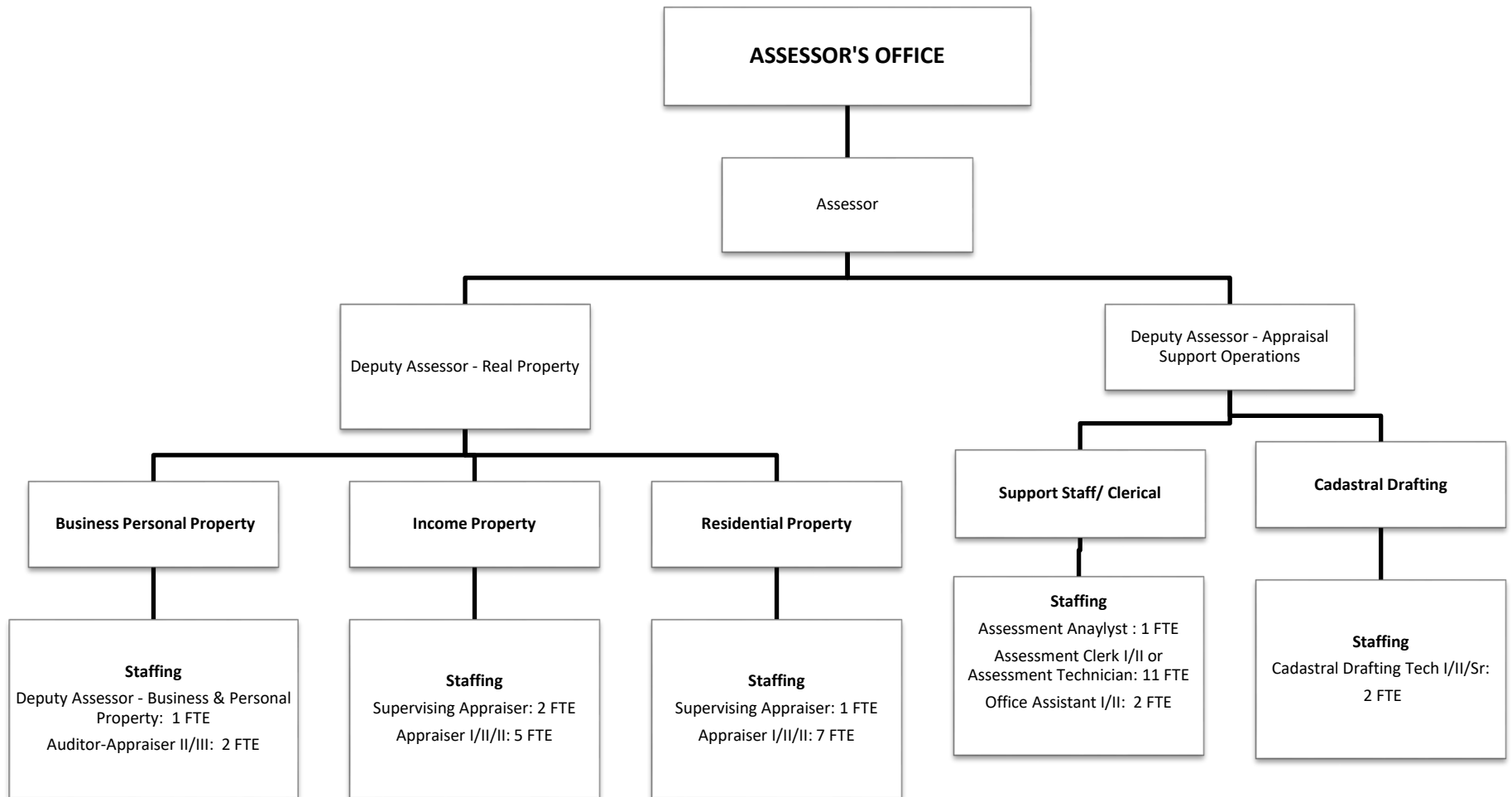
Note: Total FTE does not include staffing reflected on Human Resources/Operations Organizational Chart



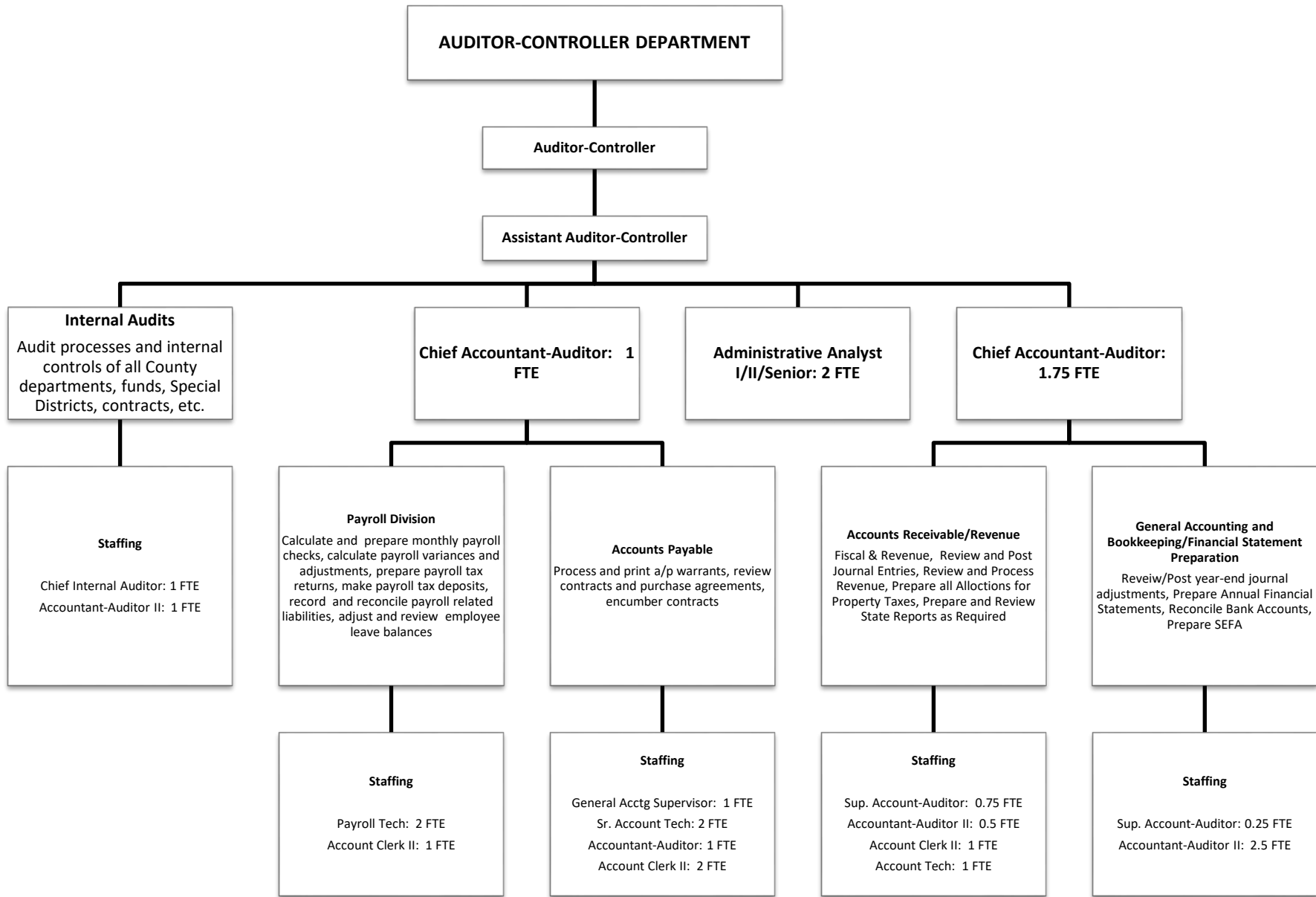
Total FTE: 18



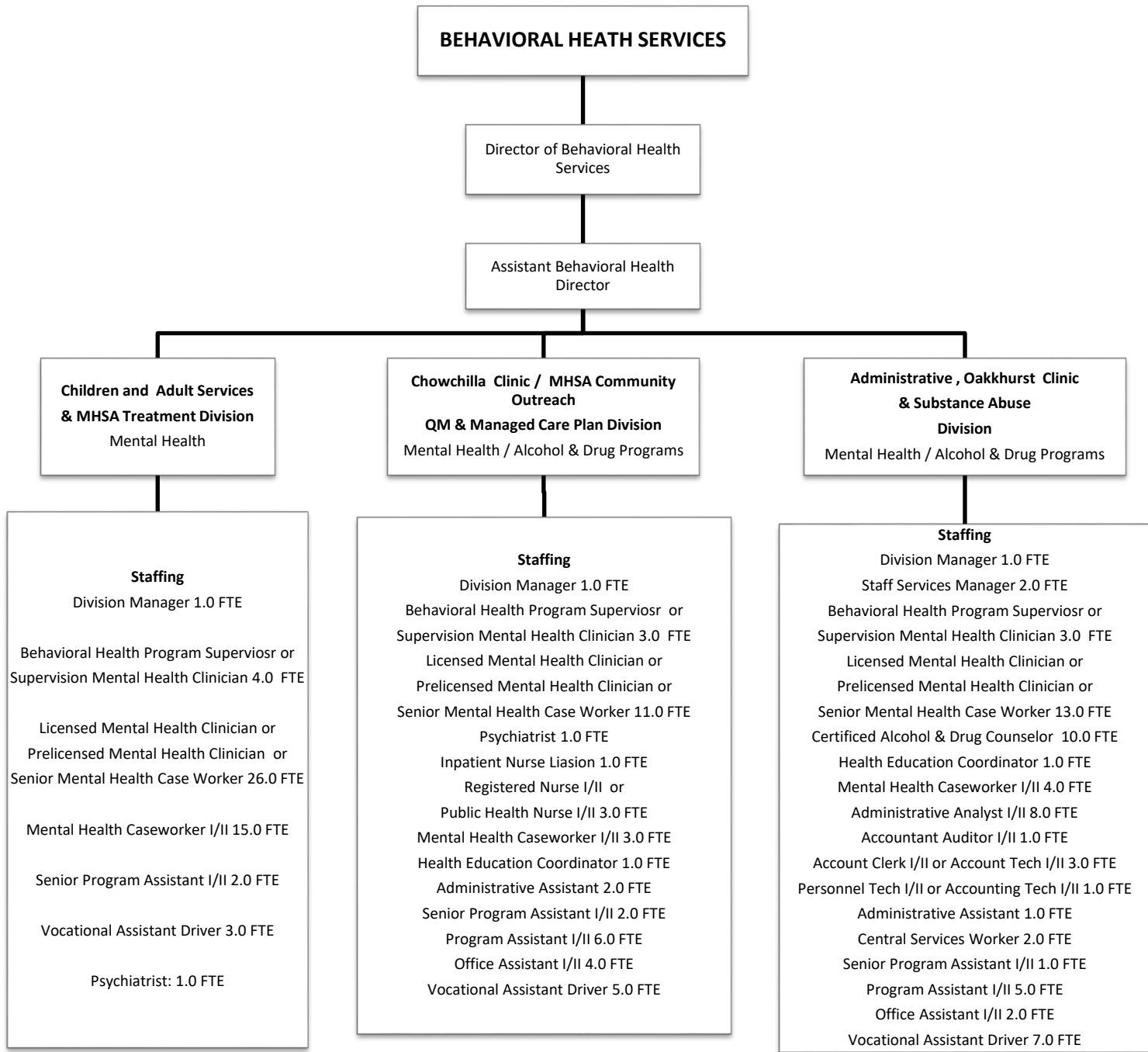
Total FTE: 17



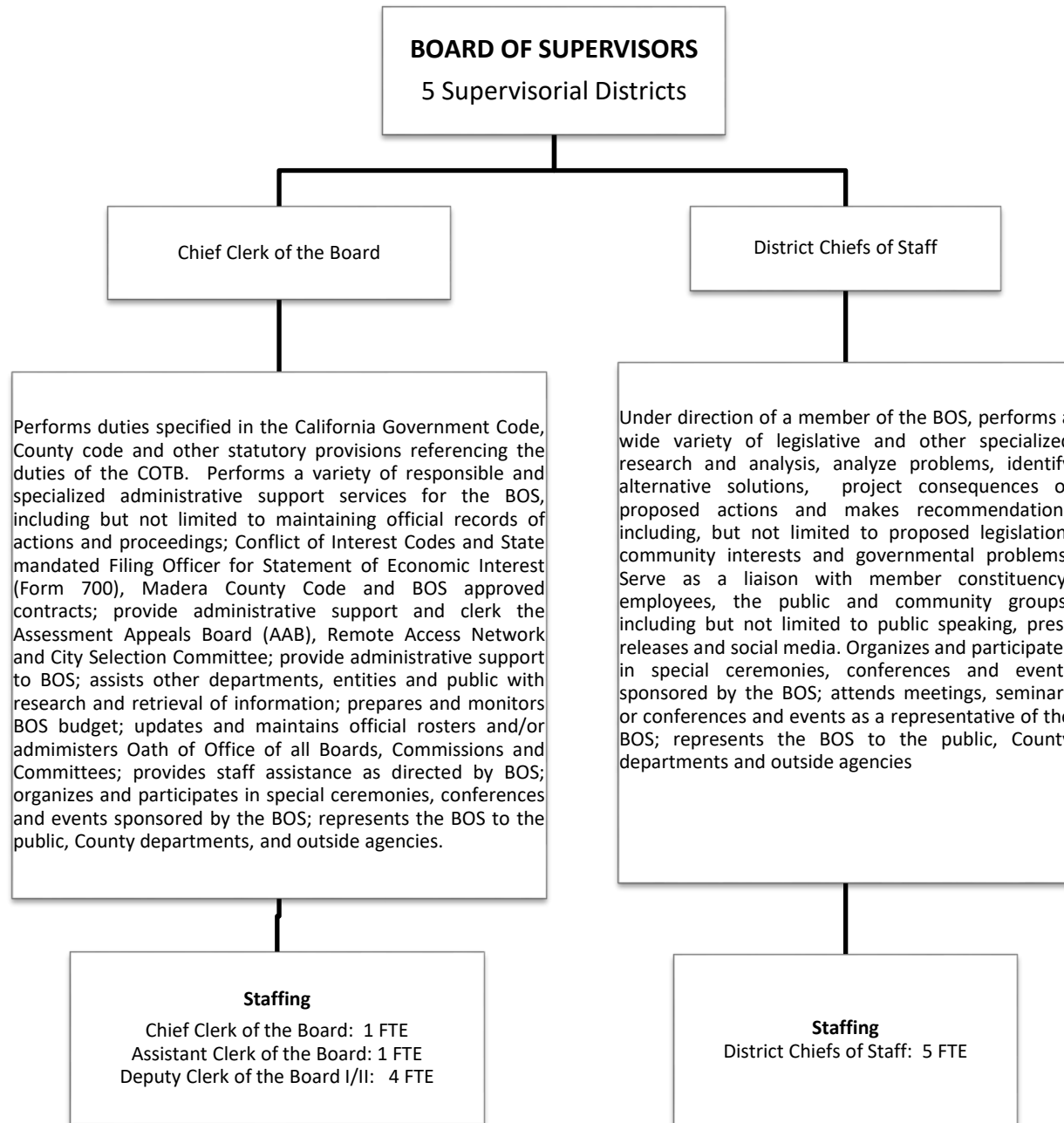
Total FTE: 37



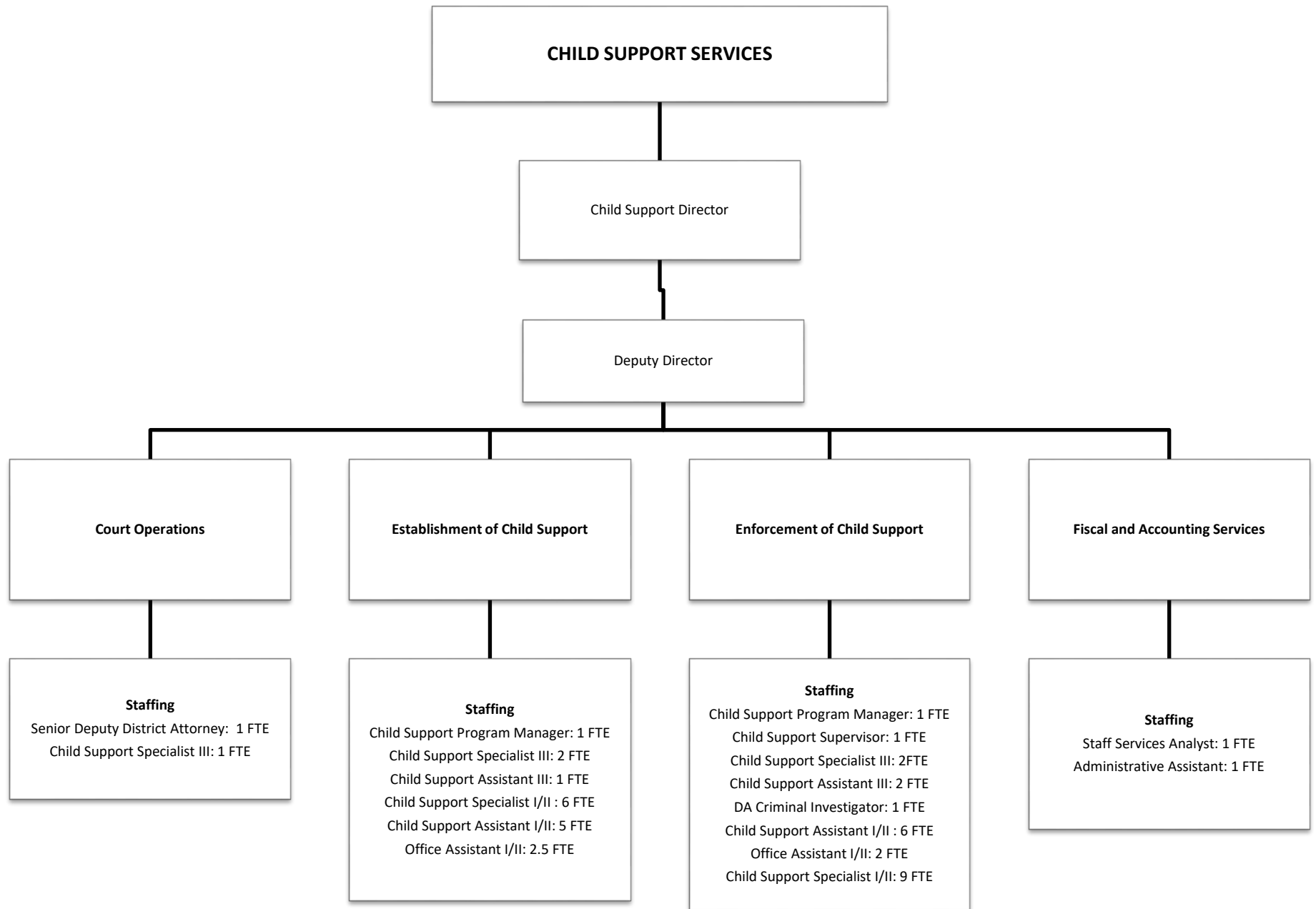
Total FTE: 23.75



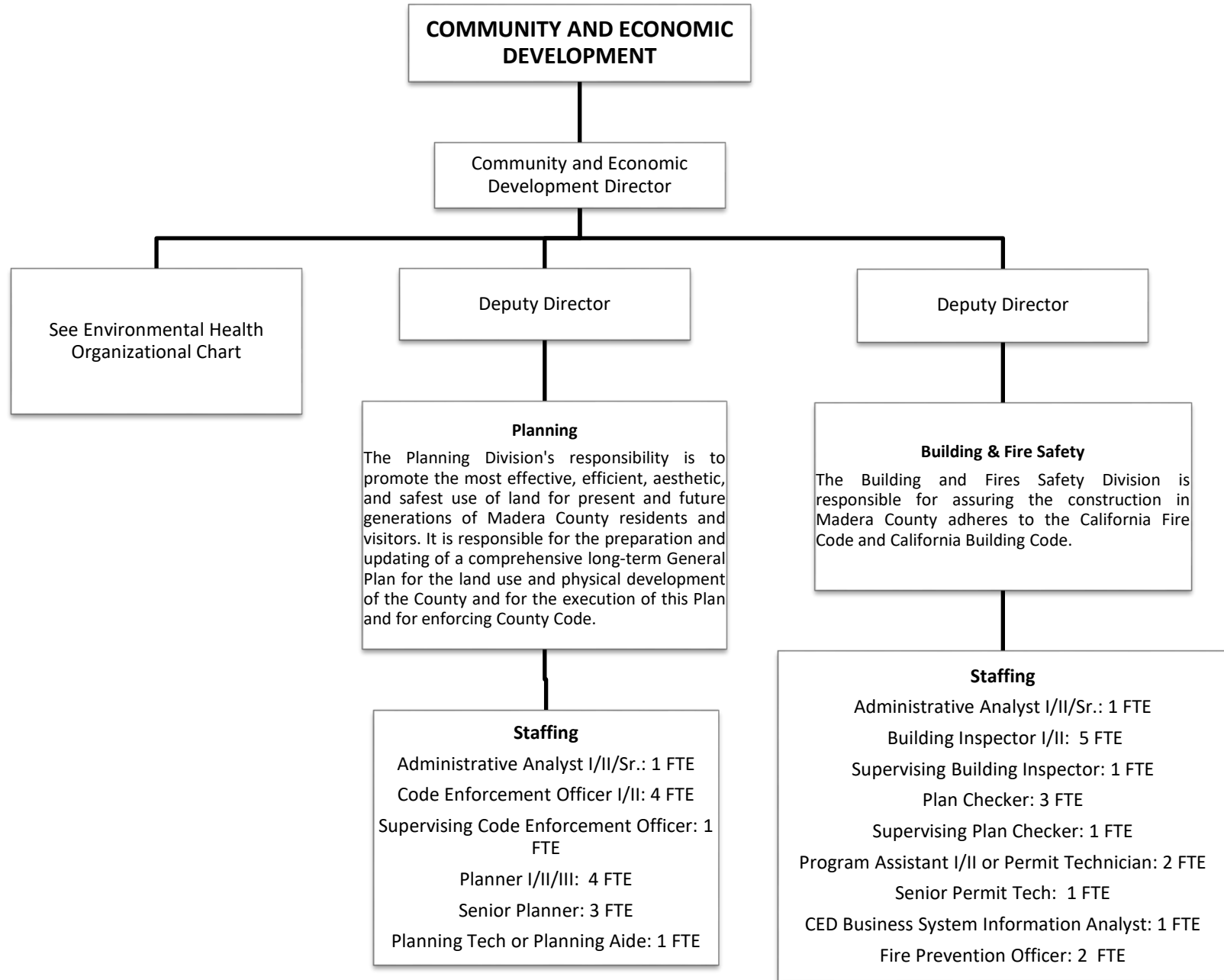
Total FTE: 162



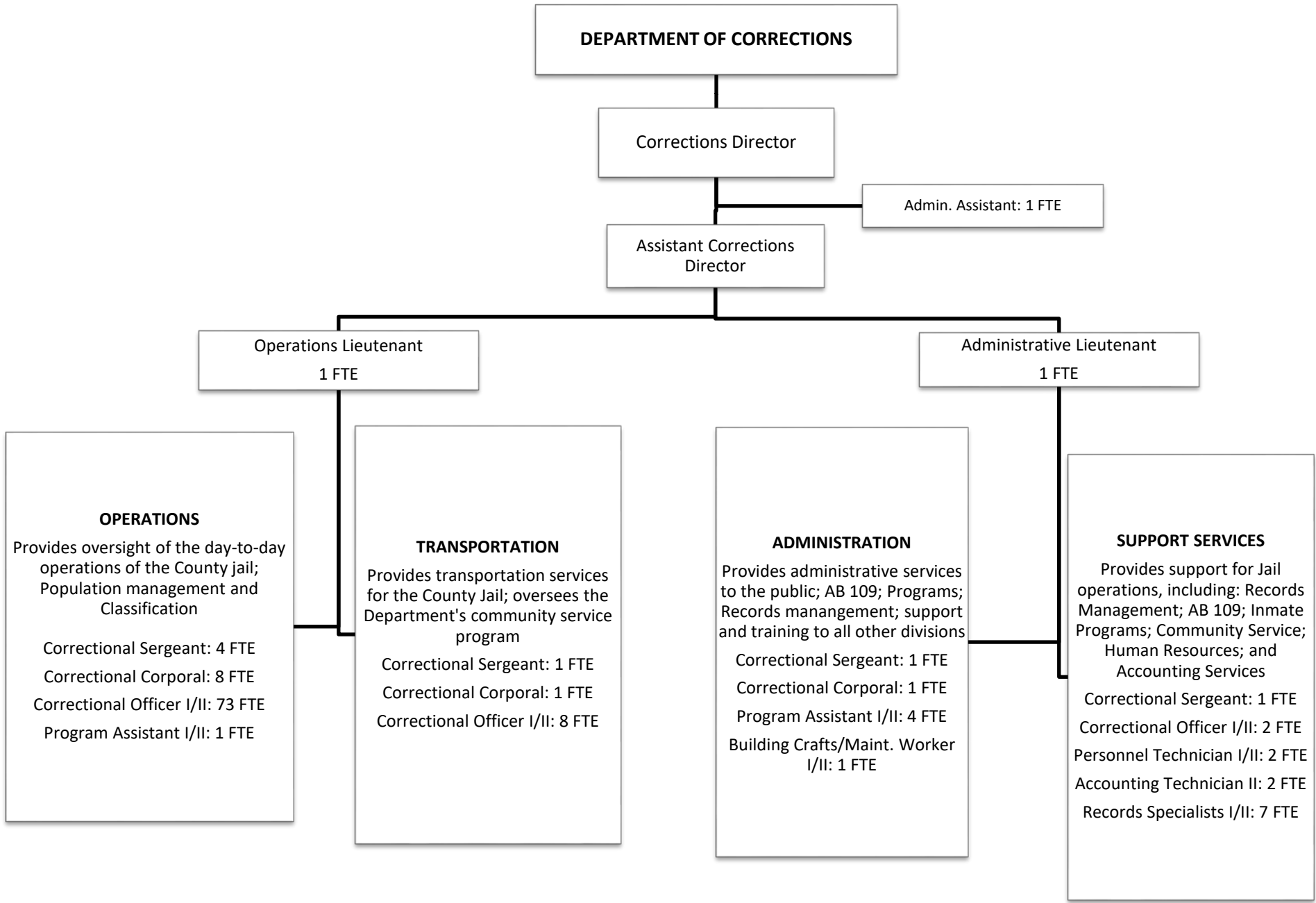
Total FTE: 16



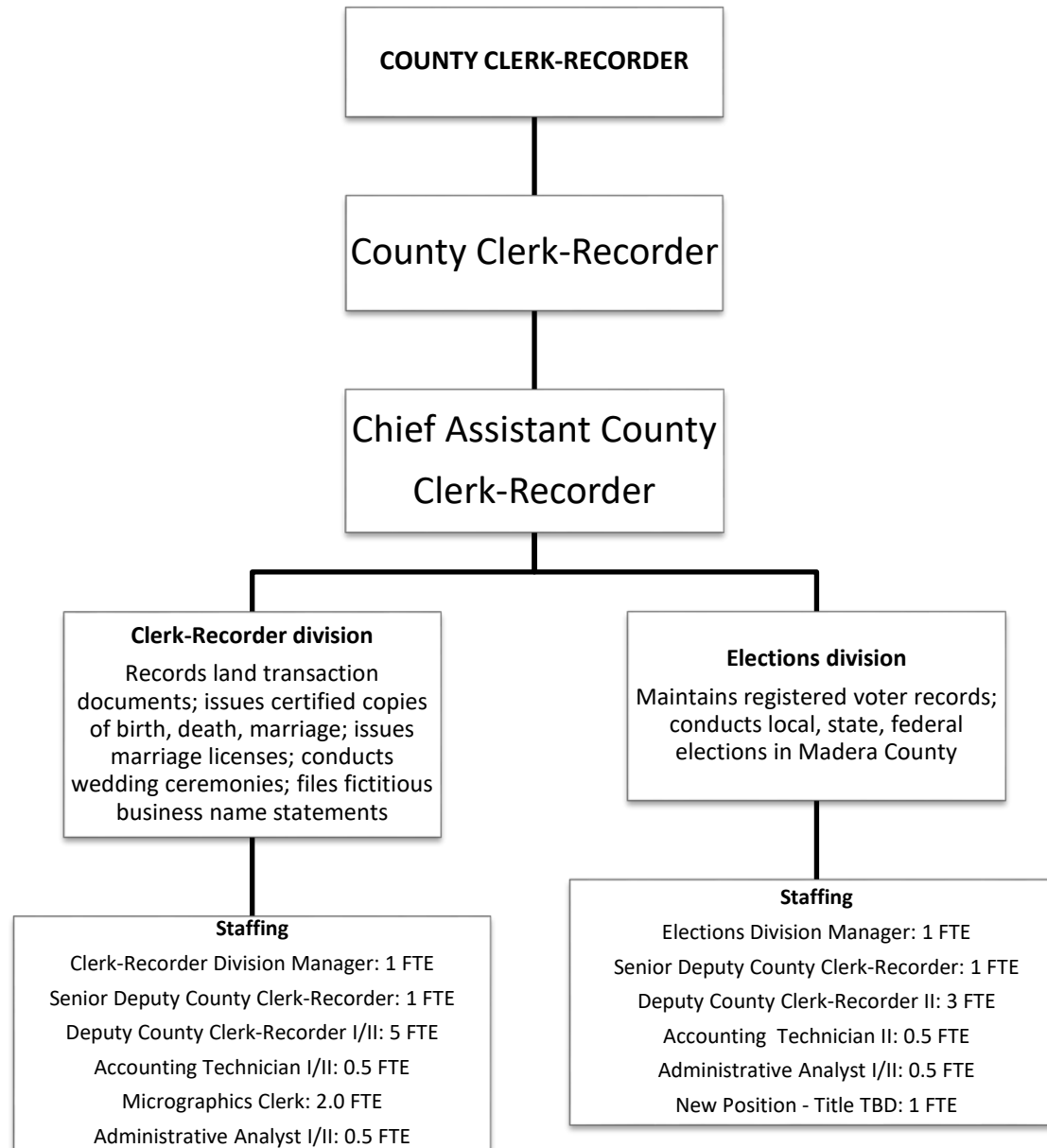
Total FTE: 47.5



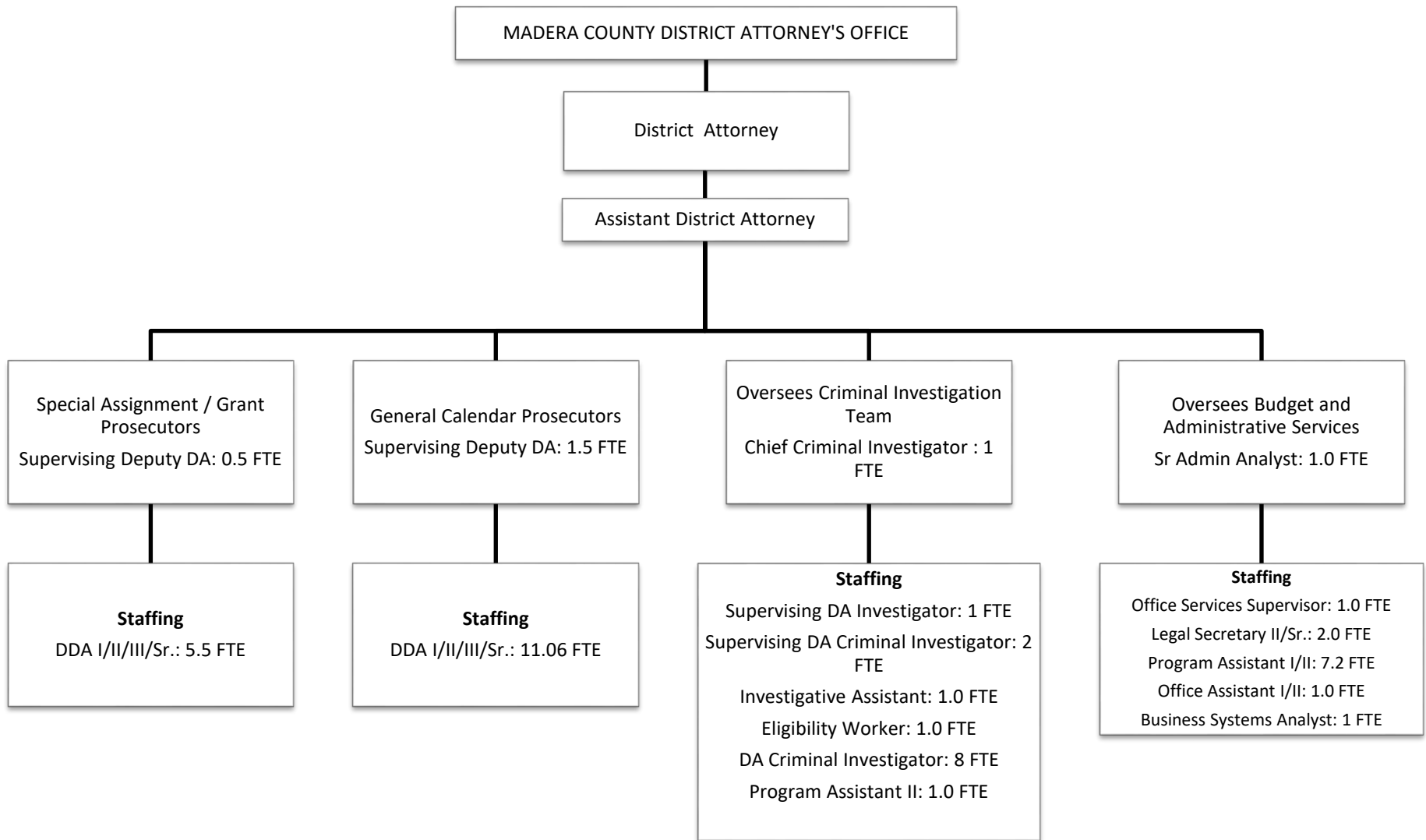
Total FTE: 35



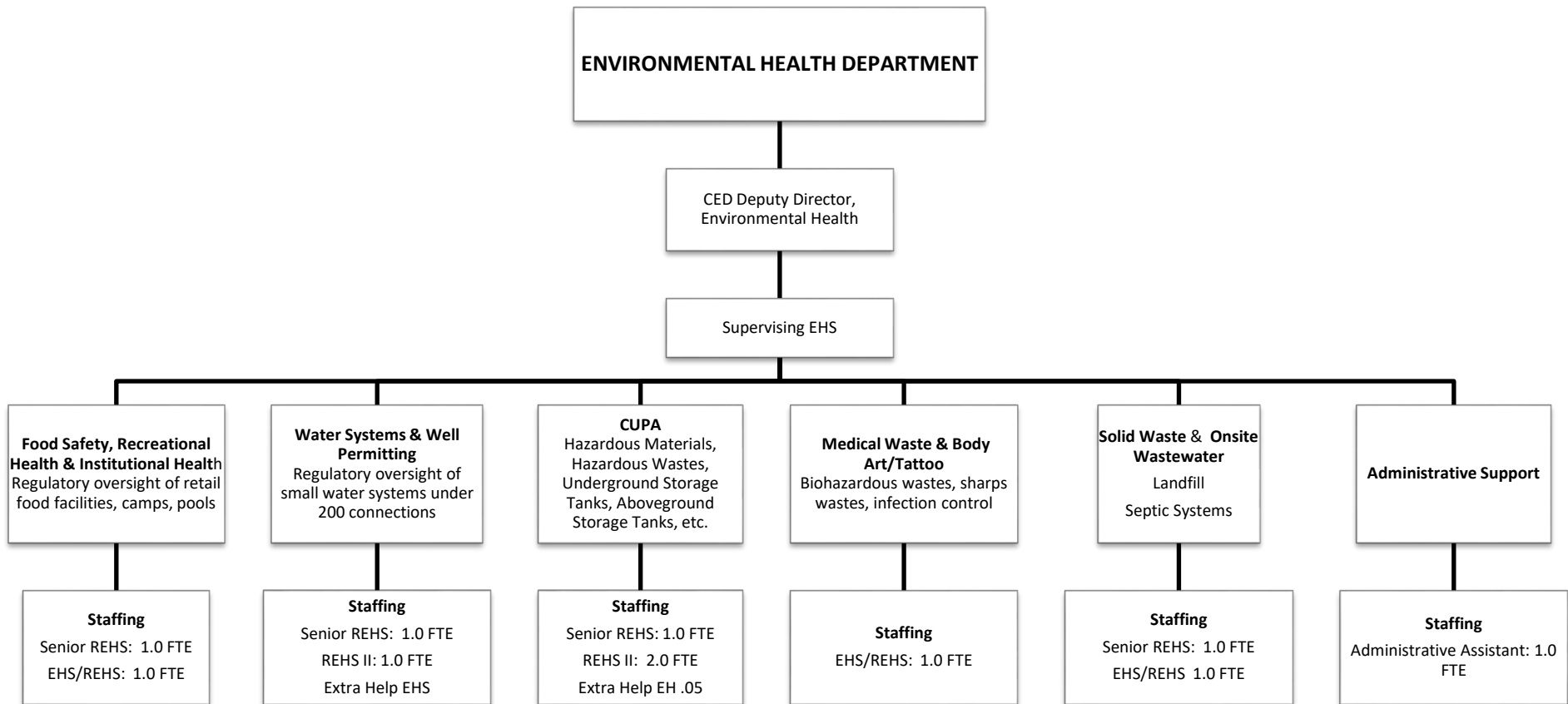
Total FTE: 122



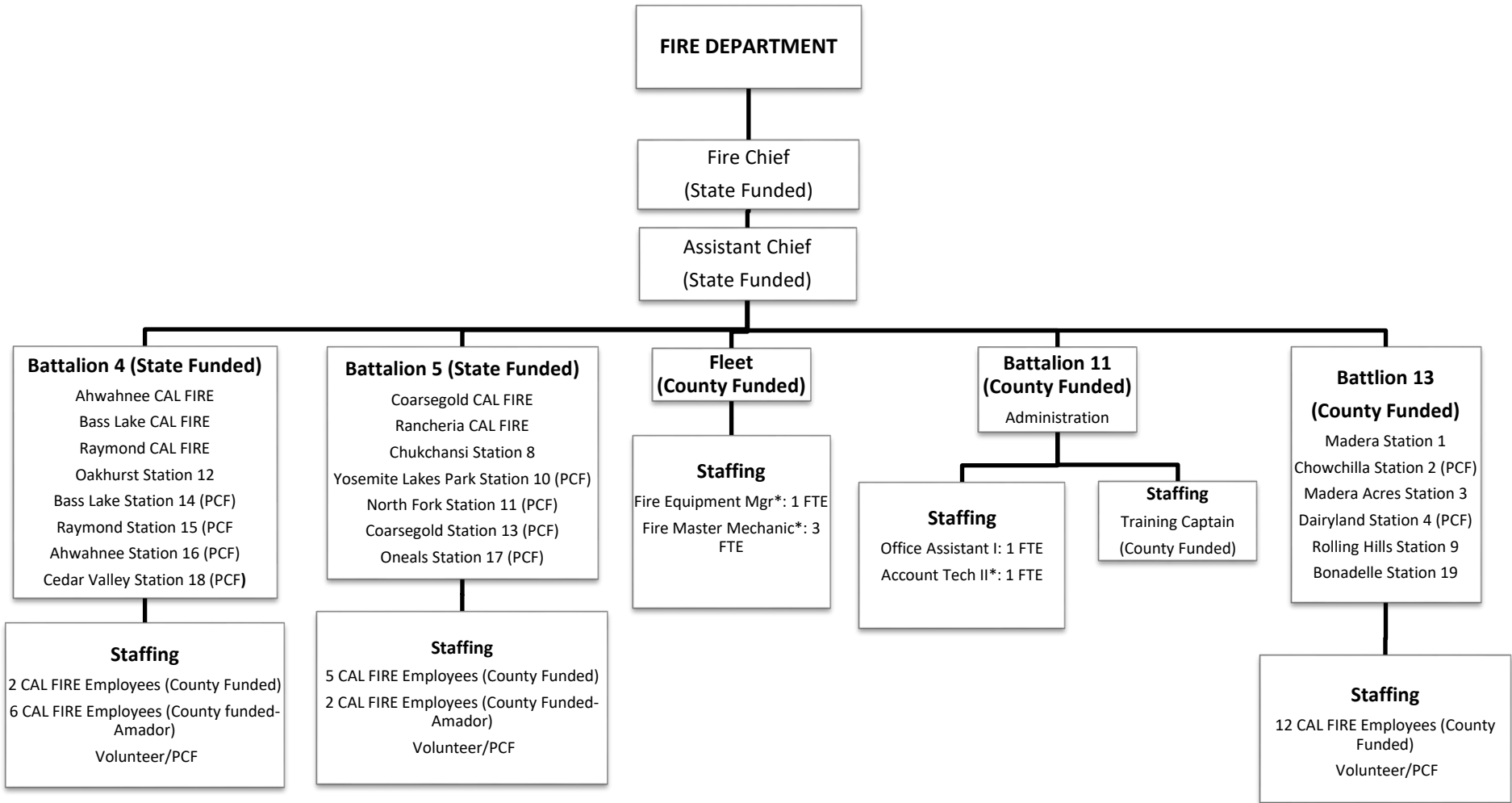
Total FTE: 18



Total FTE: 48.76



Total FTE 13.5



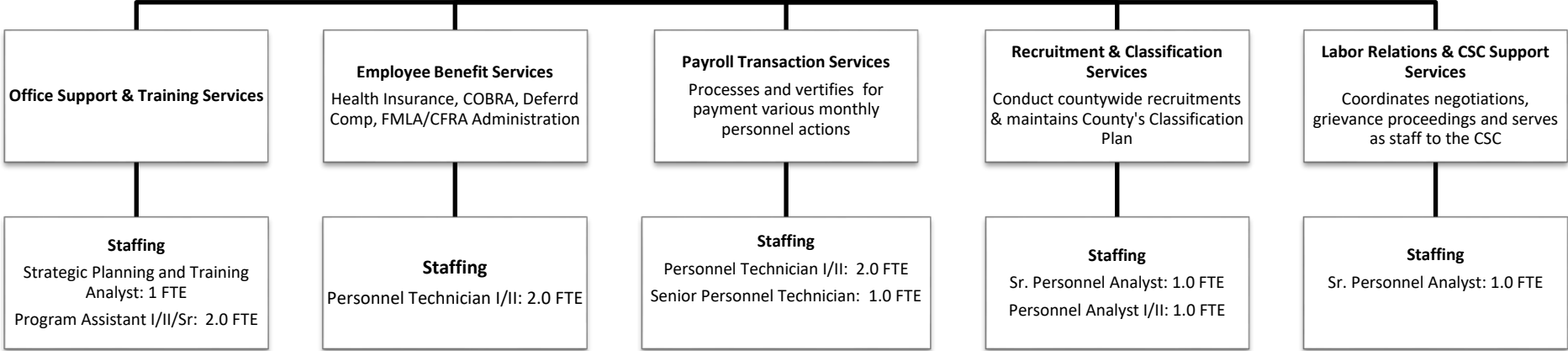
Total FTE: 5*

***Represents County Employees**

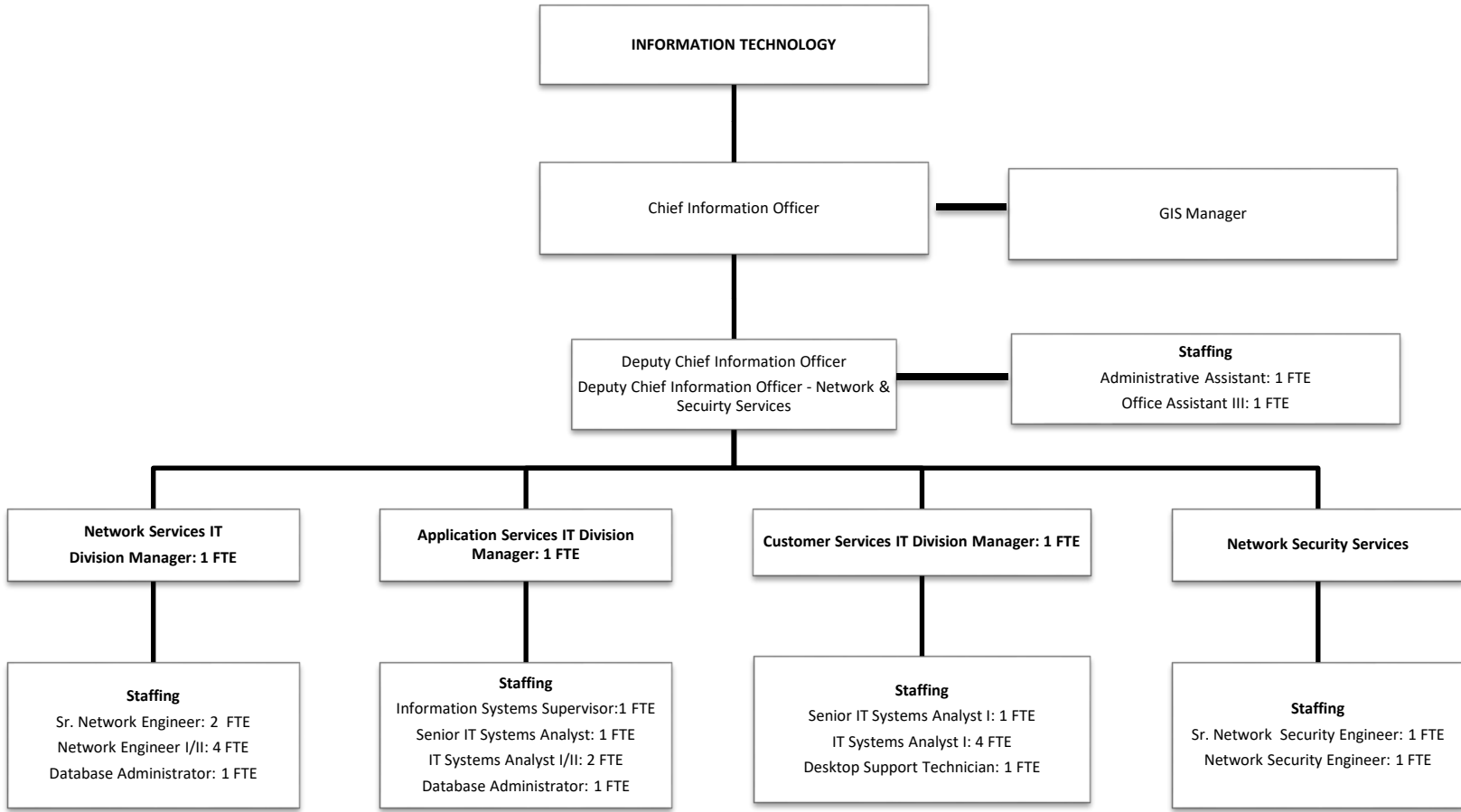
**HUMAN RESOURCES & OPERATIONS
DIVISION**

Deputy County Administrative
Officer - HR/Operations

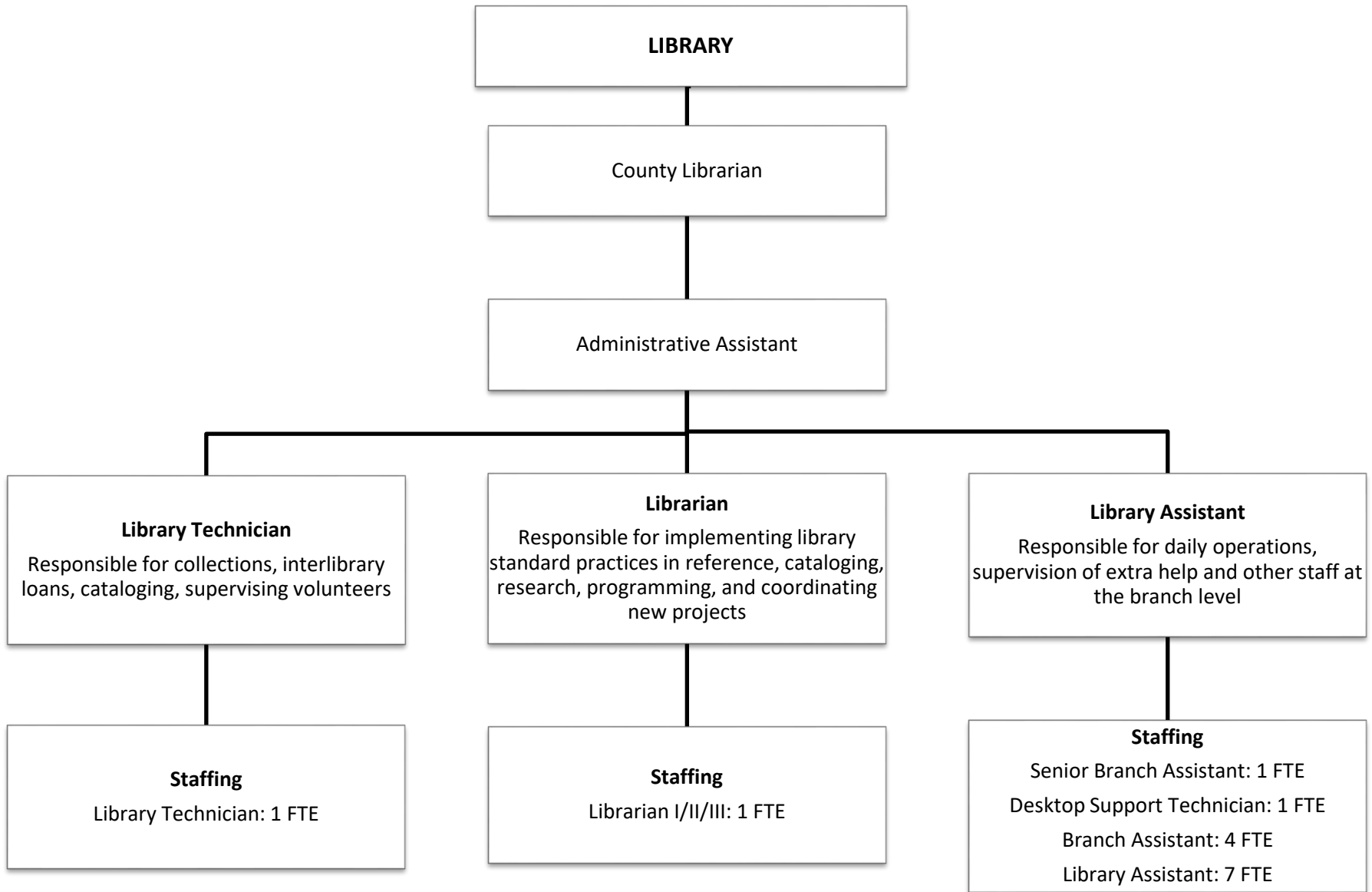
Assistant Director of Human
Resources/Operations



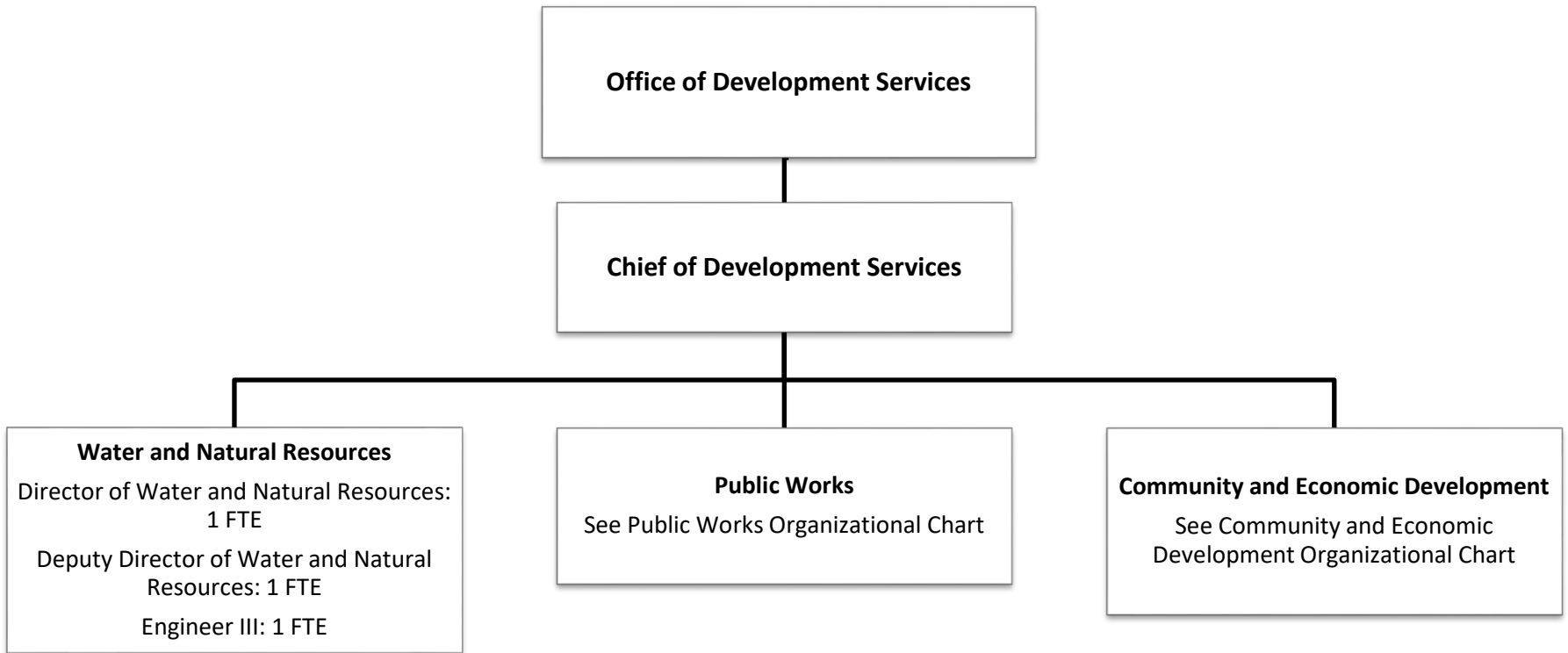
Total FTE: 13



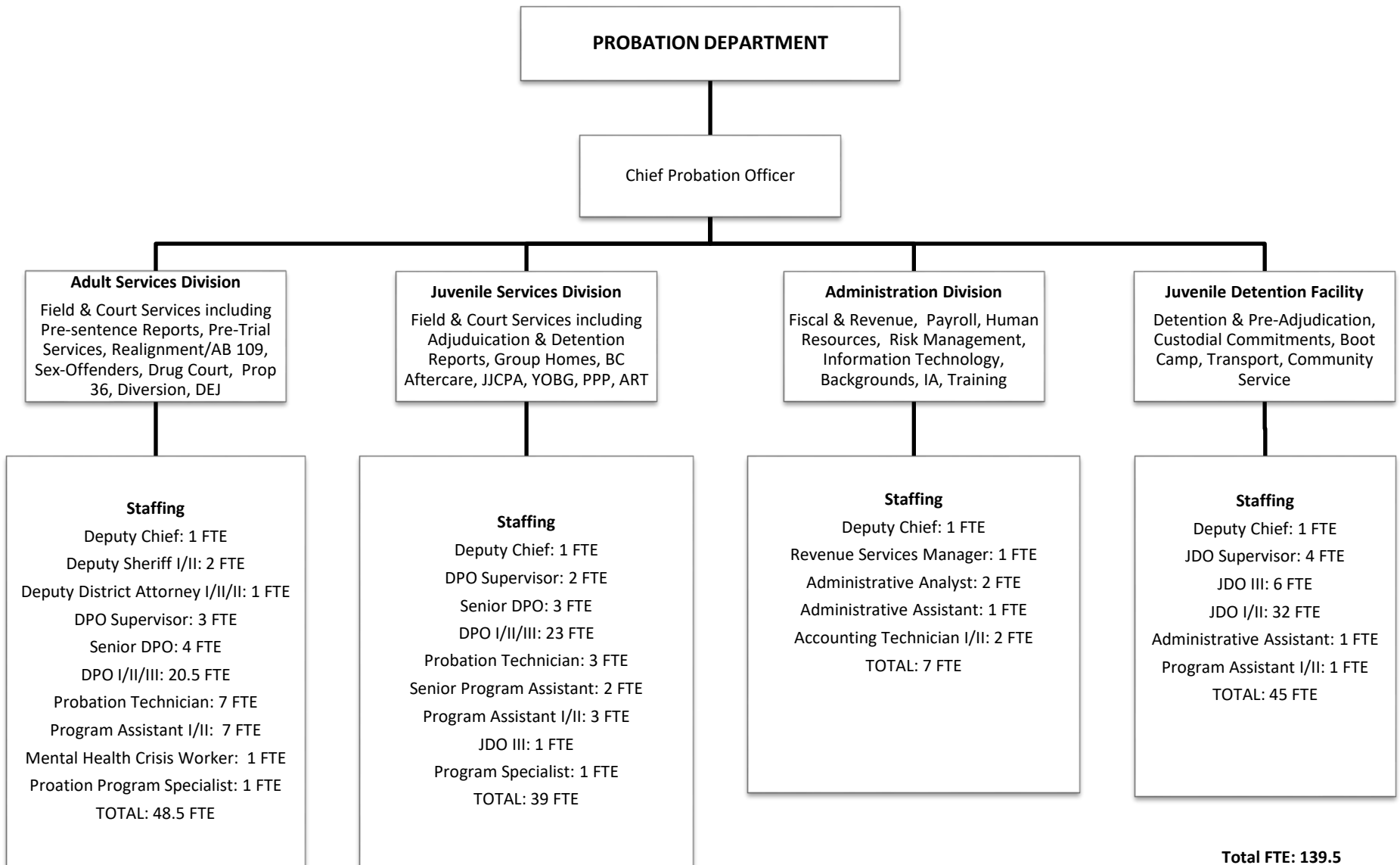
Total FTE: 29

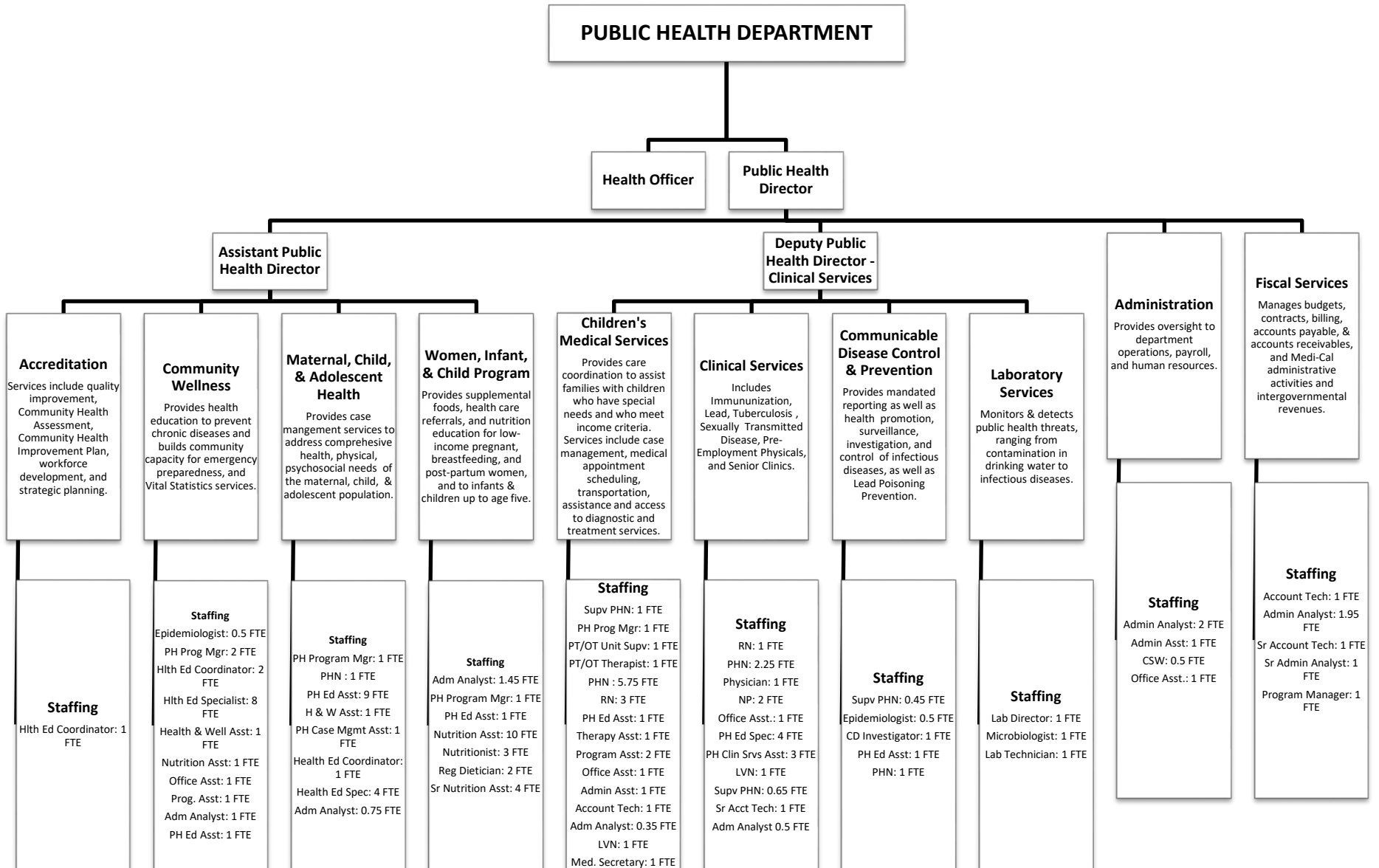


Total FTE: 17

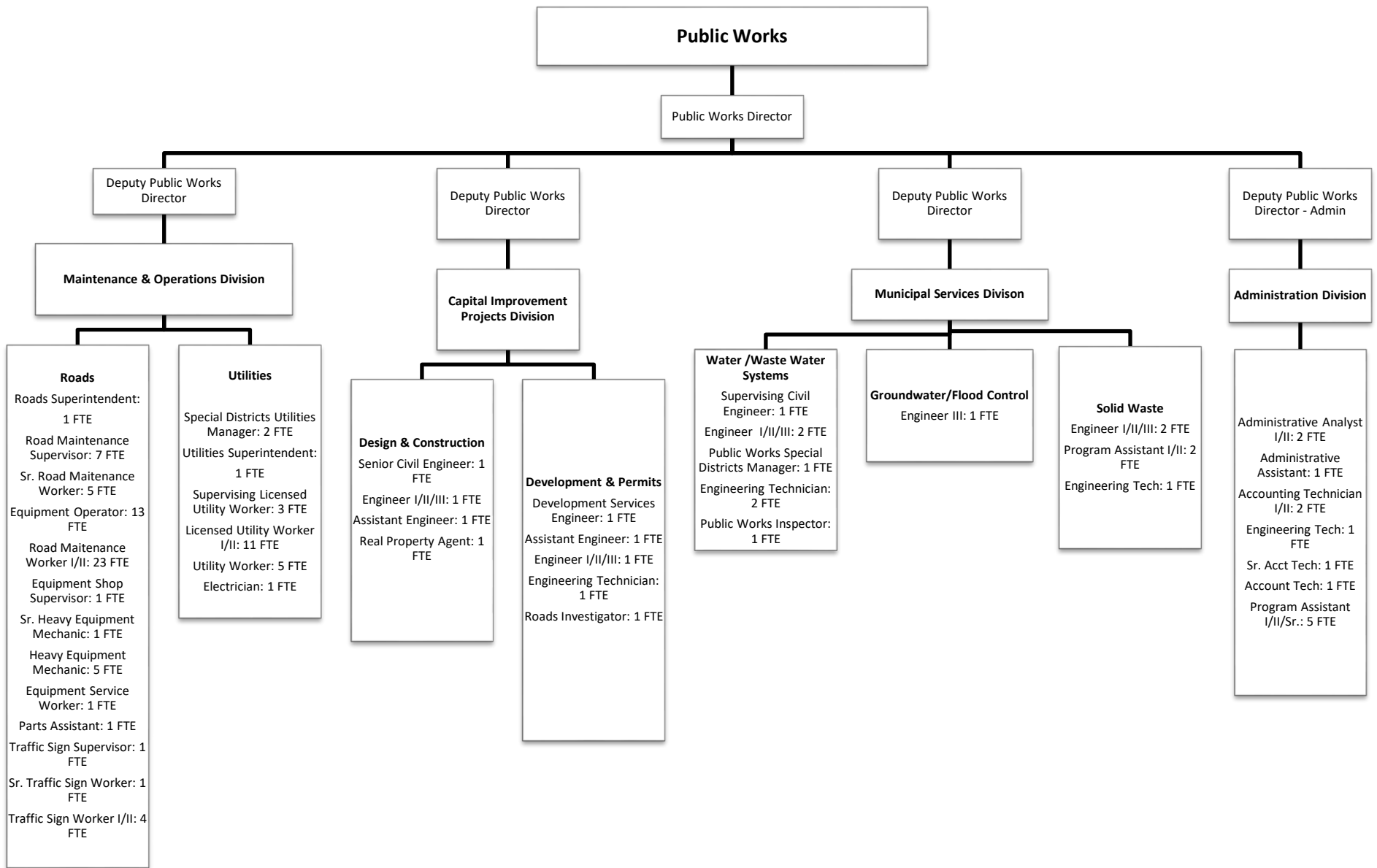


Total FTE: 17





Total FTE: 120.5



Total FTE: 127

Note: Total FTE includes staffing from Roads and Special Districts

SHERIFF-CORONER

Sheriff

Commander: 2 FTE

Internal Services Division

Conducts Background and Internal Affairs Investigations, Operates Laboratory, Secures Evidence, Manages Training Program.

Staffing

Lieutenant: 1 FTE
ID Specialist: 2 FTE
Property and Evidence Tech: 2 FTE

Patrol Division

Provides direct law enforcement services; patrols Bass Lake; provides search/rescue; enforces off-highway vehicle laws

Staffing

Sergeants: 11 FTE
Deputy Sheriff: 41 FTE
Corporal: 9 FTE

Administrative Services Division

Provides general services, budgeting; purchasing; grants management; CCW; statutory registration, Court Security Unit, Civil Unit, and Records Unit

Staffing

Lieutenant: 2 FTE
Sergeant: 1 FTE
Deputy Sheriff: 11 FTE
Corporal: 1 FTE
Sheriff Business Manager: 1 FTE
Chief Civil Deputy: 1 FTE
Administrative Analyst II/Sr: 1 FTE
Community Service Officer: 3 FTE
Admin Analyst II/Account Tech II: 1 FTE
Senior Program Assistant: 1 FTE
Program Assistant: 7 FTE
Administrative Assistant: 2 FTE
Supv Communication Dispatcher: 1 FTE
Communication Dispatchers: 9 FTE
IT Systems Analyst: 1 FTE

Investigations Division

Investigates crimes; provides targeted enforcement of narcotic laws; targeted investigations of Ag Crimes

Staffing

Sergeants: 1 FTE
Deputy Sheriff: 5 FTE
Sr Deputy Coroner: 1 FTE
Deputy Coroner: 2 FTE
Program Assistant: 2 FTE

Emergency Services Division

Provides advanced planning and management support during crisis operations; schedules training; ; provides dispatch services to all divisions.

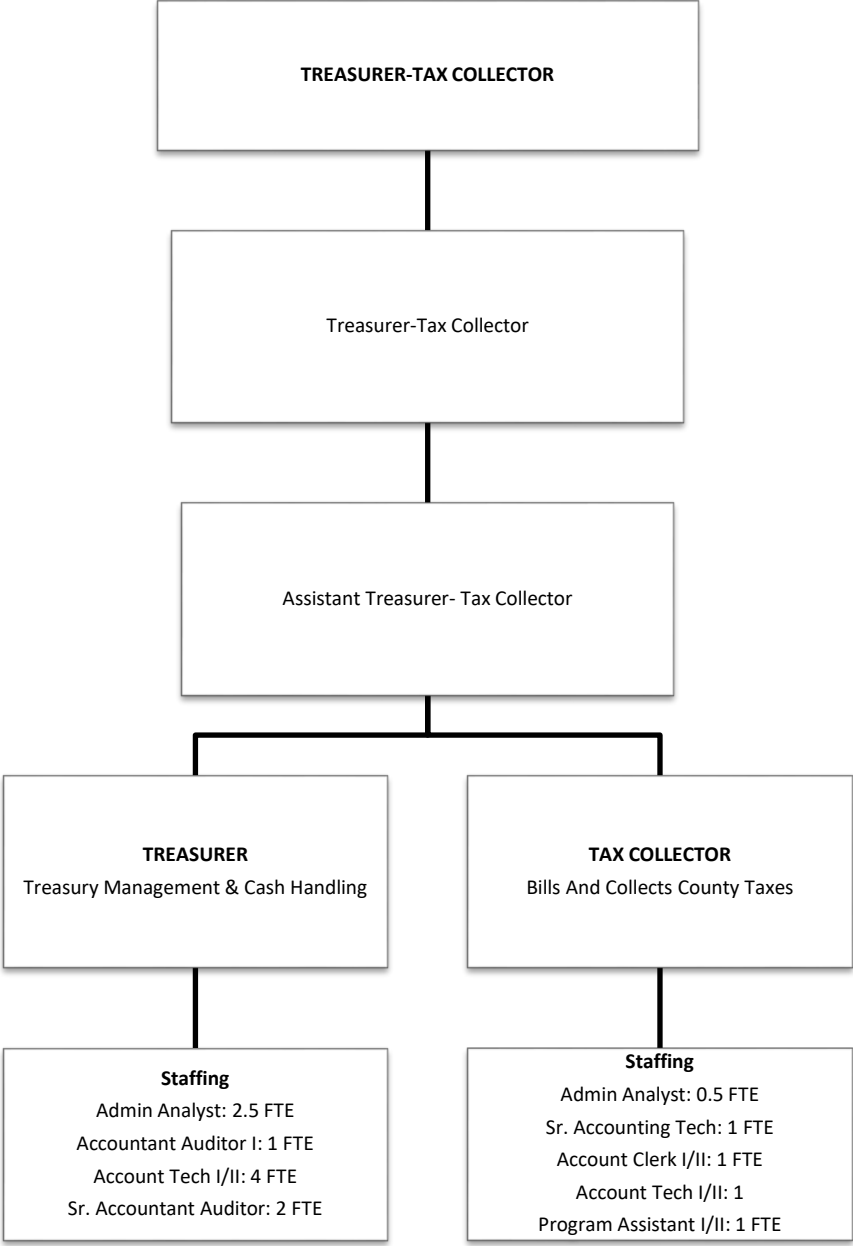
Staffing

Sergeant: 1 FTE
Community Service Officer: 1 FTE
Deputy Sheriff: 1 FTE
Sheriff Public Information Officer: 1 FTE
Emergency Services Coordinator: 1 FTE
Program Assistant: 1 FTE

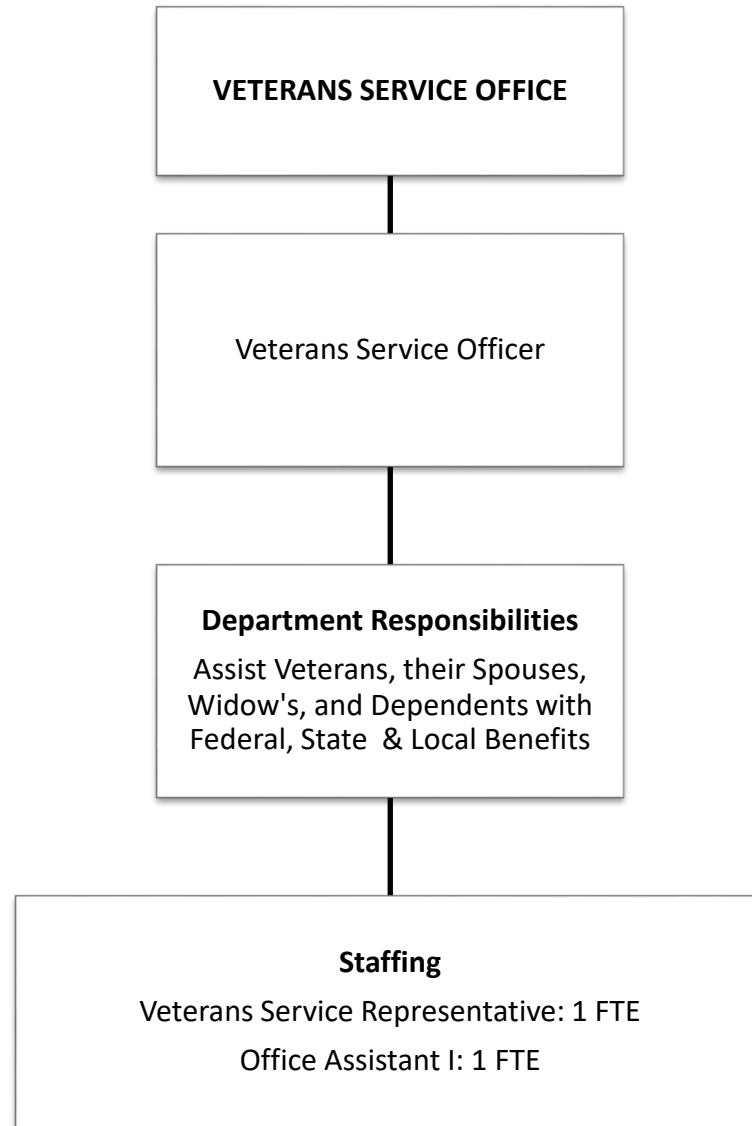
Total FTE: 129



Total FTE: 348



Total FTE: 16



Total FTE: 3