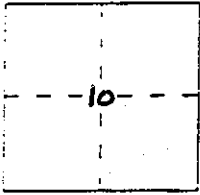


CORNER RECORD

Document Number _____

City of _____ County of Madera, California

Legal Description Parcel 3 of Parcel Map No. 718 per Book 19, Pg. 65 M.C.R.



T. 8 S.
R. 22 E.

CORNER TYPE

- Government Corner
- Meander
- Rancho
- Date of Survey May 30, 1991
- Control
- Property
- Other

COORDINATES
(Optional)

N. _____
 E. _____
 Zone _____ Datum _____
 Elev. _____

Corner — Left as found Found and tagged Established Reestablished Rebuilt

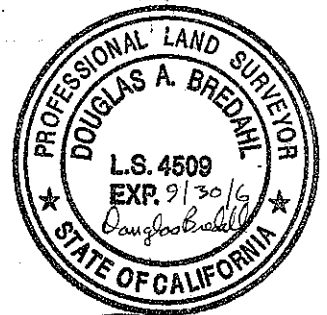
Identification and type of corner found: Evidence used to identify or procedure used to establish or reestablish the corner:
Found original monuments per sketch on pg. 2

A description of the physical condition of the monument as found and as set or reset:
Set PK nail in (original) chiseled x 2 per sketch on pg. 2

SURVEYOR'S STATEMENT

This Corner Record was prepared by me or under my direction in conformance with the Land Surveyors' Act on February 20, 2006

Signed Douglas Bredahl L.S. Number 4509



COUNTY SURVEYOR'S STATEMENT

This Corner Record was received February 22, 2006 and examined and filed February 22, 2006

Signed [Signature] Title County Surveyor

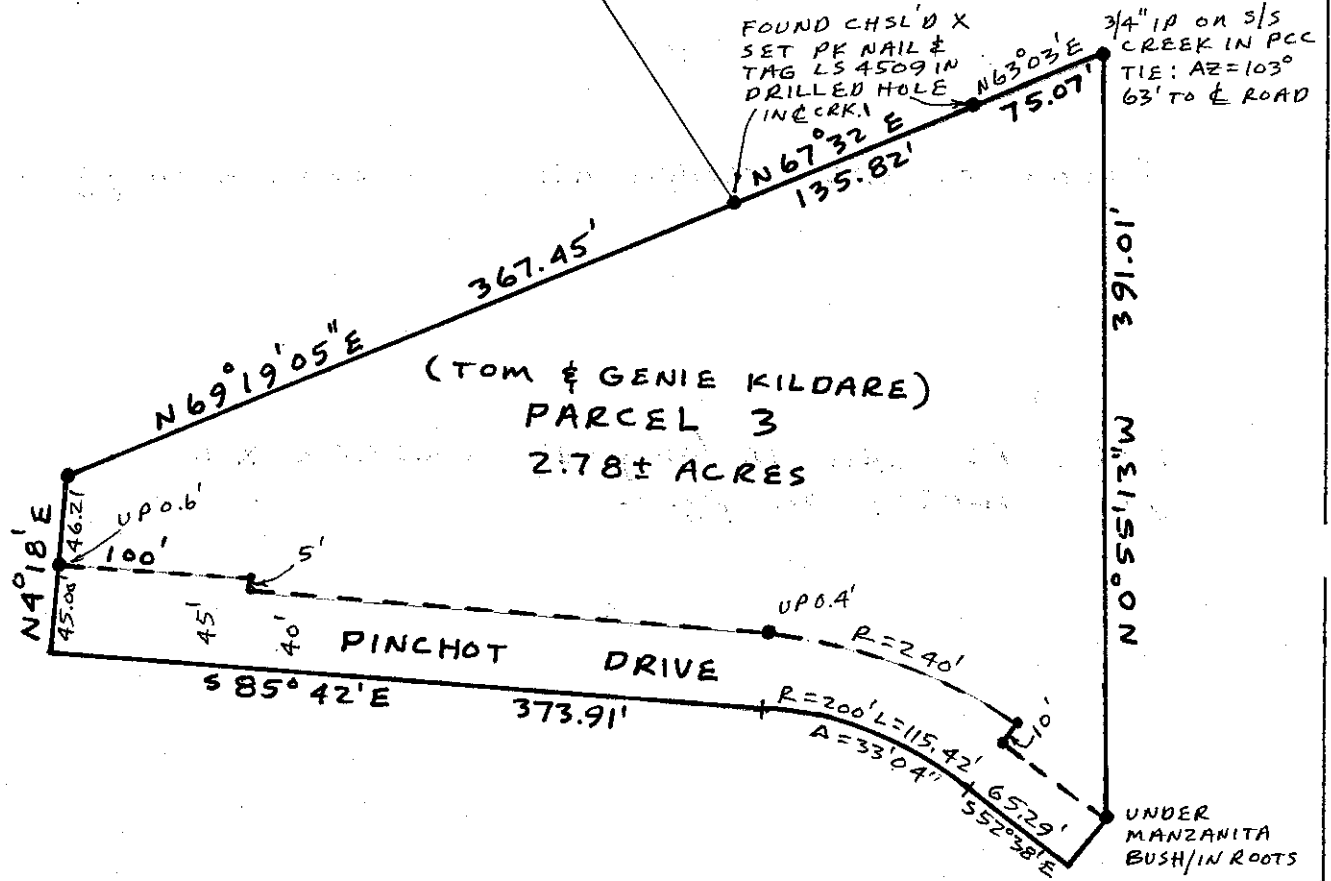


County Surveyor's Comment _____

NORTH



1"=100'



LEGEND

- MONUMENTS FOUND & ACCEPTED, 3/4" (ORIGINAL) I.P.R. TAGGED RCE 5982, OR AS NOTED

ALL DISTANCES ARE RECORD DISTANCES FROM PARCEL MAP NO. 718, 19/65 M.C.R.